

RECEIVED & FILED # L502  
 Oneida County Surveyor's Office  
 Date JUN 30 1968  
 By M  
 ACS Area #.....

FORM NO. 710

**PRESERVATION OF LANDMARKS**

PAGE \_\_\_\_\_

SECTION 59,635(7) WISCONSIN STATUTES

COUNTY Oneida

TOWN Minocqua

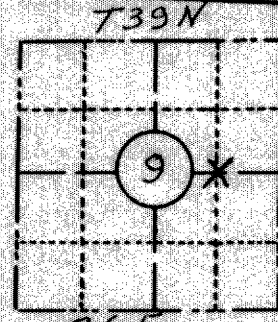
HIGHWAY 70

SECTION NO. 9

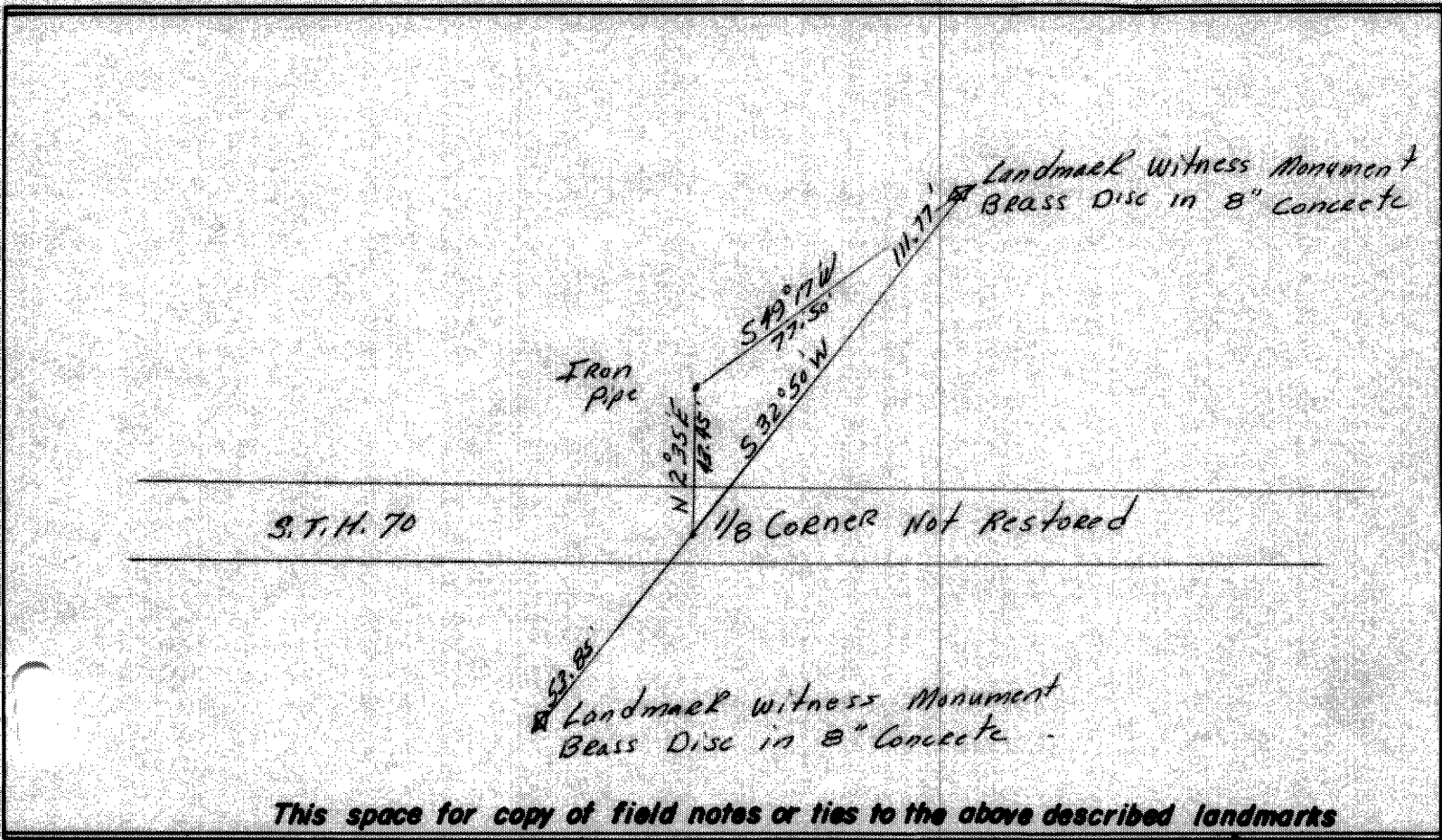
T 39 N., R 6 E.

TYPE OF LANDMARK Iron Pipe 1/8 CORNER

LOCATION INDICATED ON SKETCH X



LOCATION SKETCH



Field notes or records filed in book no. \_\_\_\_\_

at the \_\_\_\_\_ office.

City of \_\_\_\_\_ County.

Located or established by Duane L. Johnson, 1966

Title \_\_\_\_\_

County Clerk's Office Oneida County, Wis. } ss

Received for record OCT 28 1968, 19 \_\_\_\_\_

Copy sent to County Surveyor \_\_\_\_\_, 19 \_\_\_\_\_

T. J. Verage  
 County Clerk

OCT 28 1968