

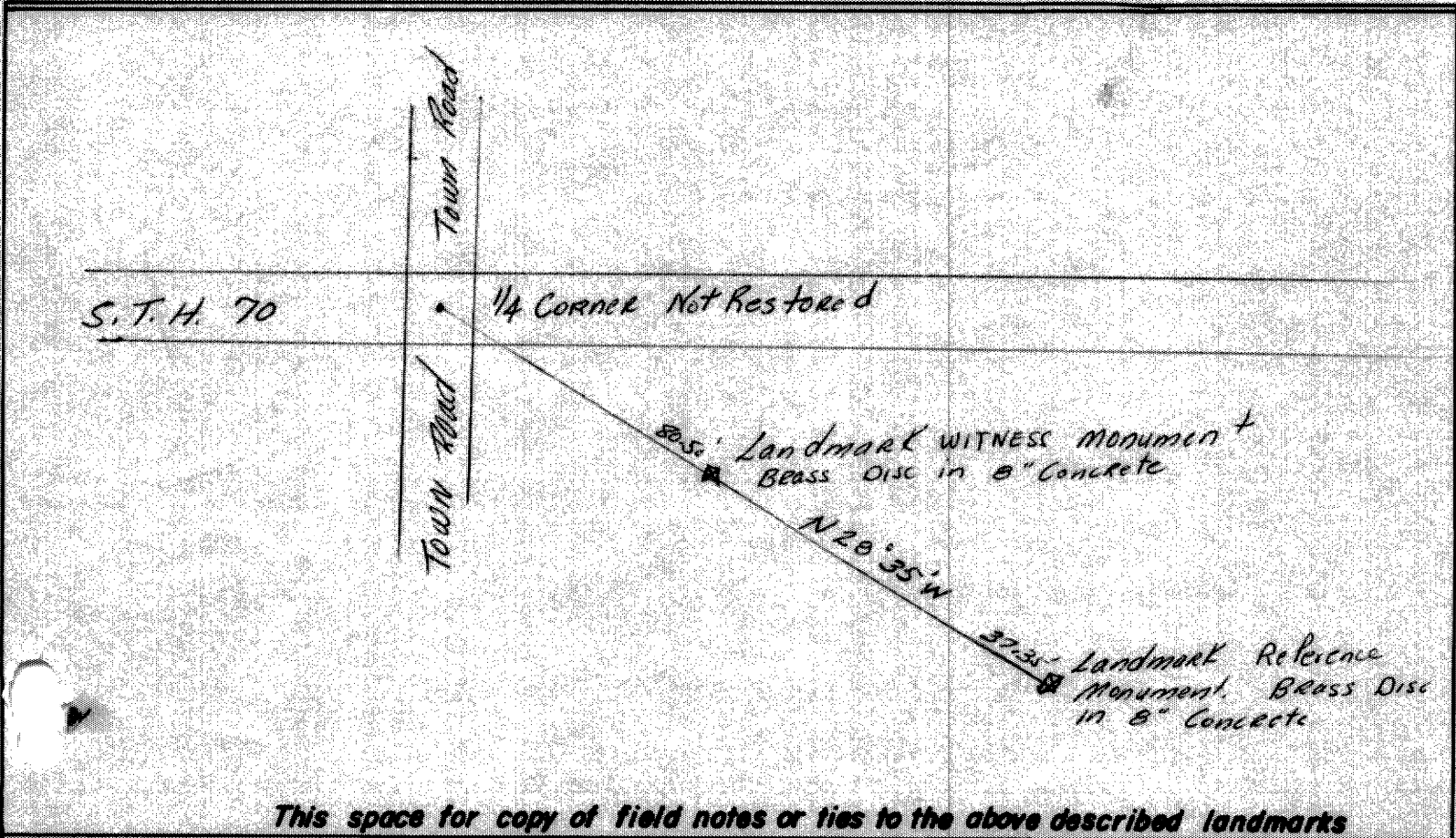
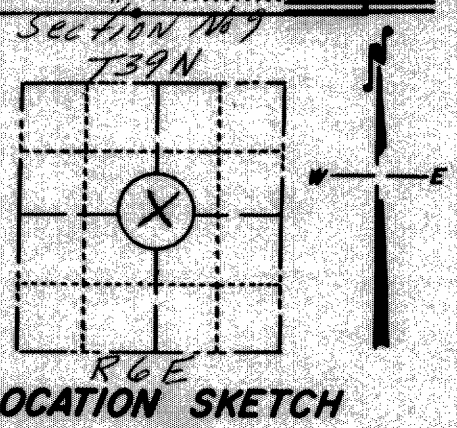
RECEIVED & FILED # 4503
Oneida County Surveyor's Office
Date JUN 30 1966

FORM NO. 710

PRESERVATION OF LANDMARKS

By LM
OCS Area # _____ PAGE _____

SECTION 59,635(7) WISCONSIN STATUTES
COUNTY Oneida
TOWN Minocqua
HIGHWAY 70
SECTION NO. 9
T. 7 N., R. 6 E.
TYPE OF LANDMARK _____
LOCATION INDICATED ON SKETCH X



This space for copy of field notes or ties to the above described landmarks

Field notes or records filed in book no. _____
at the _____ office.
City of _____ County.
Located or established by Duane L. Johnson, 1966
Title _____

County Clerk's Office _____ Oneida _____ County, Wis } ss
Received for record _____ OCT 28 1966 _____ 19 _____
Copy sent to County Surveyor _____ OCT 28 1966 _____ 19 _____
B. Verage
County Clerk

OCT 28 1966