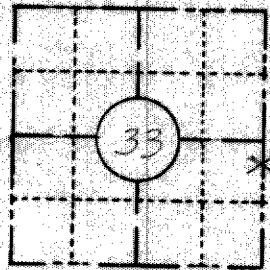


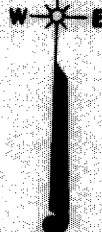
FIELD SURVEY NOTES  
**PRESERVATION OF LANDMARKS**  
 (Pursuant to Section 59.635(7) Wisconsin Statutes)

RECEIVED & FILED # **L505**  
 Wisconsin Department of Transportation  
 E-D-707-57  
 Oneida County Surveyor's Office  
 Date: **JUN. 30 1970**  
 By: **M**  
 OCS Area #.....

COUNTY <b>ONEIDA</b>		
TOWN <b>WOODRUFF</b>		
HIGHWAY <b>S.T.H. 47</b>		
SECTION <b>33</b>	TOWNSHIP <b>T39N</b>	RANGE <b>R7E</b>
TYPE OF LANDMARK <b>LOT CORNER</b>		

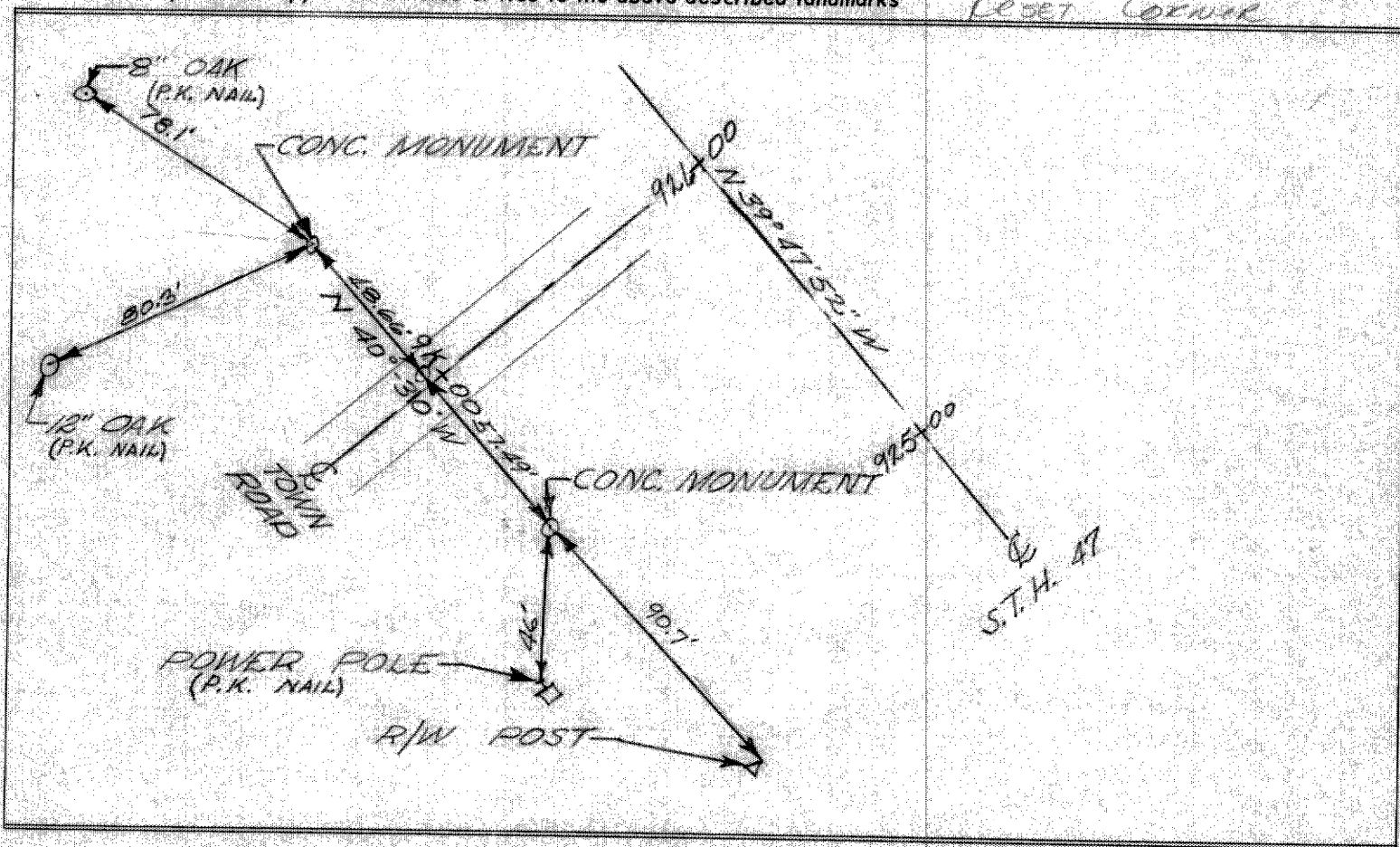


**LOCATION SKETCH**  
 (Location of landmark indicated by "x")



This space for copy of field notes or ties to the above described landmarks

*Reset Corner*



FILED UNDER PROJECT NUMBER <b>S02.81(B) ID 9051-1-70</b>			COUNTY CLERK'S OFFICE COUNTY OF <b>Oneida</b> WISCONSIN } ss	
SHC DISTRICT OFFICE NUMBER <b>1</b>	CITY <b>RHINELANDER</b>	COUNTY <b>ONEIDA</b>	DATE RECEIVED FOR RECORD <b>December 15, 1970</b>	DATE COPY SENT TO COUNTY SURVEYOR <b>December 22, 1970</b>
LOCATED OR ESTABLISHED BY NAME <b>JAMES F. VOBORSKY</b>			SIGNATURE OF COUNTY CLERK <b>Elmer Jandack</b>	
TITLE <b>PROJECT ENGINEER</b> DATE <b>9-69</b>				