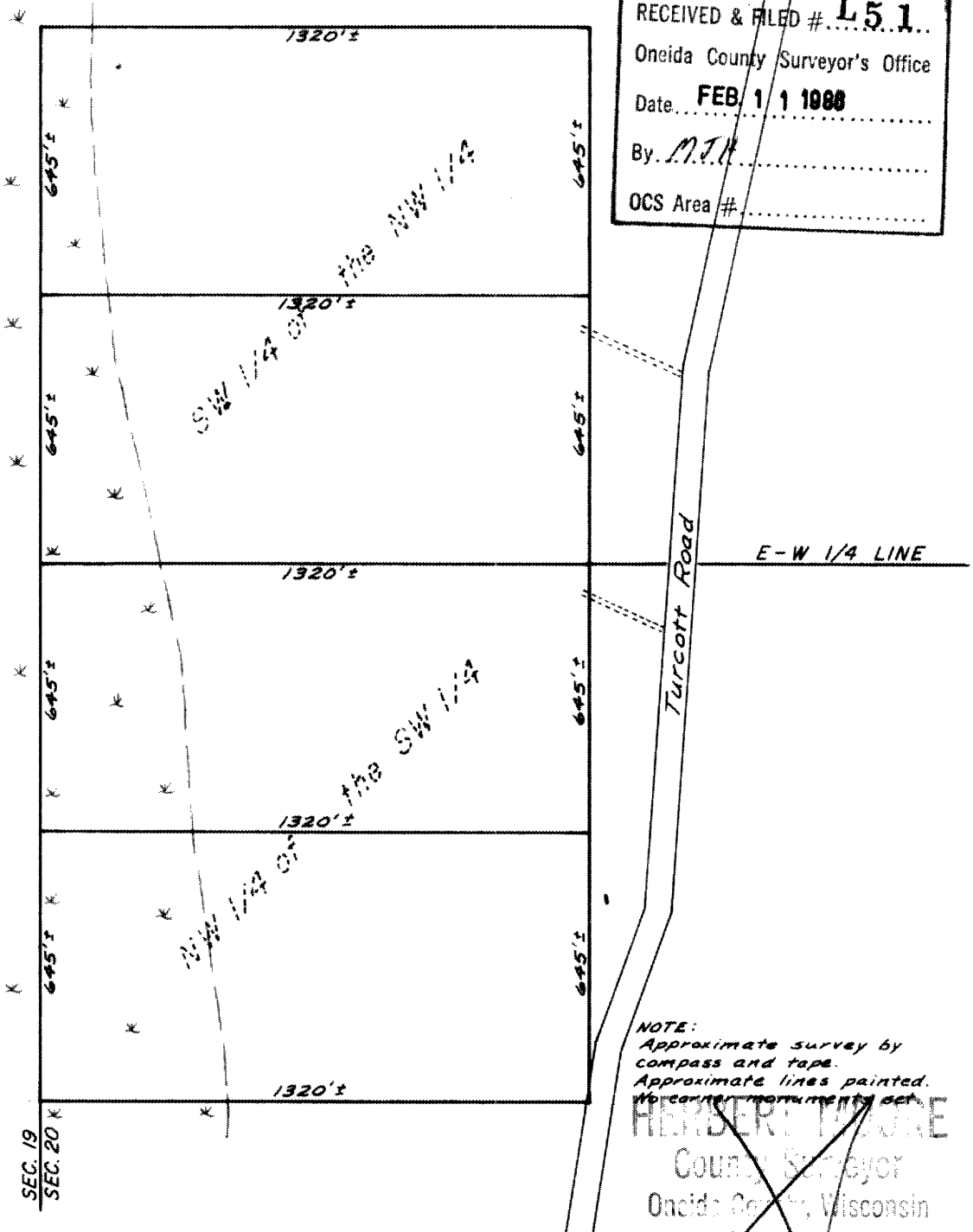


RECEIVED & FILED # **L5.1**  
 Oneida County Surveyor's Office  
 Date **FEB 11 1988**  
 By **MJM**  
 OCS Area #



NOTE:  
 Approximate survey by  
 compass and tape.  
 Approximate lines painted.  
 No corner monuments set

~~HERBERT MOORE~~  
 County Surveyor  
 Oneida County, Wisconsin  
 Courthouse  
 Rhinelander, Wisconsin 54501

The  
**SW 1/4 of the NW 1/4**  
 and the  
**NW 1/4 of the SW 1/4**  
**SECTION 20, T37N, R4E**  
 Oneida County, Wis.

SEP 15 1972  
 288

L 51

Scale 1" = 400'

June, 1972

Northwoods Surveyors Inc.

Land Surveyor

R 8 E, Oneida County, Wisconsin more particularly described as follows:

Beginning at the Meander Corner ( iron pipe ) on the South shore of the Wisconsin River Flowage and the East line of said section 15, also being the Northwest corner of Lot No. 1 of Barlow's Subdivision in section 14; thence N 60°-51' W, along the shore 145.00 ft. to an Iron Pipe; thence S 32°-21' W, 196.40 ft. to an iron pipe; thence S 60°-51' E, 271.90 ft. to an iron pipe; thence N 40°-03' W, 132.90 ft. to an iron pipe; thence N 32°-21' E, 149.10 ft. to the POINT OF BEGINNING.

Also included are lands between the above described shore line and the actual shore line of the Wisconsin River Flowage.

Subject to all existing easements and Flowage rights.

~~HERBERT MOORE~~  
 County Surveyor  
 Oneida County, Wisconsin