

Part of
 SW 1/4 of the NW 1/4
 SECTION 8, T 39N, R 6 E
 Oneida County, Wis.

RECEIVED & FILED #	
Oneida County Surveyor's Office	
DATE	SEP 12 1988
BY	
DOS Area #	

1521

1" = 60'

er, 1962

February, 1963



Northwoods Surveyors

J. Fisher
 LAND SURVEYOR

J Fisher

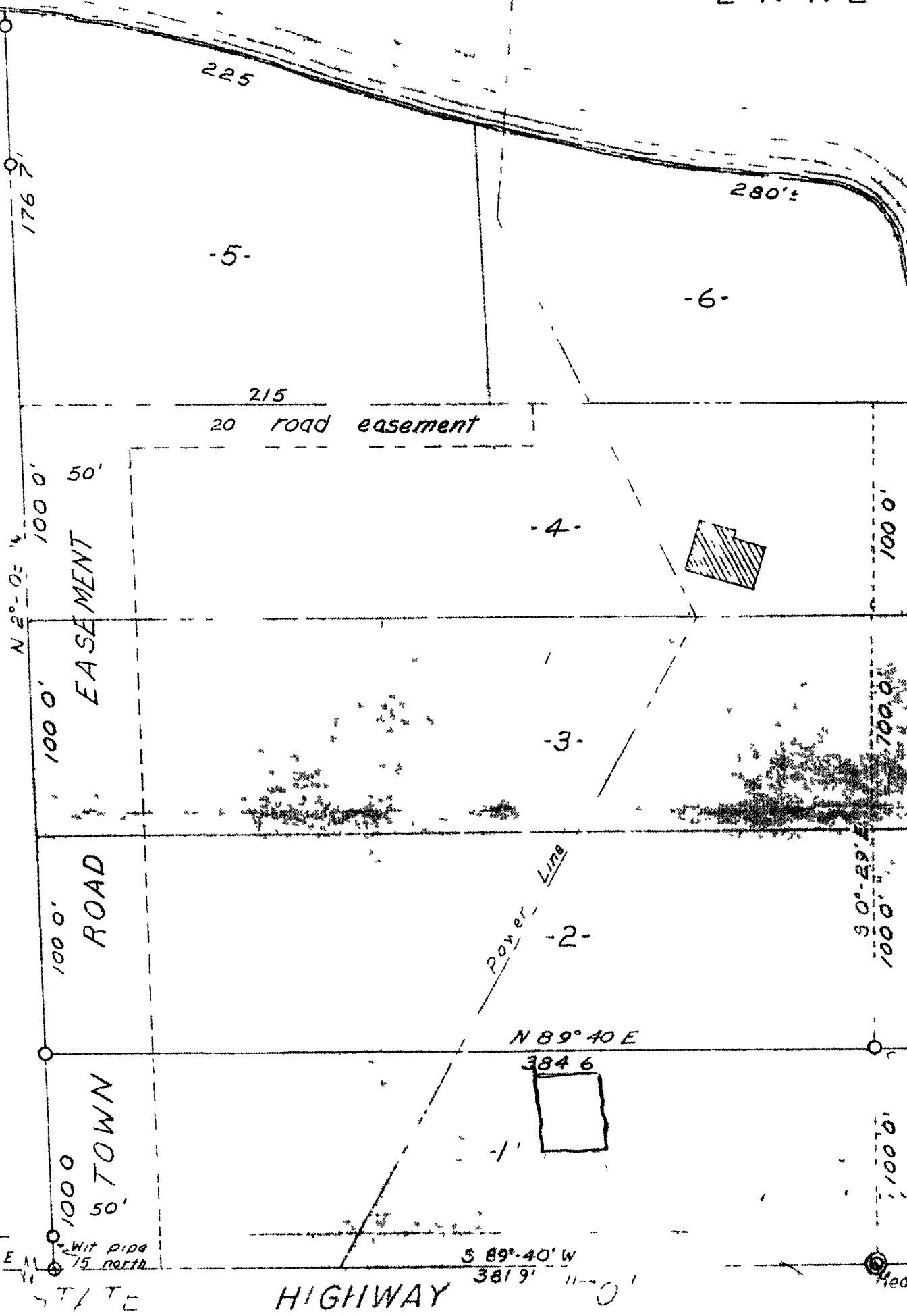
1521

1521

CURTIS

LAKE

Witness pipe
650 South
on line



dec c° E

225

280'

-5-

-6-

215

20 road easement

50'
EASEMENT

-4-

-3-

-2-

N 89° 40' E

384.6

Power Line

-1-

S 89° 40' W
381.9'

HIGHWAY

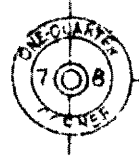
ROAD

TOWN

Witness pipe
75 North

16° W Pipe
S 27° W, 210.3

2 - N File
N 75° E 20.3



Part of

SW 1/4 of the NW 1/4

CURTIS

L A K E

Witness pile
650 South
on line

dec C'E

176 0'

N 2° 02' 1/4

100 0'

100 0'

EASEMENT

50

225

-5-

215

20 road easement

-4-

-6-

280'

-3-

100 0'

100 0'

