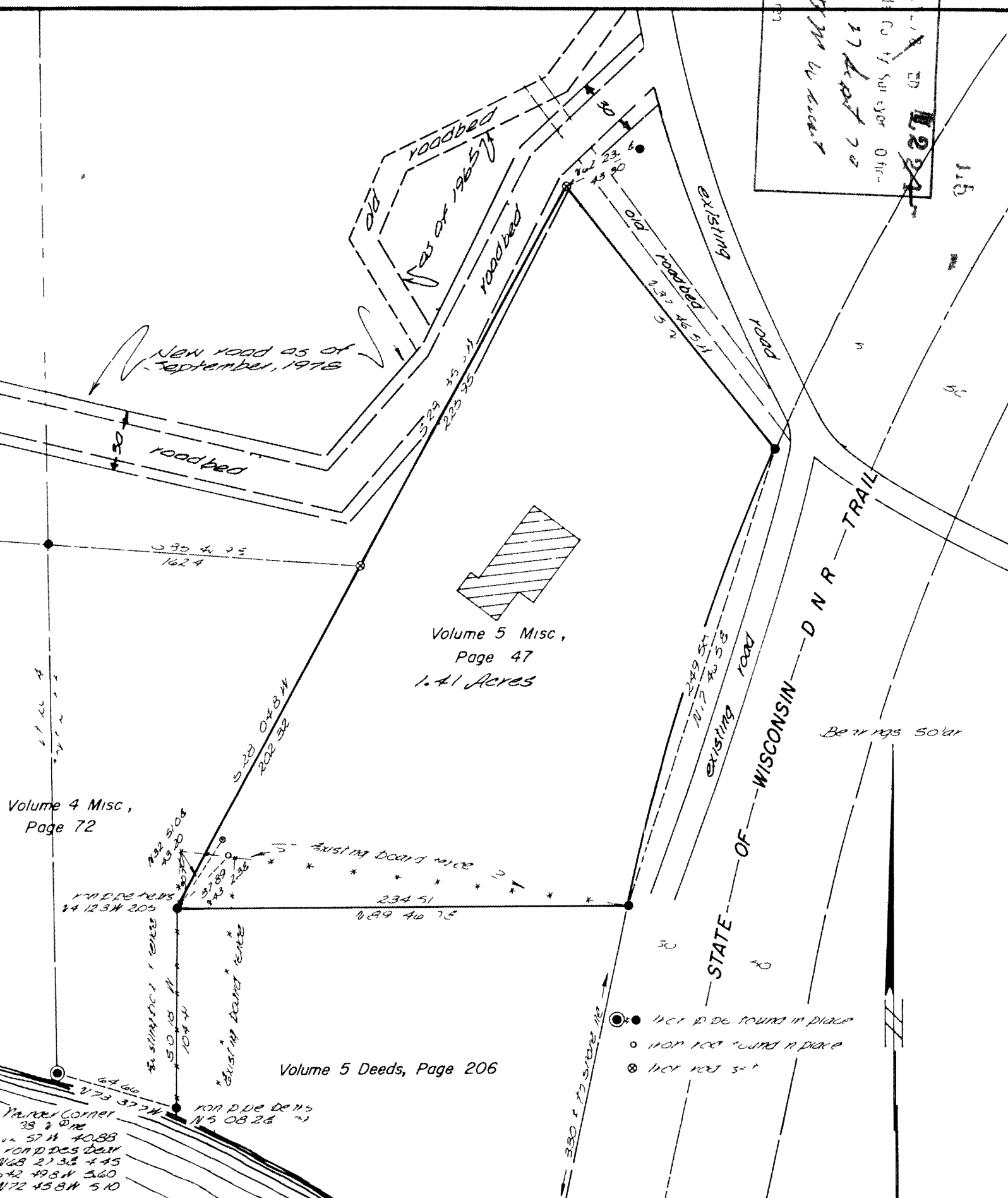


L. J. Fisher  
 (I.D. Co. / Surveyor 0 hr)  
 L. J. Fisher  
 by G. W. Fisher



Volume 4 Misc, Page 72

Volume 5 Misc,  
 Page 47  
 1.41 Acres

Volume 5 Deeds, Page 206

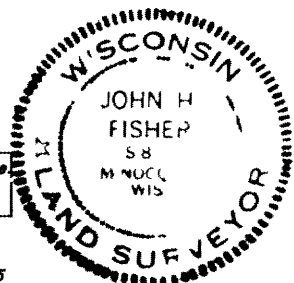
64 610  
 173 372 W  
 Yarker Corner  
 38 2 0 W  
 57 N 40 88  
 108 D 255 02 W  
 468 27 35 4 45  
 542 49 8 N 5 60  
 172 45 8 N 5 10

- 1/4" P.D.E. FOUND IN PLACE
- 1/4" P.D.E. FOUND IN PLACE
- ⊗ 1/4" P.D.E. FOUND IN PLACE

Part of  
**GOV'T LOT 5**  
**SECTION 15, T39N, R6E**  
 Minocqua Township, Oneida County, Wis

KAWAGUESAGA  
 LAKE

RECEIVED & FILED  
 Oneida County / Surveyor's Office  
**SEP 12 1980**  
 D. J. Fisher



Scale 1"=50'  
 Photographically reduced Do not scale  
 Approximate scale 1 = 63

Northwoods Surveyors Inc  
*John H. Fisher*  
 Land Surveyor

October, 1974  
 Revised Sept 18 1978 to show 1965  
 and 1978 road locations by Gerald B  
 Inman

Drafted by James D Reim