

RECEIVED & FILED # 15364
 Oneida County Surveyor's Office
 Date SEP. 12 1988
 By: M.A.R.
 OCS Area #

RECEIVED & FILED # 15364
 Oneida County Surveyor's Office
 Date 13 Dec 77
 By: D. M. Alward
 OCS Area #

LOCATION OF
 CABIN →

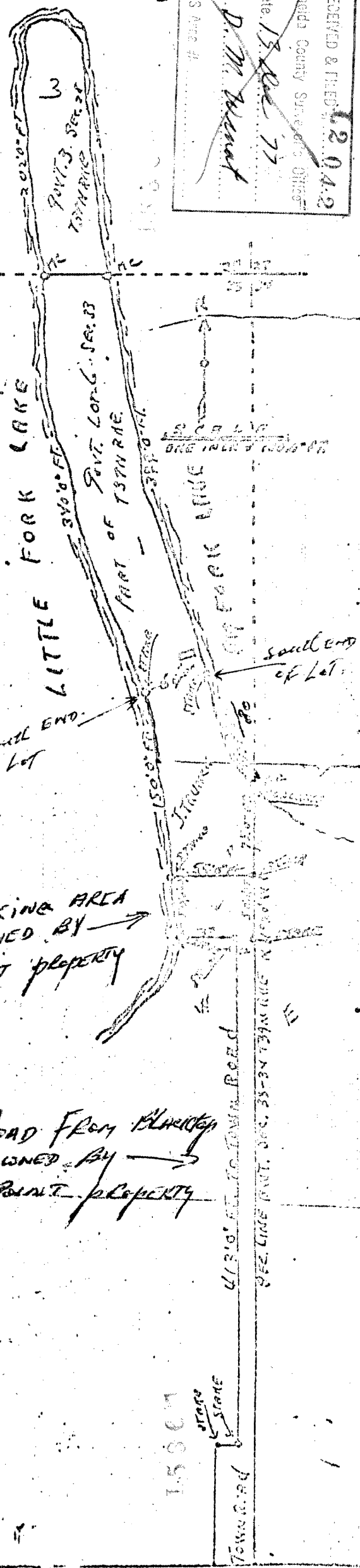
PARCELS OF LAND LOCATED IN AND PART OF
 GOVT. LOT 6 - SEC. 33, T39N R1E, ONEIDA COUNTY, WIS.
 AS SHOWN ON THE ATTACHED MAP IS A TRUE
 REPRESENTATION OF THE LAND MAPPED AND
 SURVEYED BY

A.D. Lytle
 ONEIDA COUNTY SURVEYOR

McAELLY
 GOVT 3
 SEC 28
 GOVT 6
 SEC 33

PARKING AREA
 OWNED BY →
 POINT PROPERTY

ROAD FROM Blundell
 OWNED BY →
 POINT PROPERTY



15364

15364