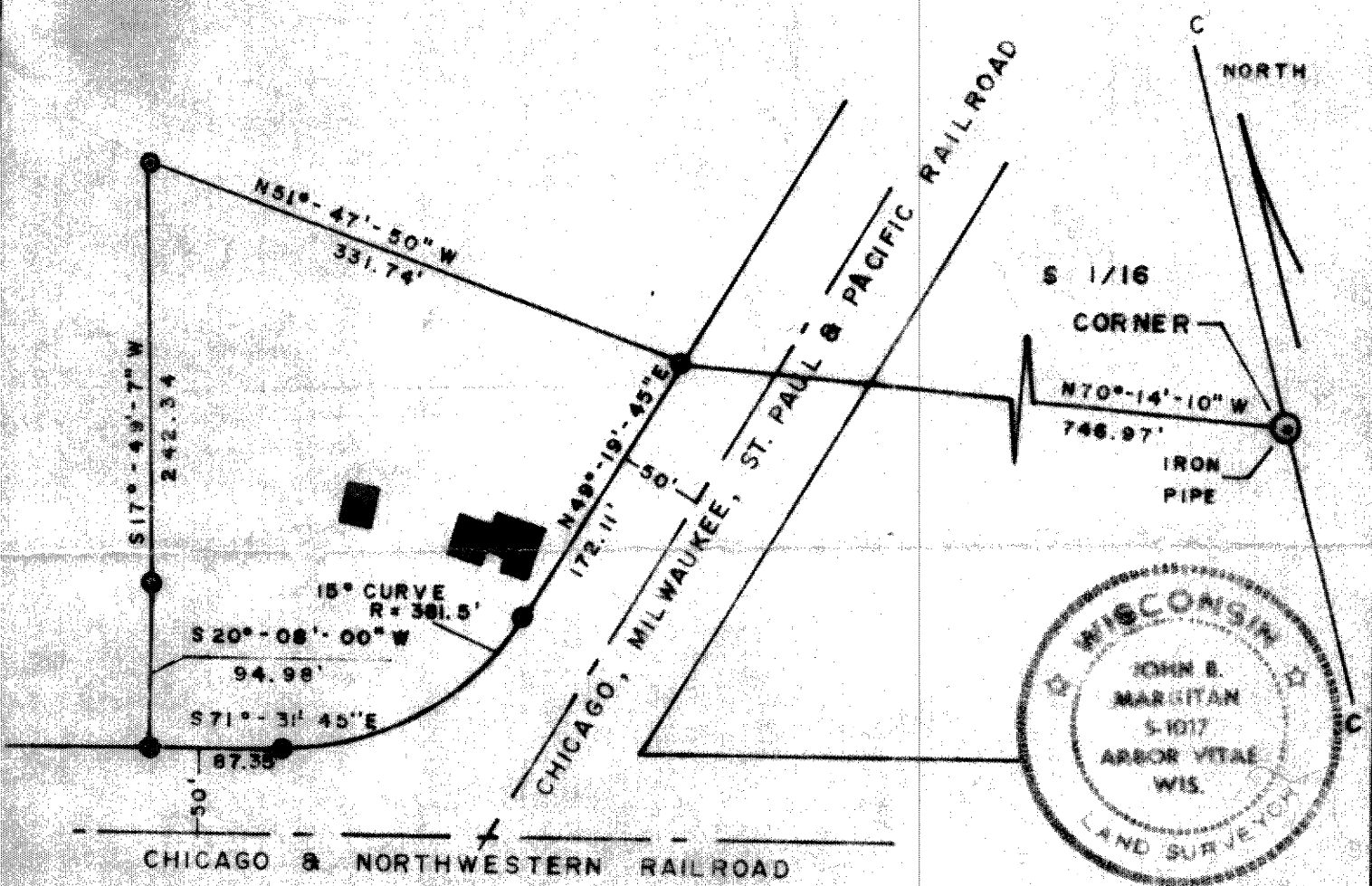


RECEIVED & FILED # L55
 Oneida County Surveyor's Office
 Date..... FEB. 1. 1. 1988
 By: MTH

PART OF THE
 NE 1/4 of S 1/4
 SECTION 1, T39N, R6E
 ONEIDA COUNTY, WISCONSIN

MAY 27 1988
 HERBERT MOORE
 County Surveyor
 Oneida County, Wisconsin
 Courthouse
 Rhinelander, Wisconsin 54501



SCALE 1" = 100'
 MAY 1972
 BEARINGS SOLAR
 ● IRON ROD 1-7/8" X 30"

VOYAGEUR LAND SURVEYS
 John B. Margitan
 JOHN B. MARGITAN
 LAND SURVEYOR

DWG NO. 11-72