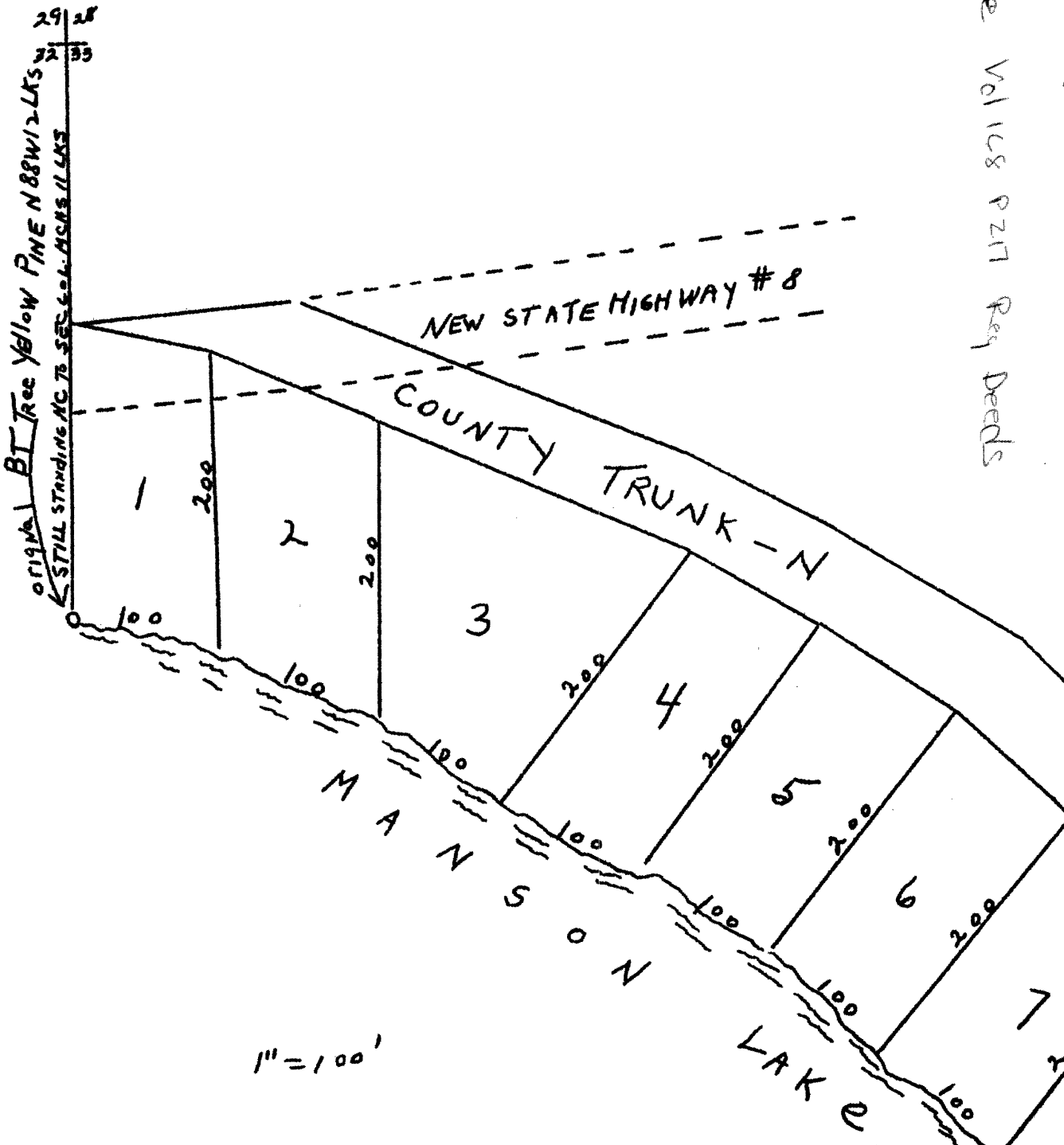


1555

168-217 & See Vol 168 p 217 Reg Deeds



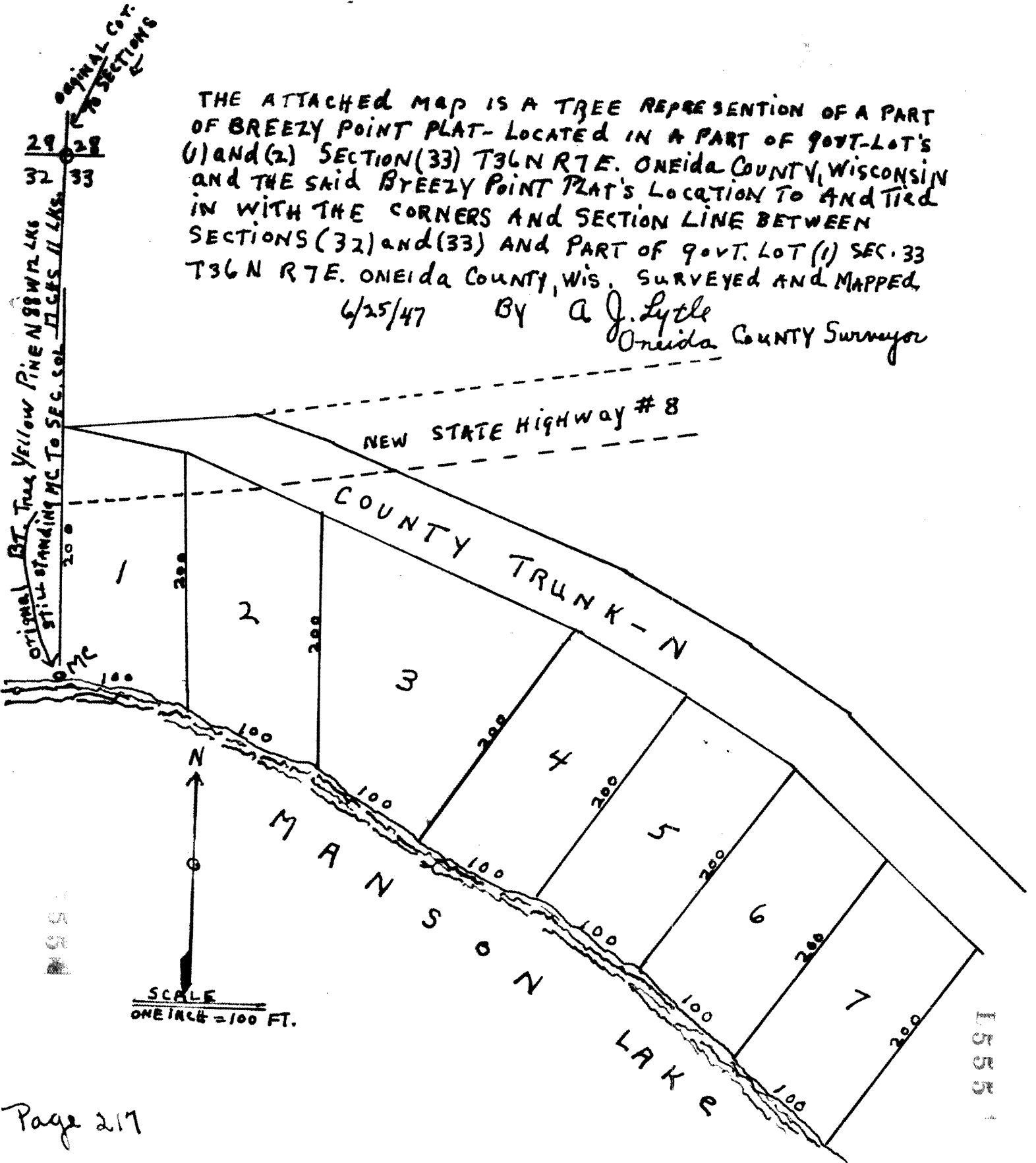
1555

Set out for reference purposes only

RECEIVED & FILED # 1555.5
 Office County Surveyor's Office
 Date NOV. 21 1988
 By
 OCS Assn.

THE ATTACHED MAP IS A TREE REPRESENTATION OF A PART OF BREEZY POINT PLAT- LOCATED IN A PART OF GOVT-LOT'S (1) AND (2) SECTION (33) T36N R7E. ONEIDA COUNTY, WISCONSIN AND THE SAID BREEZY POINT PLAT'S LOCATION TO AND TIED IN WITH THE CORNERS AND SECTION LINE BETWEEN SECTIONS (32) AND (33) AND PART OF GOVT. LOT (1) SEC. 33 T36N R7E. ONEIDA COUNTY, WIS. SURVEYED AND MAPPED

6/25/47 BY A. J. Lytle
Oneida County Surveyor



1555