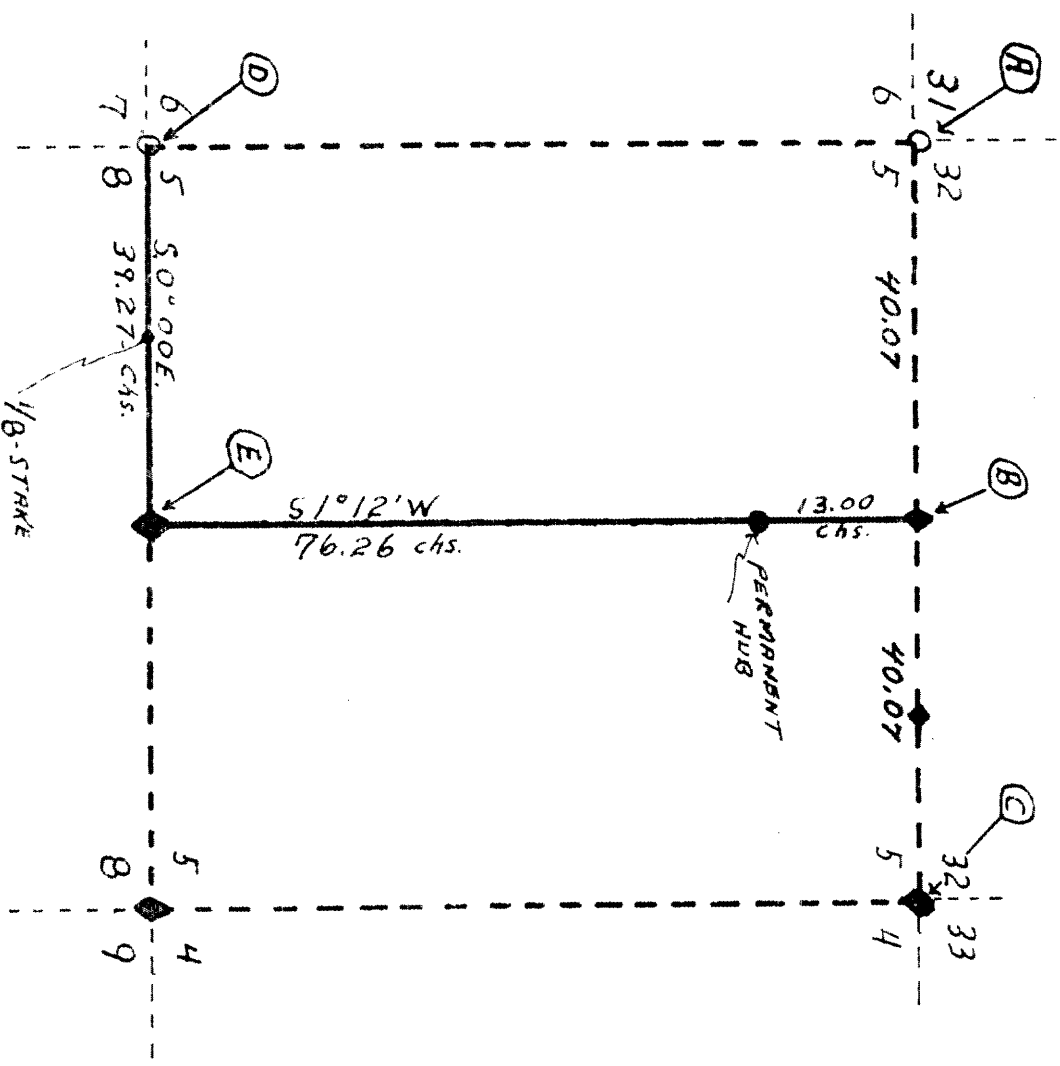




SECTION 5 T. 38 N. R6E
ONEIDA COUNTY

RECEIVED & FILED # **L562**
Cl. in County Surveyor's Office
Date **FEB 27 1887**
By
OCS Area #



LEGEND

0- BRASS CAP. IRON PIPE

◆ SQ. WOOD POST SCRIBED

SURVEYERS

B. STURM - K. VOYT TRANSIT

NOTE: ALL BEARINGS TRUE

MAP BY **L562** Feb. 19-1860
K. VOYT

SECTION 5 T. 38N R. 5E.
ONEIDA COUNTY

1562

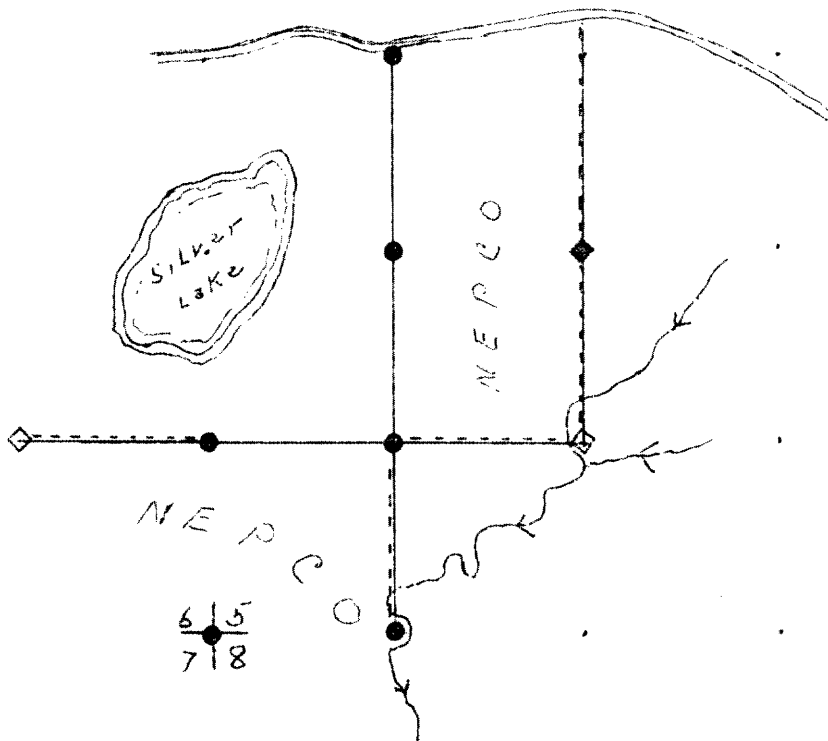
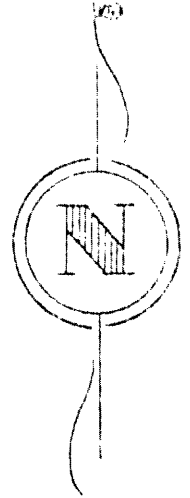
CORNER DATA

- A. SECTION CORNER TO SECTIONS 31-32-6-5
IRON PIPE - SQ. SCRIBED WOOD CORNER POST
JACK PINE B.T.
- B. QUARTER CORNER BETWEEN SECTIONS 5-32
NORWAY PINE SQ. SCRIBED WOOD CORNER POST
36 IN ABOVE GROUND SET BY NEPCO SURVEY
- C. SECTION CORNER TO SECTIONS 32-33-5-4
VERY OLD SQ. SCRIBED CEDAR CORNER POST
ESTABLISHED: B.T. VERY OLD WHITE PINE RAMPAGE 20 IN.
APPROX. 0.30 LKS. NORTH OF CORNER
- D. SECTION CORNER TO SECTIONS 6-5-7-8
IRON-PIPE-BRASS CAP ALSO SQ. SCRIBED
WOOD CORNER POST- 36 IN ABOVE GROUND
- E. QUARTER CORNER BETWEEN SECTIONS 5-8
SQ. SCRIBED WOOD CORNER POST

RECEIVED & FILED #.....
 Oneida County Surveyor's Office.....
 Date.....
 By.....
 OCS Area #.....

T. 38 N R. 6 E
 County
 SEC. 5

LK62



LEGEND

- Iron Pipe or Brass Cap
- ◆ Scribed Post
- ◇ Wood Stake
- ⊕ Hub
- x Location Tag
- Instrument lines run
- Instrument lines run - Painted-Blazed
- Pocket Compass lines run - Painted

all corners established previously.

Job Completed 12/14/10 Map By Bill EgTvedt