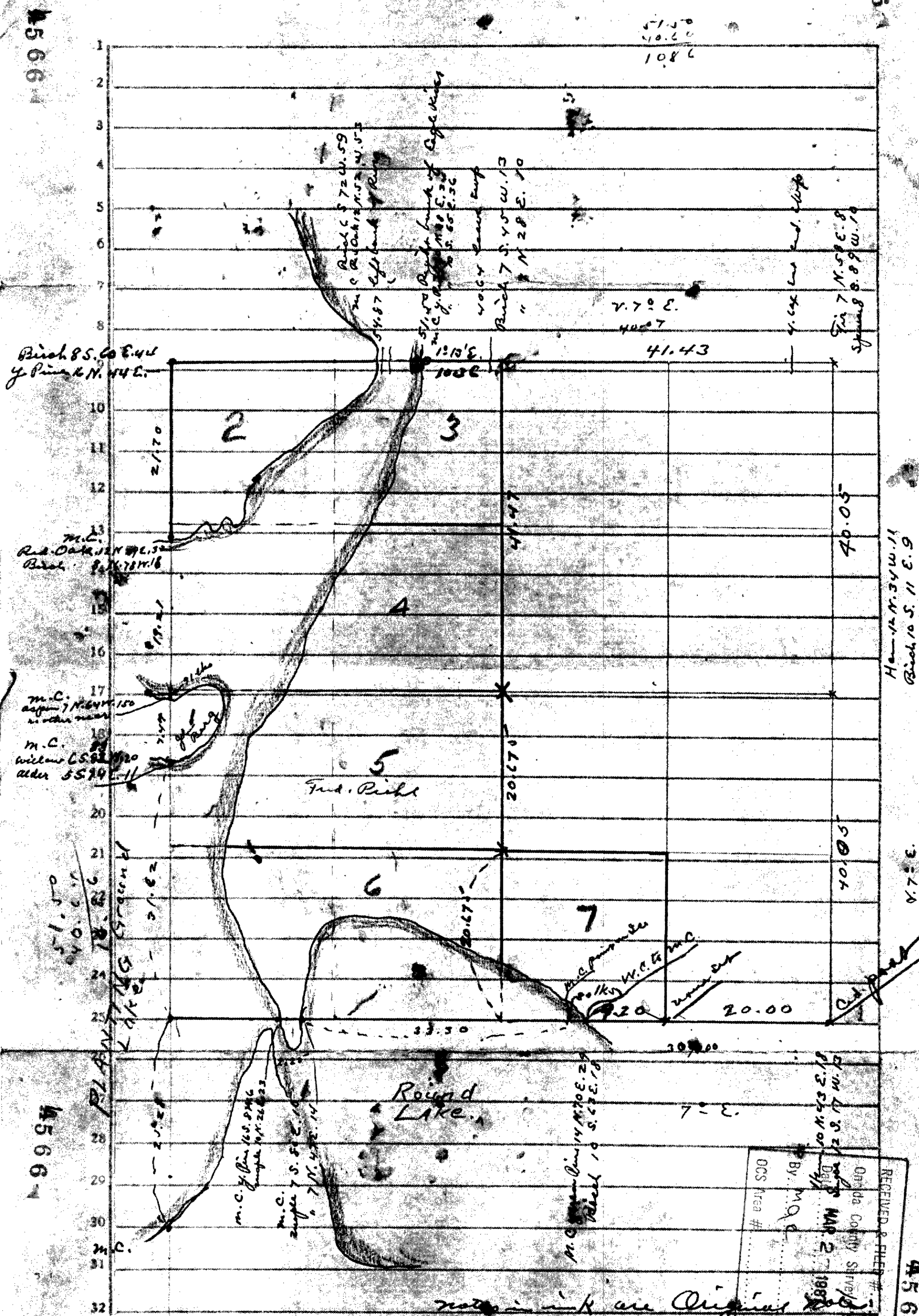


See 20-39-11

45664



45664

45664

45664

45664

45664

notes in ink are Original

1916	17	
1859	25	
57	17	CC
1995	341	341

RECEIVED & FILED # _____

Orinda County Sheriff's Office

By: M.A.C.

DATE: MAR 27 1987

DCS Area # _____

Dec 20-39-11
Nov 22-1916

47
N.W. Cor found
set at
Ray Bin (step) N. 25 3/4 W. 6
Elevation of dump
step below 5.10 E. 4 1/2
marked near B.T.
Pine step 1/6 N. 72 E. 60%
Pine step 1/8 S. 2 3/4 E. 22 7/8
Y. 2-10 E.
set in one point 4 1/2
in in front of pond
S. for New Can
bed near
1908 set. 140 1/2 E. 7
no point
21.00 + step of lake
40.00 further on bed
R.V. at S. 28 1/2 E. 28 E
set. 328 1/2 lbs. E. of
point for 1/2 cor. on
See as monument to
B.T. by D. N. V. 1/2
9538 set Found from
S. E. of W. 1/2
80 2 1/2 W. 1/2
R.V. at S. 21 7/8 E

Lat 3
N.W. corner C. W. of N. 1/5
Ray Bin N. 7 1/2 E. 34
50 22 5 00 E. 56

marked point
Y. 5 4 1/2
Set a new B.T.
to Lakes E. of original
Cor on Bank of Lake
Set a Cedar post
4 x 4 in
marked near B.T.
Mound 7 in 10 N. 41 W. 18 1/2
" Pine 8 N. 46 1/2 E. 38 1/3
" " 1 E. S. 1 1/2 W. 28
Y. 3-11 E
N 1/4 S set
bed near 4 x 2 in
5 point 8 S. 42 1/2 E. 50 1/3
Pine step 20 S. 23 W. 62 1/2
" " 20 S. 62 1/2 W. 61 1/2
V. 5 f. N 1/4 S. V. 0-10
82.82 set 14 1/2 W. W. of
1/2 post point
See

S. E. cor. found
old post. and
Station 70 N. 43 E. 18

marked by U.S. Surveyors
marked 7 39 N. R. 11
S. 21 B.T.
Set a new C. d. post
4 x 4 in
marked near B.T.
Pine = 8 S. 49 1/4 W. 40 1/4
Pine. C. S. 14 1/4 E. 29 1/2
Pine = 12 N. 57 3/4 W. 20 1/2
V. 3-11 E
W. for S. E. cor. 100 E.
20.00 One beech on
Pole 1 1/2 diam
3 1/2 1/2 N.
49.20 Set Camp stake
41.41 1/2 set. N. 1/5. mound 1/2 in
49 1/2 1/2 W. S. of
Pine 16.
R.V. at when 1. 2 1/2 E
E. of W. 1/2 S. point on
Y. 1-15 E.
82.72 1/2 set N. 1/5 mound
6 lbs. N. of tree
82.65 set 32 E. 1/2 N. 1/2 E
R.V. at 1-4 1/2 E

W.P. T. W. 1/4 S. cor
at post 4 x 4 in
100 lbs. W. of 1/2 cor in
set

W. Birch 7 in stump of
Birches. S. 49 E. 6 1/2
g. Pine 7 S. 45 1/2 W. 10
Y. 5 E.
W. C. T. M. C. S. of
W 1/4 cor. 60 lbs.
S. of point for new C.
on
set and post 4 x 4 in
Pak. 9 S. 10 1/2 E. 9 lbs.
V. 5 E
N E cor. marked
at intersection of
at intersection of
N. 58 E. 8 lbs. in
ditch
set at 4 x 4 in
marked B. T.
W. Pine step. 12 N. 22 E. 11 1/2
Pine in step. 12 N. 24 1/2 W. 59 1/3
Pine 6 S. 69 1/4 E. 24 1/3
Pine 10. 7 S. 87 E. 30 1/2
V. 3-4 E.