

170

170

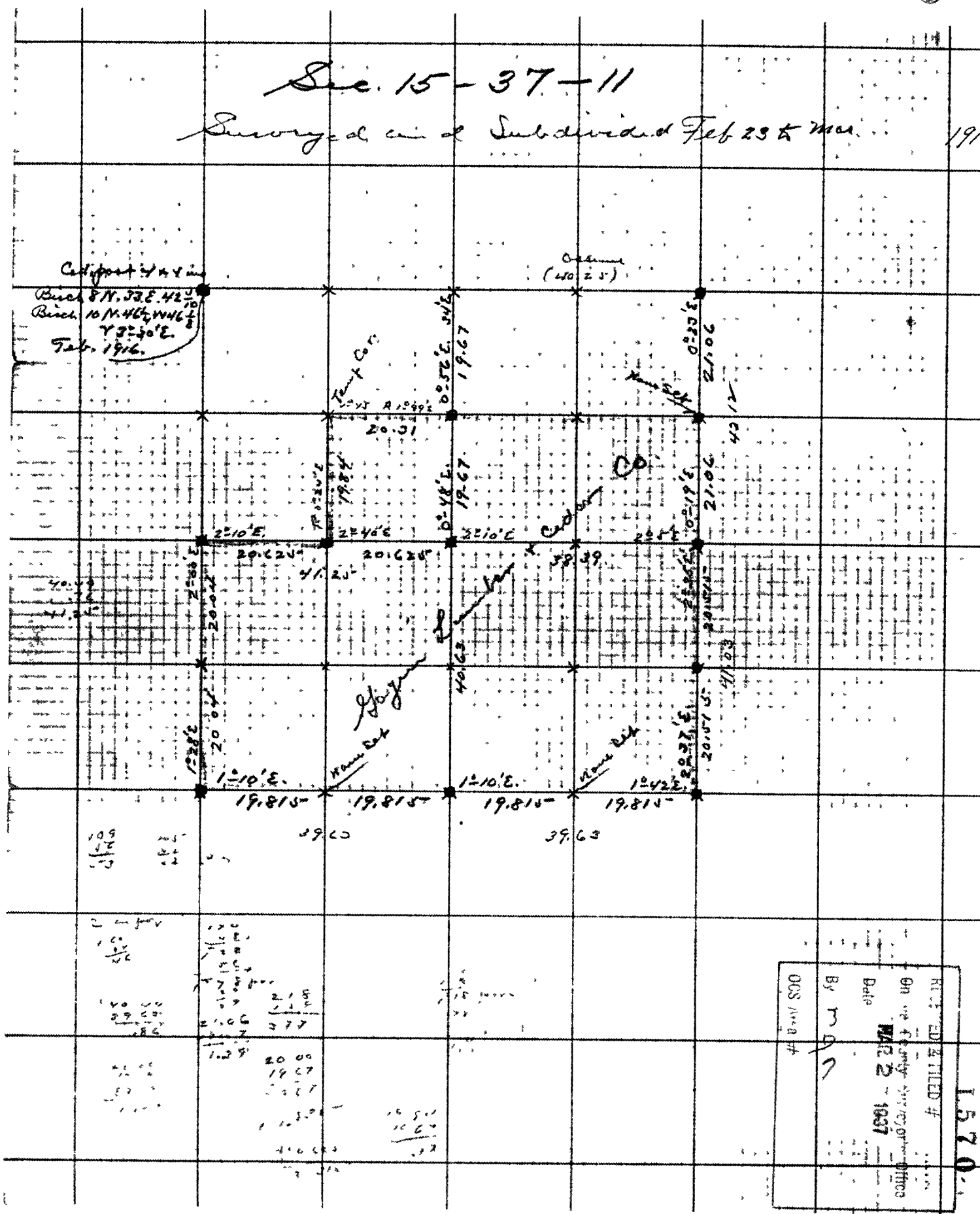
Sec. 15-37-11

Surveyed and Subdivided Feb 23 to Mar. 1916

1916

Center point of 40 x 40 in
Block 8 N. 33 E. 42
Block 10 N. 46 W. 46
73-30'E.
Feb. 1916.

Outline
(40 x 5)



109
21
10

20.624
 19.815
 19.67
 21.06
 1-10'E.
 2-10'E.
 3-10'E.

39.65

39.63

RECEIVED & FILED #
 On file of the Surveyor's Office
 Date **MAR 2 1937**
 By *M. A. C.*
 OCS Area #

1570

Sec. 15-37-11

Sec. 15-37-11

N. 1/2 Sec. S.W. Cor. N 2 1/2 E.
40.08 2nd. 42 1/2 E. 108'

W 1/2 Sec. Cor. West
S. 1/2 Sec. 44' x 44'
E. 1/2 Sec. 44' x 44'
N 8 1/2 W 93 1/2'

W 1/2 Sec. 44' x 44'
S. 1/2 Sec. 44' x 44'
N 8 1/2 W 93 1/2'

E 1/2 Sec. S.W. 1/2 S. V. 2-20' E.
R. V. 01 1/2 Sec. 41 - 2-20' E.
7964 2nd. 2 1/2 N of E 1/2 S.
N 1/2 Sec. E 1/2 S. 2-20' E.

N 1/2 Sec. E 1/2 S. V. 2-27' E.
42 1/2 2nd. 133 1/2 W 1 1/2'

N.E. Cor.
S. 1/2 Sec. 44' x 44'
E. 1/2 Sec. 44' x 44'
N 33 1/2 E 178'

N.E. Cor.
S. 1/2 Sec. 44' x 44'
E. 1/2 Sec. 44' x 44'
N 33 1/2 E 178'

Bunch 7 N 7 1/2 E. 24'
Spencer 9 N 2 1/2 E. 32 1/2'

Bunch 7 N. 36 1/2 W 46 1/2'

S. 1/2 Sec. 44' x 44'
E. 1/2 Sec. 44' x 44'
N 8 1/2 W 93 1/2'

N 1/2 Sec. 44' x 44'
E. 1/2 Sec. 44' x 44'
N 8 1/2 W 93 1/2'

N 1/2 Sec. 44' x 44'
E. 1/2 Sec. 44' x 44'
N 8 1/2 W 93 1/2'

N 1/2 Sec. 44' x 44'
E. 1/2 Sec. 44' x 44'
N 8 1/2 W 93 1/2'

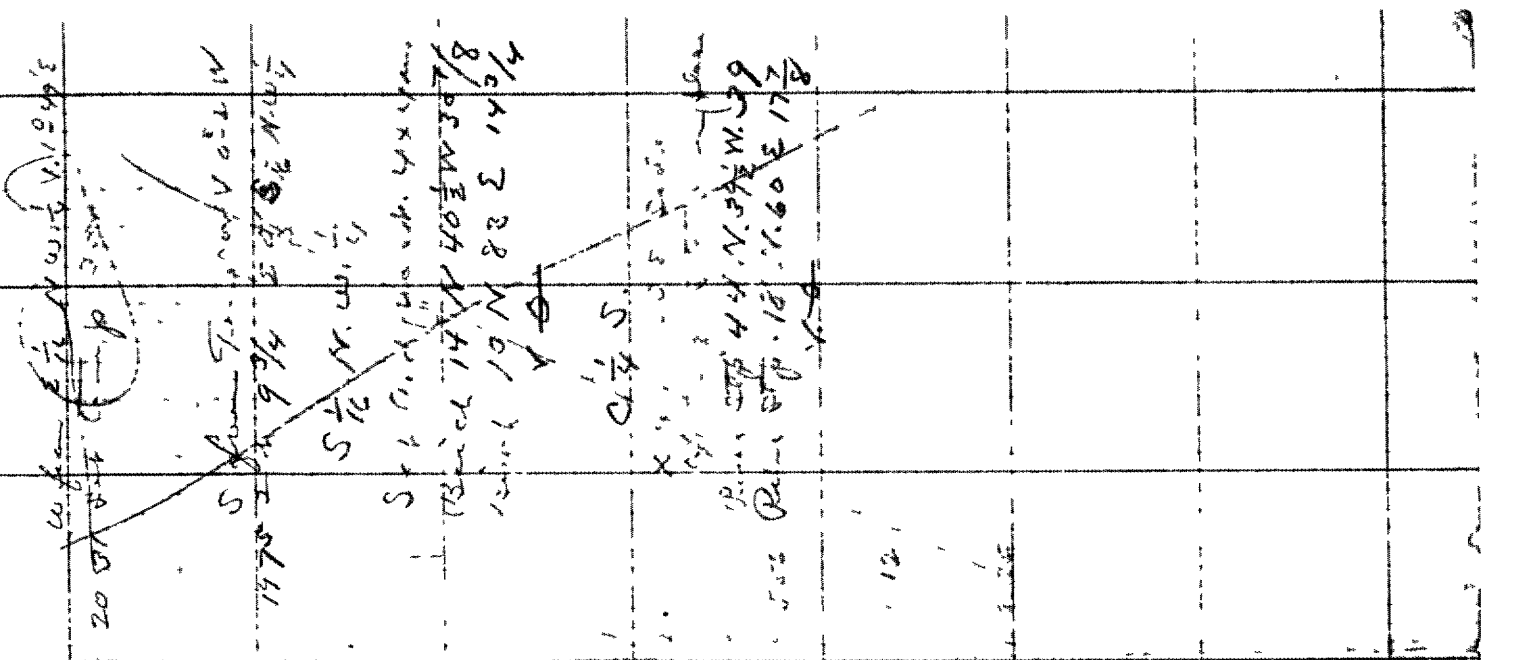
N 1/2 Sec. 44' x 44'
E. 1/2 Sec. 44' x 44'
N 8 1/2 W 93 1/2'

N 1/2 Sec. 44' x 44'
E. 1/2 Sec. 44' x 44'
N 8 1/2 W 93 1/2'

N 1/2 Sec. 44' x 44'
E. 1/2 Sec. 44' x 44'
N 8 1/2 W 93 1/2'

N 1/2 Sec. 44' x 44'
E. 1/2 Sec. 44' x 44'
N 8 1/2 W 93 1/2'

N 1/2 Sec. 44' x 44'
E. 1/2 Sec. 44' x 44'
N 8 1/2 W 93 1/2'



7964
42100
4192