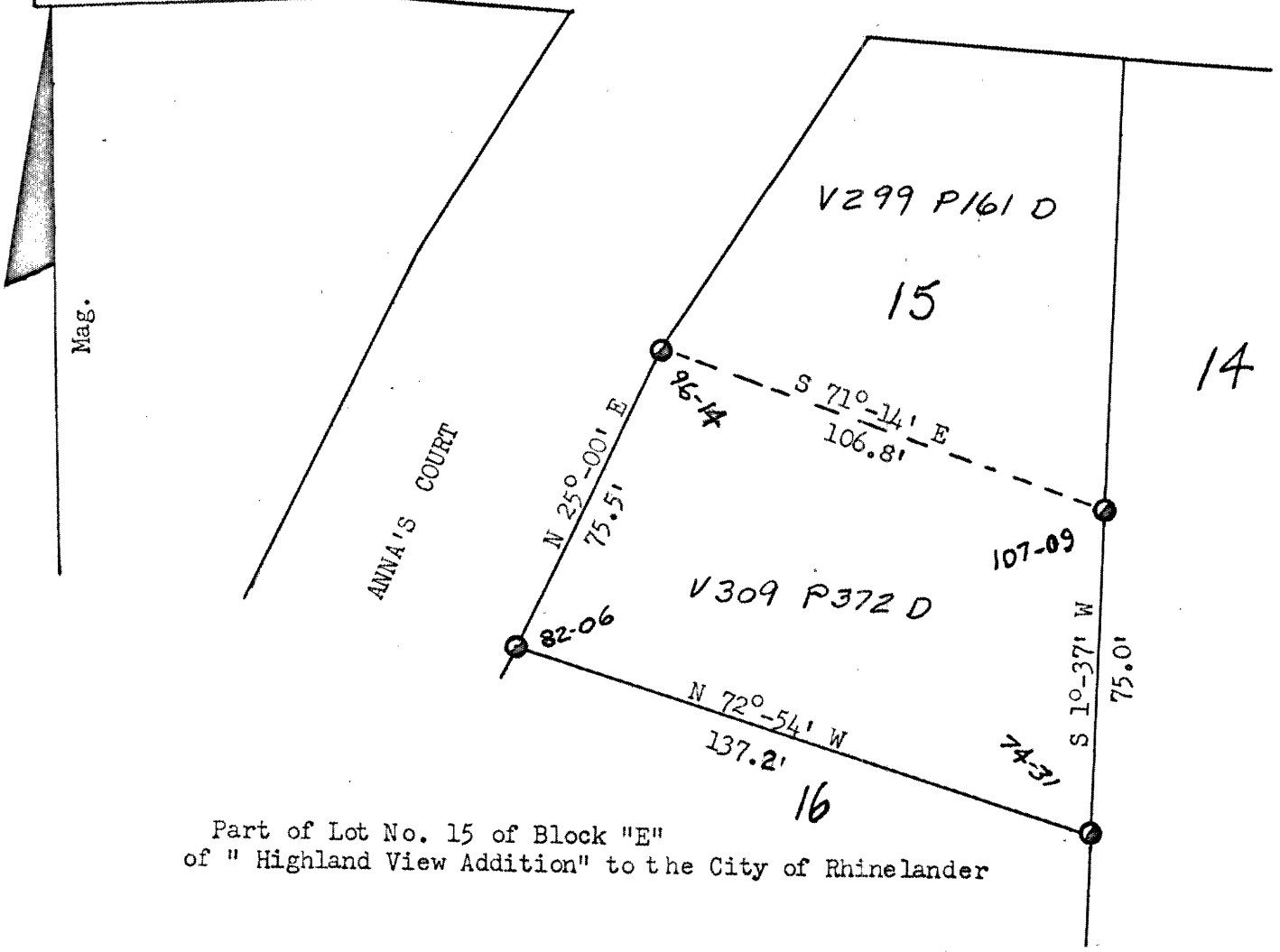


RECEIVED & FILED # **L58**
 Oneida County Surveyor's Office
 Date **FEB. 11 1986**
 By **M JH**
 NORTH Area #.....

FILE Co Surveyor
SW 1/4 Sec 6
T 36 N R 9 E

HIGHVIEW

PARKWAY



Part of Lot No. 15 of Block "E"
 of " Highland View Addition" to the City of Rhinelander

FOR: Kenneth Cheslock
 June 14, 1971

Edward H. McNown

By : Edward H. McNown
 S-760

● = iron pipe - in place by others

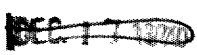
Scale - 1" = 40'



CITY OF RHINELANDER

[Handwritten scribble]

L58



172