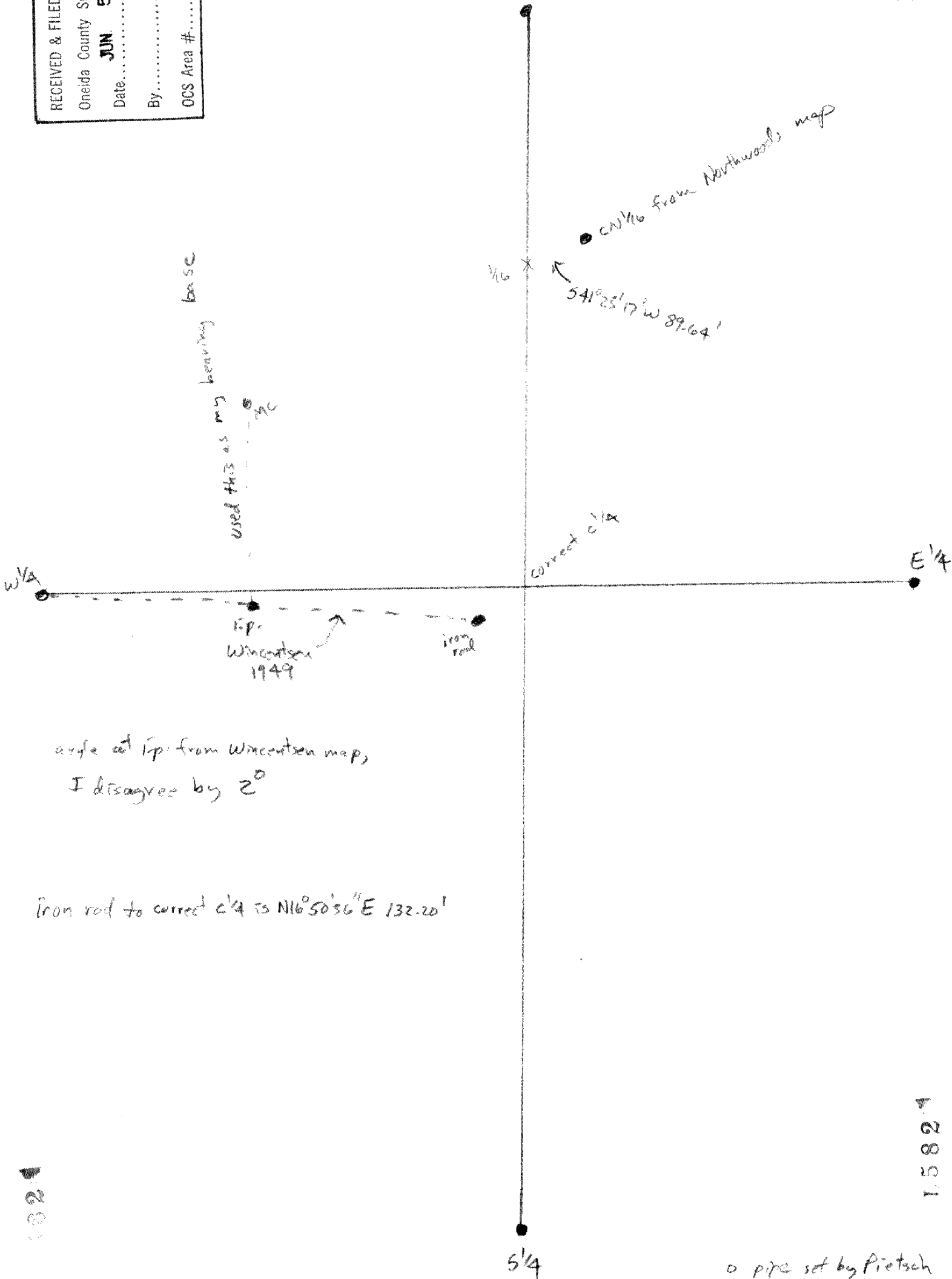


RECEIVED & FILED # 1582  
 Oneida County Surveyor's Office  
 Date JUN 5 1987  
 By .....  
 OCS Area # .....

Sec 22, 38-7

Preliminary

1582



angle at ip from Wincentzen map,  
 I disagree by 2°

Iron rod to correct c 1/4 is N16° 50' 56\"/>

o pipe set by Pietsch  
 is 300' off.

1582

1582

15821

5/14/87 Seymour

22, 38-7  
Sub Division

11/4  
11,506.7116 11,500.9561  
11,422.7767 11,435.6798

10.41 5511.41  
N 6-85.31 E 5517.43

S 41-25-17 W  
89.64

1300.04  
S 25-17 E

10,145.0376 10,187.2472  
11,422.7767 11,470.2431

258.22  
2743.47

10,187.9194 10,121.9110  
11,422.7767 11,471.3315

then to E 64 75  
2013.56  
N 87-22-34 E  
40 A.  
N 56-16 21 E 541.73

8877.6574  
14151.1782  
8741.1871  
14,162.2545

S 55-1-41 W

8666.1141  
10,092.7854

N 16-50 16 E  
132.20

N 87-63-05 W  
E 11,422.7767  
N 87-22-34 E  
7560  
E 11,422.6703  
33 W  
33 E

2203.17

7366.1215  
11,422.6703

S 4

5751.4104  
11,418.3403

0E 1