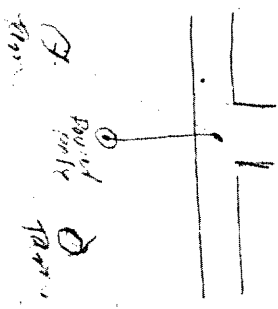


RECEIVED & FILED **1585**  
 On the County Surveyor's Office  
 Date **JUL 3 1987**  
 By **W.C.**  
 OCS Area #

FK Nail  
 Nail in Homestead  
 with Bibb on base  
 Nail in corner to  
 the NE with Bibb  
 Nail in post pole  
 to NW

June 1, 1987

178.0



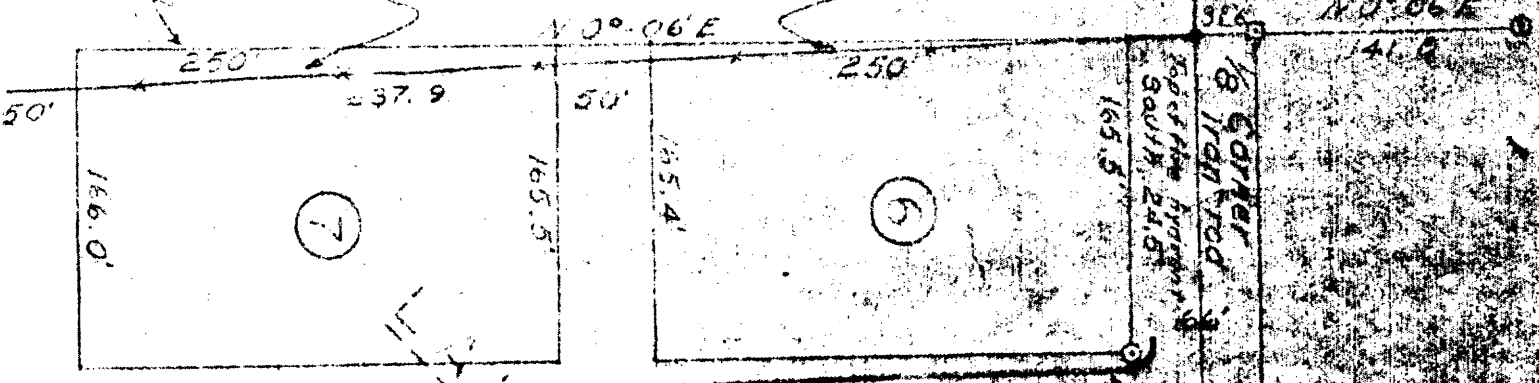
Mack 1958 by Keith Hall  
 Tam 10, 5881, 394 ft  
 Iron 3380'E, 35.6 ft  
 N/A as used May 19, 1970  
 R.R. Spike  
 Tam, 501 - 3881  
 Power pole - 3380  
 Tam SE - 41.61



R.R. Spike  
 1st Tomogah  
 530' W, 39.4  
 6' Tomogah  
 510' E, 37.5  
 1983

N 89° 47' W  
 1215.0'

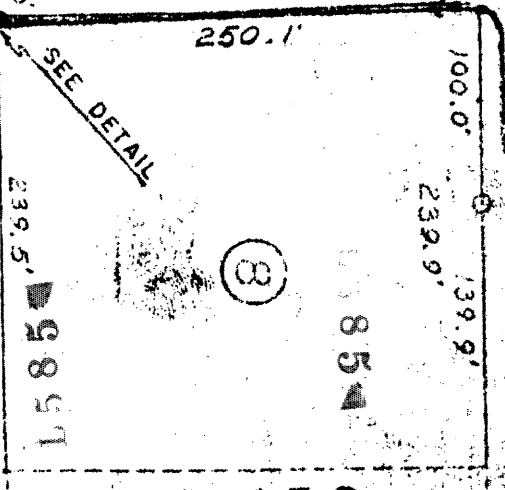
ence on true 1/8 line



LOIS STREET

RIVER

DOR



5851

E 71

DATE  
 OF THE SURVEY  
 OCS AREA #

15887

LINE 5 (Cont'd)

RHINELANDER QUAD. - 236

Feet

- 6 3 1.9 UE D 2 B 2, 1.95 mi WNW. of tablet; along Co. Hwy. "K", near quarter cor. between  
secs. 2 and 36; Tps. 36 and 37 N., R. 8 E.; in center of hwy. at T-rd. S.; top of  
RR. spike; painted "UE 1560.3" 1560.33
- 4 2.5 Rhinelander, 2.5 mi WNW. of along Co. Hwy. "K" from post office at; near cor.  
secs. 1, 2, 33 and 36; Tps. 36 and 37 N., R. 8 E.; at junction with State  
Hwy. 47; 173 ft N.; 66 ft W. of and 1.3 ft lower than center of crossroads; 2.0 ft  
higher than telephone pole; in concrete post; standard tablet stamped "42 SAN  
1964 1598" painted "EM 1597.6" 1597.552
- 5 2.5 Reference mark, 257 ft S. of tablet; 84 ft S. and 44 ft W. of center of crossroads  
on W. end of corrugated steel culvert; a punched hole; painted "RM" 1599.21
- 6 3.5 UE 49 A, 1.0 mi W. of tablet; along Co. Hwy. "K", near NW. cor. of sec. 2, T.  
36 N., R. 8 E.; in center of Hwy. at T-rd. N.; top of RR. spike; painted  
"UE 1591.2 centerline" 1591.21
- 7 4.3 UE 49 B, 1.7 mi W. of tablet; along Co. Hwy. "K" about 0.1 mi W. of quarter cor.  
between secs. 3 and 34; Tps. 36 and 37 N., R. 8 E.; 17 ft S., 200 ft W. of and  
1.3 ft lower than center of T-rd. S.; on S. end of corrugated steel culvert;  
a punched hole; painted "UE 1588.5" 1588.53
- 8 5.1 UE 49 C, 2.6 mi W. of tablet; along Co. Hwy. "K", near quarter cor. between  
secs. 4 and 33; Tps. 36 and 37 N., R. 8 E.; in center of hwy. at T-rd. S.; top  
of RR. spike; painted "UE 1631.9 centerline" 1631.89

CASSIAN QUAD. - 237

- 9 5.9 Rhinelander, 5.4 mi W. of Rhinelander Paper Co. Mill; at along Co. Hwy. "K"; 0.25  
mi W. of cor. secs. 4, 5, 32 and 33; Tps. 36 and 37 N., R. 8 E.; at junction  
of Co. Hwys.; "K" and "N" S.; 26 ft N., 17 ft E. of and 0.4 ft lower than center  
of T-rd. S.; 1.5 ft S. of fence; in concrete post; standard tablet stamped "TT  
25 TX 1939 1651" painted "EM 1651.5" 1651.468
- 10 5.9 Reference mark, 106 ft SW. of tablet; 50 ft S. and 70 ft W. of center of T-rd.  
S.; in SE. side of 18-in. oak tree; a RR. spike painted "RM" 1654.87

LINE 6

GENERALLY NORTH IN NORTH HALF OF QUAD THENCE WEST (G. Sandul, 1964; CV 1750)

RHINELANDER QUAD. - 236

- 6 28 0.0 Roosevelt, 0.25 mi E. along the Minneapolis, St. Paul and Sault Ste Marie RR.  
from; near E. sixteenth cor. between secs. 24 and 25; T. 37 N., R. 9 E.; at first  
curve E. of Roosevelt; in line with N. rail of E. tangent; 109 yards W. of point  
of tangency of curve; 175 yards W. of bridge 222 C; 32 ft N., 93 ft E. of and  
2.1 ft higher than center of RR. at private rd. crossing; a standard disk  
stamped "ROOSEVELT 1921" USC&GS A Station, in top of concrete post; painted  
"EM 1577.2" 1577.247
- 0.8 UE Roosevelt A, 0.8 mi SW. of tablet; along blacktop rd., in NW $\frac{1}{4}$  sec. 25; T. 37  
N., R. 9 E., 50 ft W. along rd. from center of Y-rd. W., 41 ft normal and on N.  
side of rd., 1.3 ft lower than center of Y-rd.; in NW. side of 8-in. poplar tree  
a RR. spike; painted "UE 1589.0" 1589.04
- 29 1.5 Roosevelt, 1.3 mi W. along the M. St. P. & S.S.M. RR. from; near center of N.  
half of sec. 26; T. 37 N., R. 9 E.; 109 yards E. of culvert 221 P; at a curve;  
150 yards E. of point of tangency, in line with N. rail of the W. tangent;  
22 ft N., 124 ft E. of and 1.2 ft higher than center of RR. at rd. crossing;  
a USC&GS A disk stamped "COX 1921" and set in top of concrete post;  
painted "EM 1576.4" 1576.381

88-18



7. Conveyance  
S. 20° N. 133.4  
6' 10" 1000  
S. 10° E. 37.5

N 40° 41' N  
115.1

ridge on true lg line

N 10° 06' E

N 10° 06' E  
141.5

1/8 CORNER  
IRON ROD

Positive Ayrault  
South, 24.5'

165.5

49.5

LOIS STREET

RIVER

DOR

250.1

250.1

100.0  
239.9' 39.9'

199.7'  
240.0'

40.4



SEE DETAIL

SEE DETAIL

E.A.V.