

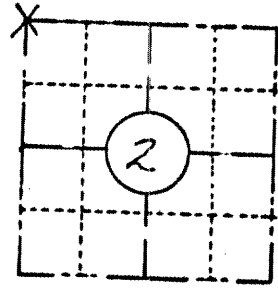
FIELD SURVEY NOTES
PRESERVATION OF LANDMARKS
 (Pursuant to Section 59.635(7) Wisconsin Statutes)

State Highway Commission of Wisconsin
 Form E-D-707-85

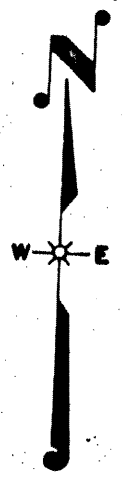
1586

1586

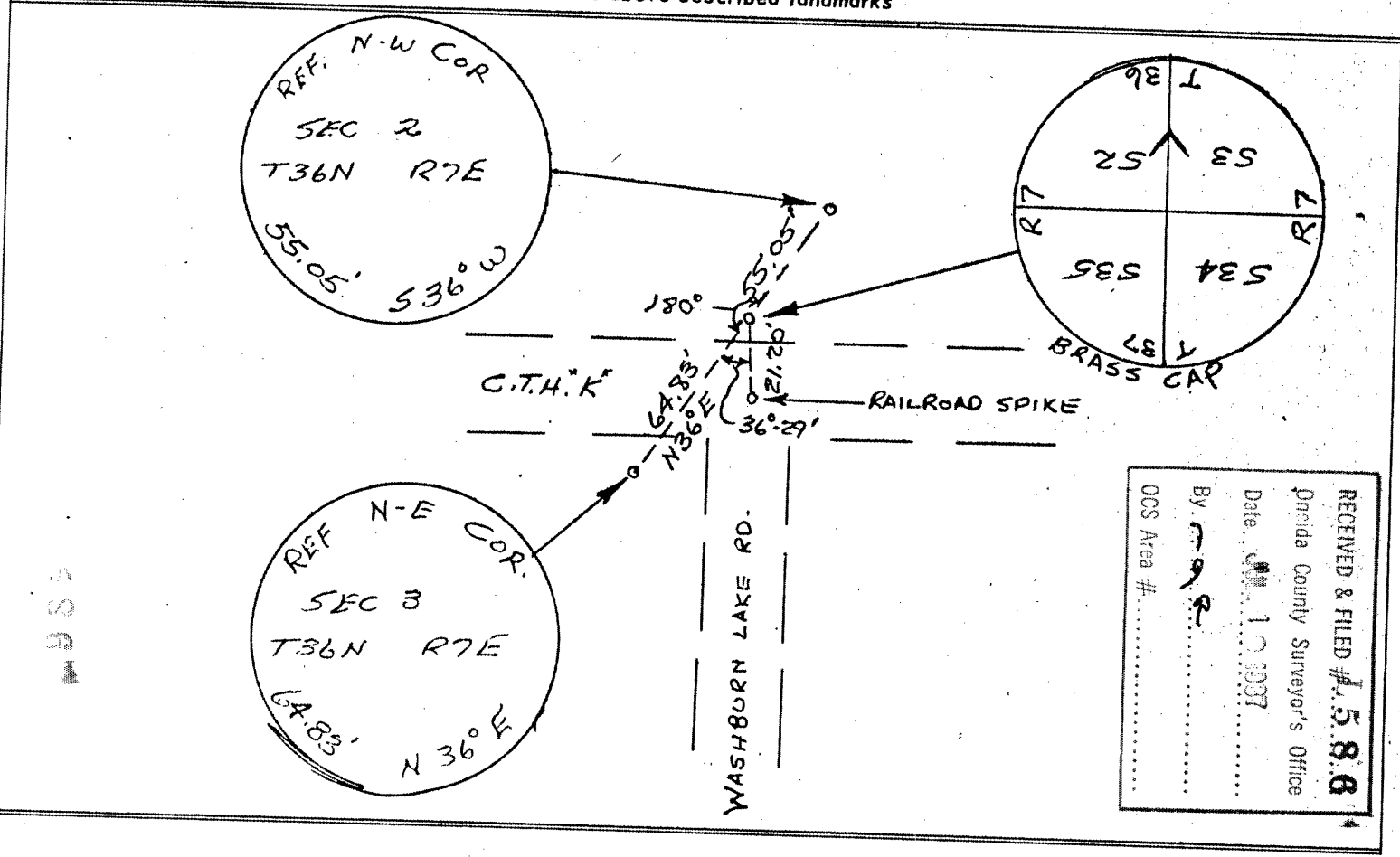
COUNTY ONEIDA		
TOWN WOODBORO		
HIGHWAY COUNTY TRUNK "K"		
SECTION 2	TOWNSHIP 36 N.	RANGE 7 E
TYPE OF LANDMARK		



LOCATION SKETCH
 (Location of landmark indicated by "x")



This space for copy of field notes or ties to the above described landmarks



RECEIVED & FILED # **1586**
 Oneida County Surveyor's Office
 Date: **9/18/67**
 By: **[Signature]**
 OCS Area #

FILED UNDER PROJECT NUMBER 50704(6)		
SBC DISTRICT OFFICE NUMBER 7	CITY RHINELANDER	COUNTY ONEIDA
LOCATED OR ESTABLISHED BY NAME Wilbur J. Cain Jr. TITLE Project Engineer DATE 8-29-67		

COUNTY CLERK'S OFFICE COUNTY OF WISCONSIN	
DATE RECEIVED FOR RECORD 9/18/67	DATE COPY SENT TO COUNTY SURVEYOR 9/18/67
SIGNATURE OF COUNTY CLERK [Signature]	