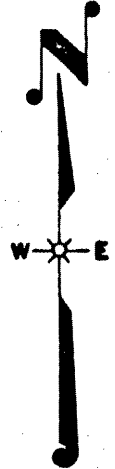
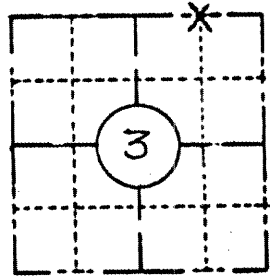
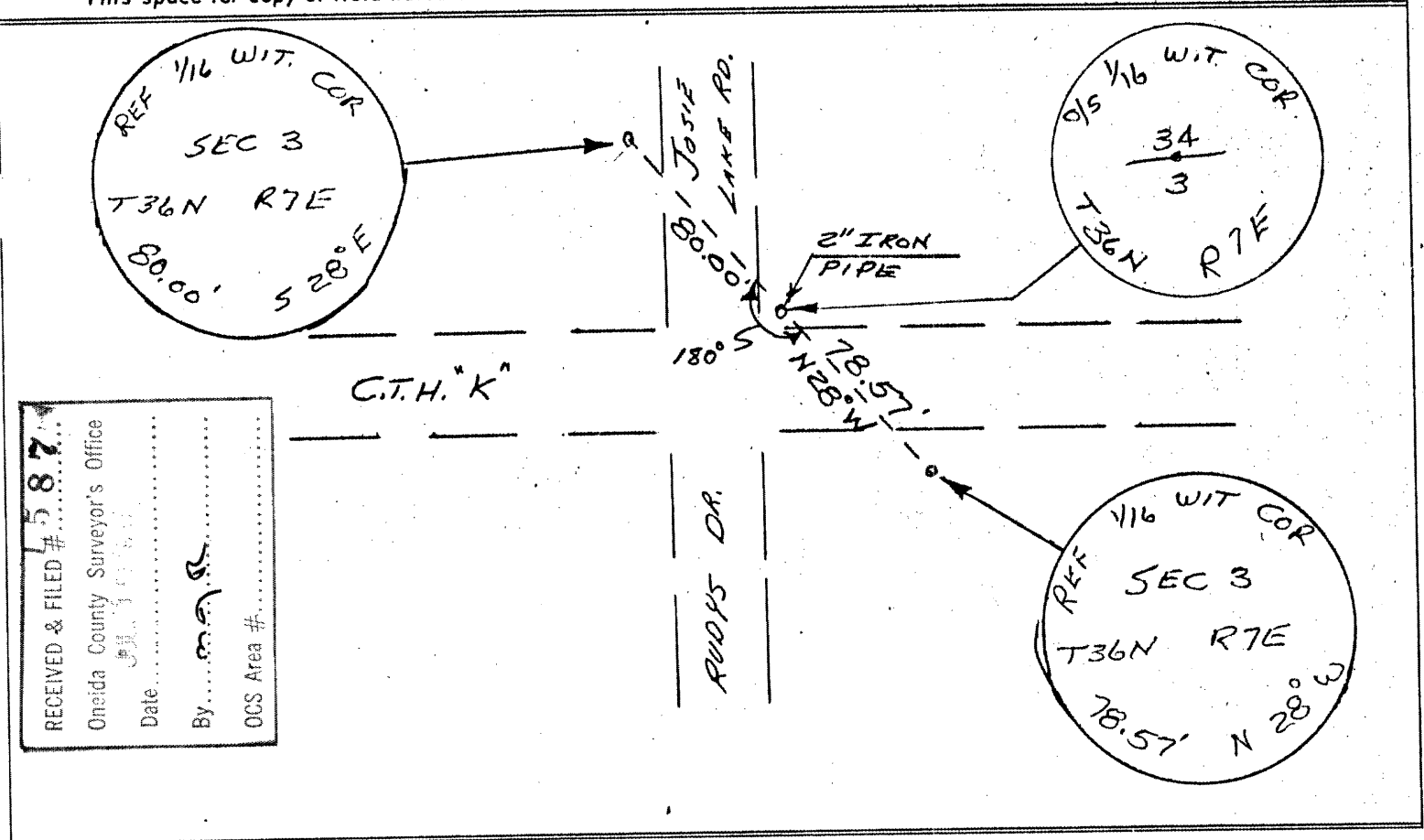


| | | |
|-----------------------------|-------------------|--------------|
| COUNTY ONEIDA | | |
| TOWN WOODBORO | | |
| HIGHWAY COUNTY TRUNK "K" | | |
| SECTION 3 | TOWNSHIP 36 N. | RANGE 7E. |
| TYPE OF LANDMARK | | |



LOCATION SKETCH
(Location of landmark indicated by "x")

This space for copy of field notes or ties to the above described landmarks



RECEIVED & FILED # 1587
Oneida County Surveyor's Office
Date

| | | | | |
|--|---------------------|------------------|--|--|
| FILED UNDER PROJECT NUMBER 50704(6) | | | COUNTY CLERK'S OFFICE COUNTY OF WISCONSIN } 85 | |
| SHC DISTRICT OFFICE NUMBER 7 | CITY RHINELANDER | COUNTY ONEIDA | DATE RECEIVED FOR RECORD 9/18/67 | DATE COPY SENT TO COUNTY SURVEYOR 9/18/67 |
| LOCATED OR ESTABLISHED BY NAME <u>Wilbur J. Cain Jr.</u> TITLE <u>Project Engineer</u> DATE <u>8-29-67</u> | | | SIGNATURE OF COUNTY CLERK <u>Barbara J. Usery</u> | |

1587

12897