

PRESERVATION OF LANDMARKS

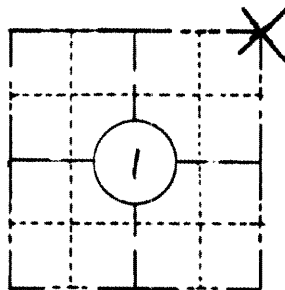
(Pursuant to Section 59.635(7) Wisconsin Statutes

E-D-707-69

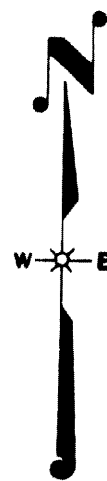
L592

L592

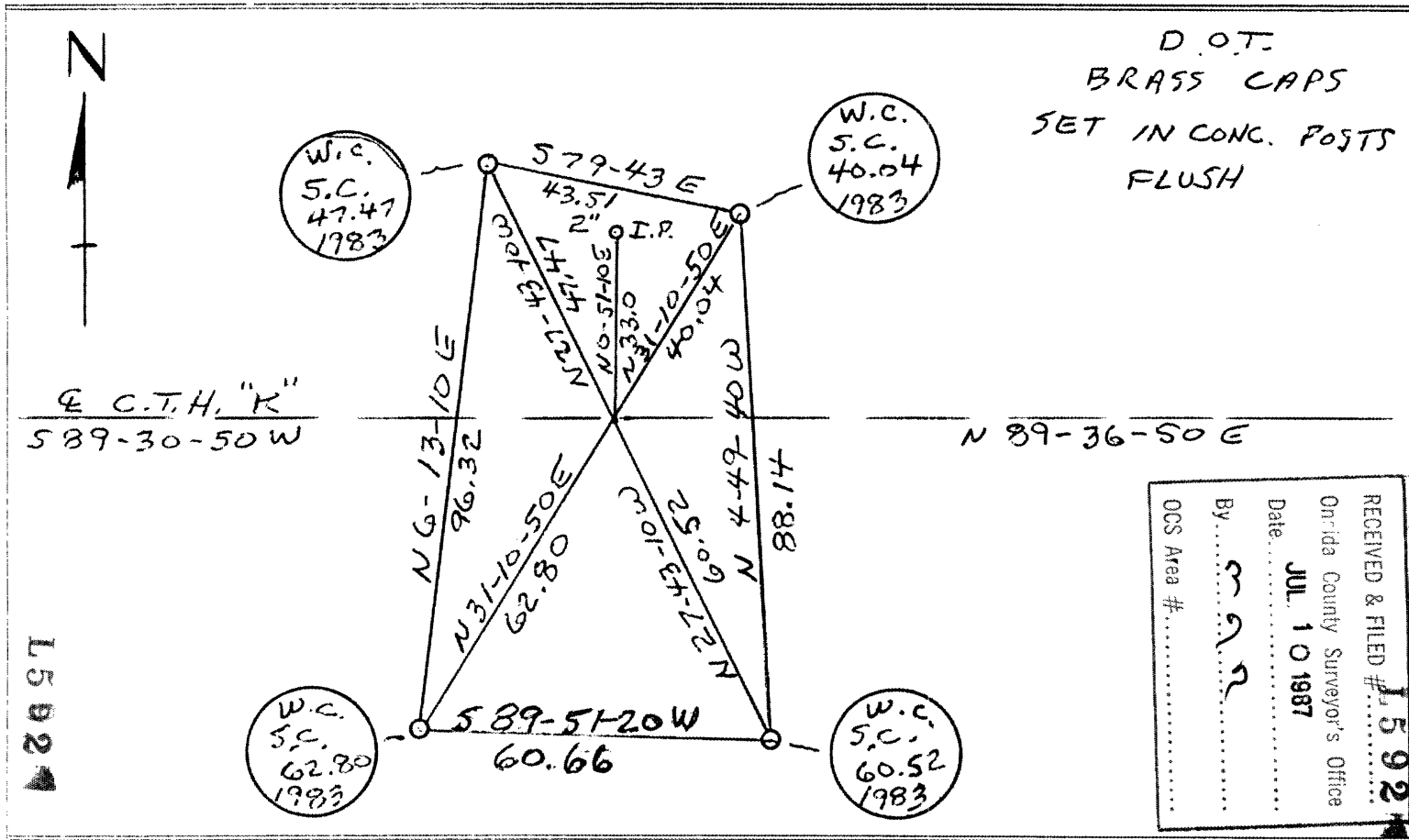
COUNTY ONEIDA		
TOWN NOKOMIS & CASSIAN		
HIGHWAY C.T.H. "K"		
SECTION 1	TOWNSHIP T36N	RANGE R6E
TYPE OF LANDMARK R.R. SPIKE IN PAVEMENT		



LOCATION SKETCH
(Location of landmark indicated by "x")



This space for copy of field notes or ties to the above described landmarks



L592

RECEIVED & FILED # **L592**

On-ida County Surveyor's Office
Date **JUL 10 1987**

By **mar**

OCS Area #

FILED UNDER PROJECT
9456-01-70

DISTRICT OFFICE NUMBER 7	CITY RHINELANDER	COUNTY ONEIDA
------------------------------------	----------------------------	-------------------------

LOCATED OR ESTABLISHED BY AND REFERENCED BY:
NAME **EDWARD H. McNOWA**

TITLE _____ DATE _____

COUNTY CLERK'S OFFICE
COUNTY OF **Oneida** WISCONSIN } 55

DATE RECEIVED FOR RECORD 10-3-83	DATE COPY SENT TO COUNTY SURVEYOR 10-3-83
--	---

SIGNATURE OF COUNTY CLERK
d.R. Macdonald