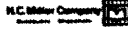


RECEIVED & FILED #L603
 Oneida County Surveyor's Office
 Date: NOV. 05 1987
 By: J.S.R.
 CCS Area #

FORM NO. 985-A



Stock No. 26273

RECEIVED

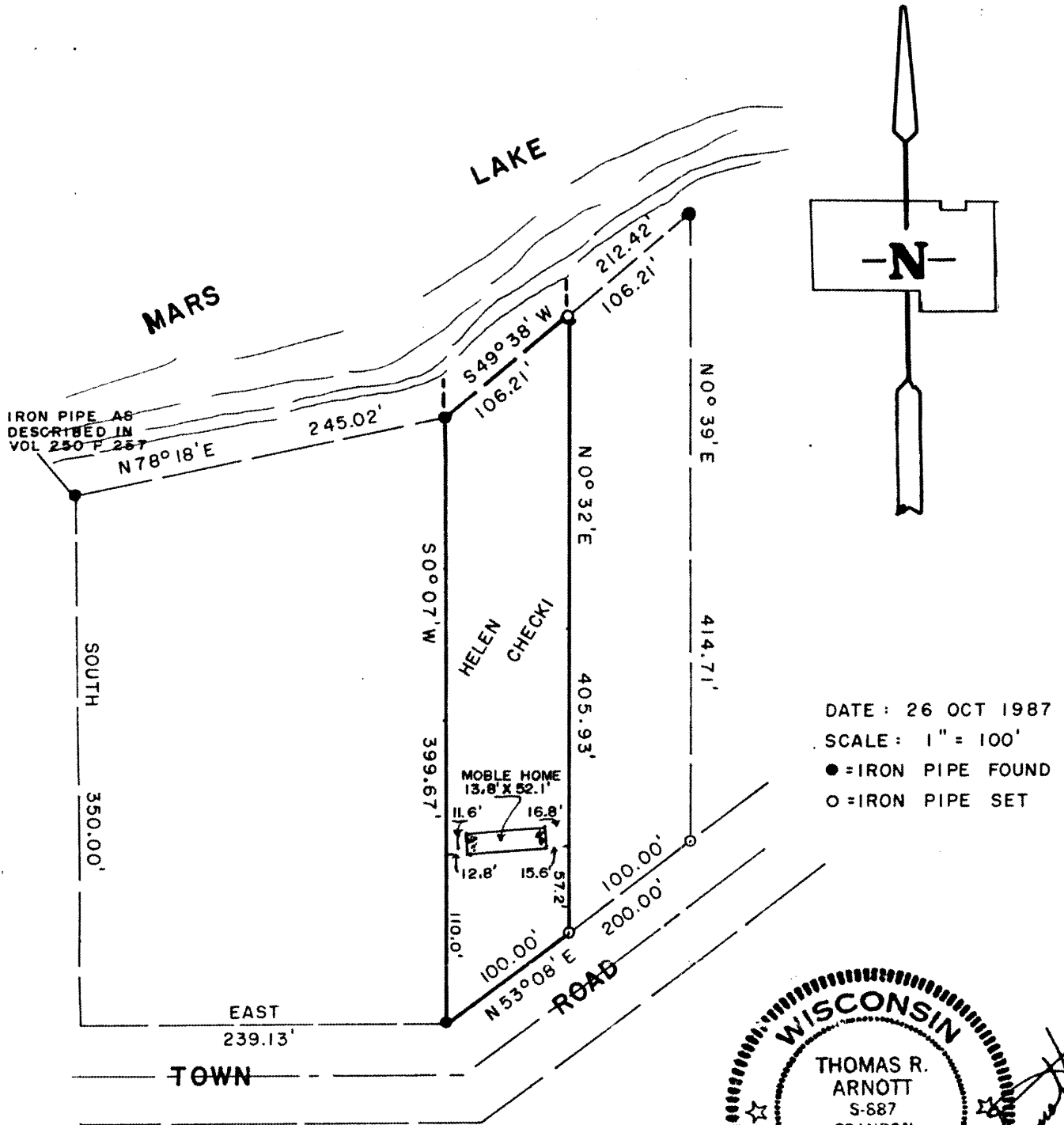
NOV 2 1987

ONEIDA CO. PLANNING & ZONING

L603

MAP OF SURVEY FOR HELEN CHECKI

PART OF THE NW1/4 - NE1/4, SEC. 30, T36N, R11E, TOWN OF MONICO, ONEIDA COUNTY, WISCONSIN.



WISCONSIN
 LAND SURVEYOR
 THOMAS R. ARNOTT
 S-887
 CRANDON WIS.
Thomas R. Arnott
 26 OCT 1987

L603

L603