

② N<sup>1</sup>/<sub>4</sub> Sec 5 Drove 1<sup>3</sup>/<sub>4</sub>" I.P. & found post. Gray boulder (12" x 12")  
 North - 49 ch; Gray Boulder 6" x 6" - N 40° W - 82 ch (Found 5/18/34)  
 2" I.P., found old post. PN (opp.) 8" - S 25° W - 0.870; PN 7" - N 37° E -  
 1.182 ch; PJ N 30° W - 2.588 ch. (Wis. Vally Imp. 1938) (Found 2" I.P. No B's. Vissers - 12-83)

③ N<sup>1</sup>/<sub>4</sub> NW<sup>1</sup>/<sub>4</sub>

RECEIVED & FILED	<b>L 609</b>
Orinda County Surveyor's Office	
Date	1/5/88
By	MR
CCS Area #	

4 NW Cor. Sec 5 (Post found. Conelets "11411" in NW  
Wis. Valley Imp. 1938) Found cone post just on west edge of N-S driveway (Vissers 12-83)

5) W 1/4 Sec 5 at 11.836 south of NW Cor. a 2" I.P. PW 18" - S32°W -  
0.409 ch.; PW 21" - S69°E - 0.591 ch. (Wis. Valley Imp. 1938) (Found pipe No BTs  
Vissers 12-83)

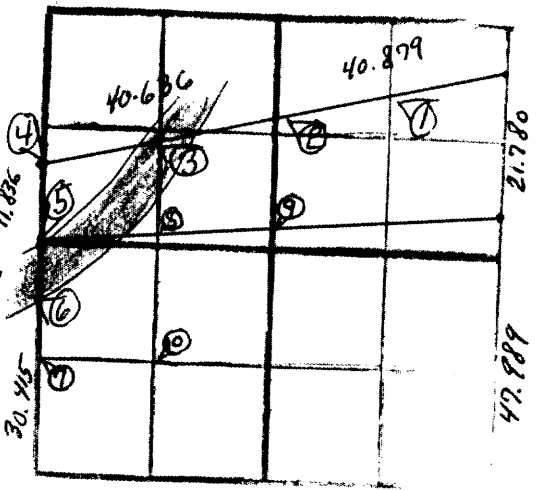
6) Meeker Cor. - West Line - South of Wisconsin River at 9.512 south of W 1/4  
Cor of 30.415 north of SW Cor. found 12" - S68°W - 0.303 ch.; PW 12"  
S11°E - 0.409 ch. (Wis. Valley Imp. 1938) (Found pipe No BTs Vissers 12-83)

- ⑦ W $\frac{1}{4}$ -SW $\frac{1}{4}$  Set 1 $\frac{1}{4}$ " Iron Pipe BTs. PJ 7" S 40°W 23.60', MS 5" S 50°E 23.50' (Vissers 12-83)
- ⑧ CW  $\frac{1}{16}$  Set 1 $\frac{1}{4}$ " Iron Pipe BTs. PJ 10" S 10°E 25.20', PJ 12" S 74°W 42.10' (Vissers 12-83)
- ⑨ C  $\frac{1}{4}$ -5 Set 1 $\frac{1}{4}$ " Iron Pipe BTs. PR 6" S 63°E 22.50', PR 6" S 16°W 52.45' (Vissers 12-83)
- ⑩ SW  $\frac{1}{16}$  Set 1 $\frac{1}{4}$ " Iron Pipe BTs. OR 12" S 54°E 32.45', PW 14" N 05°E 60.55' (Vissers 12-83) Cor. is Approx. 155' West of Woods road.

- ⑦ W<sup>1</sup>/<sub>4</sub>-SW<sup>1</sup>/<sub>4</sub> Set 1<sup>1</sup>/<sub>4</sub>" Iron Pipe BTs. PJ 7" S 40°W 23.60', MS 5" S 50°E 23.50' (Vissers 12-83)
- ⑧ CW <sup>1</sup>/<sub>16</sub> Set 1<sup>1</sup>/<sub>4</sub>" Iron Pipe BTs. PJ 10" S 10°E 25.20', PJ 12" S 74°W 42.10' (Vissers 12-83)
- ⑨ C <sup>1</sup>/<sub>4</sub>-S Set 1<sup>1</sup>/<sub>4</sub>" Iron Pipe BTs. PR 6" S 63°E 27.50', PR 6" S 16°W 52.45' (Vissers 12-83)
- ⑩ SW <sup>1</sup>/<sub>16</sub> Set 1<sup>1</sup>/<sub>4</sub>" Iron Pipe BTs. OR 12" S 54°E 32.45', PW 14" N 05°E 60.55' (Vissers 12-83) Cor. is approx. 155' West of woods road.

SEC. 5 T. 39 N. R. 9 W.

① N<sup>1</sup>/<sub>4</sub> NE<sup>1</sup>/<sub>4</sub>



② N<sup>1</sup>/<sub>4</sub> Sec 5 Drove 1<sup>3</sup>/<sub>4</sub>" I.P. & find post. Gray boulder (12" x 12")  
 North - 49 ch; Gray Boulder 6" x 6" - N40° W - 82 ch (Hall 5/18/34)  
 2" I.P., found old post. PH (stps.) 8" - S25° W - 0.870; PH 7" - N39° E -  
 1.182 ch; PJ N 30° W - 2.588 ch. (Wis. Vally Imp. 1938) (Found 2" I.P. No B's. Vissers - 12-83)

③ N<sup>1</sup>/<sub>4</sub> NW<sup>1</sup>/<sub>4</sub>

④ NW Cor. sec 5 Post found. Concrete Mon. No 137.  
(Wis. Valley Imp. 1938) Found cone post just on west edge of N-S driveway (Vissers 12-83)

⑤ W 1/4 sec 5 at 11.836 south of NW Cor. a 2" I.P. PW 18" - S32°W -  
0.409 ch.; PW 21" - S69°E - 0.591 ch. (Wis. Valley Imp. 1938) (Found pipe No 875  
Vissers 12-83)

⑥ Monter Cor. - West 1/2 - south of Wisconsin River at 9.512 south of W 1/4  
Cor of 30.415 north of SW Cor. found 12" - S68°W - 0.303 ch.; PW 12"  
S11°E - 0.409 ch. (Wis. Valley Imp. 1938) (Found pipe No 875 Vissers 12-83)