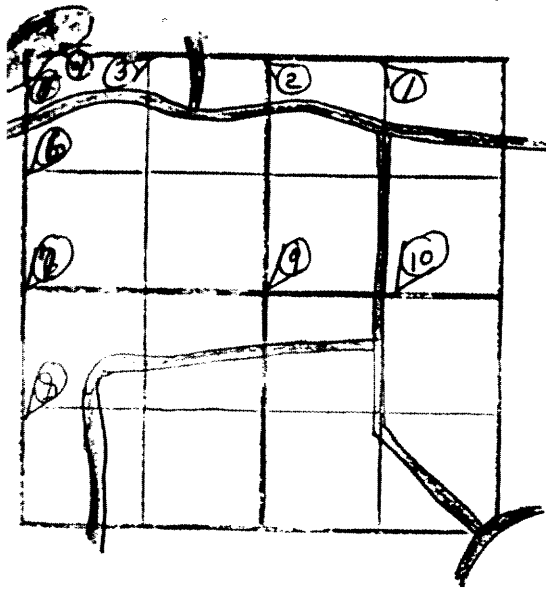


SEC. 19 T. 39 N. R. 9 E W.

① N<sup>1</sup>/<sub>4</sub> NE<sup>1</sup>/<sub>4</sub>

Would be at 1895 (~~1897~~ 10/18/93)

L628



② N<sup>1</sup>/<sub>4</sub> Sec 19 at 39.80 east of NE Cor. Point 14" - N 79° E - 0.247 ch.;  
 Point 9" - N 15° E - 0.285 ch. (Over 10/18/93)

③ N<sup>1</sup>/<sub>4</sub> NW<sup>1</sup>/<sub>4</sub>

RECEIVED & FILED R-289  
 Oneida County Surveyor's Office  
 Date... 1/5/88  
 By... M.R.  
 OCS Area #.....

4) Meander Cor. - North line - West of Clear at 68.58 west of NE Cor  
(Orig. 68.74). At 700 east & 1.25 north of orig. MC. on west line, south of  
Clear Lake set MC. PN 22" - S31°W - 0040 d.; Pine 10" - S47°W - 0140 d.  
(over 10/18/93)

5) Meander Cor. - West line - South of Clear Lake OBT. Birch 9" - S24°E - 23.  
Birch (std.) S19½°W - 30 (other orig is Birch 9" - S9½°W - 40) (over 10/18/93)

⑥ W¼ NW¼

SW 1/4 Sec 19

⑧ W 1/4 SW 1/4

⑨ Cor. Sec 19

	28.82	
36.34	40.74	
42.39	44.82	40.49

Point 10" - N 70° W - 0.210 ch.; Point 10" - S 15° E - 0.355 ch. (Don #10/18/93)

N<sup>1</sup>/<sub>4</sub> SE<sup>1</sup>/<sub>4</sub>      Point 13" - N39°E - 15 (Down 10/18/93)