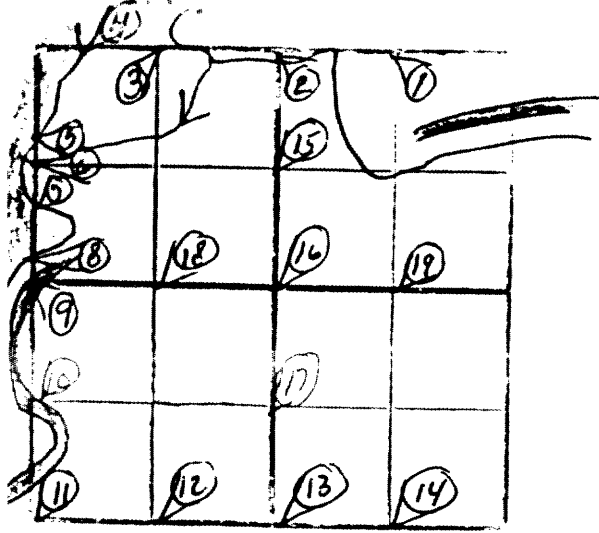


Sl 27 39 9

L631

① N¹/₄ NE¹/₄ at ~~40.35~~^{20.35} (Graham) PH (opt.) 15"
S 22° W - 0.975; PH (opt.) 14" - N 16° W - 0.212
(Don 10/18/93) at 21.080 PH 10" - S 33° W - 0.360 ch;
PH 8" - S 44° E - 1.930 ch. (Jg 1952)



② N¹/₄ Sec 27 at 40.70 west of NE cor. (Graham) N 6m. 7" - N 12° W
0.135 ch.; Aspen 7" - S 34° W - 18 (Don 10/18/93) at 42.171 each way set 1"
I.P. Aspen 6" - N 50° W - 0.690 ch; Balsom 5" - N 33° E - 0.570 ch (Jg 1952)

③ N¹/₄ NW¹/₄ at 21.086 set 1" I.P. - Aspen 8" - N 26° E - 0.390 ch.
(Jg 1952)

RECEIVED & FILED	L631
Onida County Surveyor's Office	
Date	1/5/88
By	M.A.
CCS Area #	

④ Meander Cor. - North Line - East of Chain Lake at

76.62 west of NE Cor fall 31 $\frac{1}{2}$ south of Graham's MC. PM 12" N10°E - 6 M
(Don 10/18/93)

⑤ Meander Cor. - West Line - South of Bay of Chain Lake

⑥ W $\frac{1}{4}$ SW $\frac{1}{4}$

~~⑦ Meander Cor. - West Line - South of Bay of Chain Lake~~

⑧ Meander Cor. - West Line - North of Bay of Chain Lake at 8.65 north of #8
(Don 3/17/92)

⑧ Meadow Cor - West line - South of Chain Lake at 38.86 north of SW cor
 at 38.86⁺ north of SW cor. found \odot O.B.T. Corner falls 2' in lake.
 New B.T. PW (exp.) 24" - S40°E - 0.280 ch. (Hall 11/28/31) Cor. is 3.69 ch
 north of $\frac{1}{4}$ Cor (Jlg. 1952)

⑨ W $\frac{1}{4}$ Sec 27 at 35.31 north of SW cor & 3.69 south of MC, $\frac{1}{4}$
 Cor. by Maine PW (exp.) 24" - S40°E - 0.280 ch. (Jlg 1952)

⑩ W $\frac{1}{4}$ SW $\frac{1}{4}$

⑪ SW cor. sec. 27 Found remains of ogh beaver. Nothing near for new
 B.T. Set large ~~per~~ post (Hall 11/28/31) Sec. Cor. perpetuated by B.L.M. (Jlg 5)

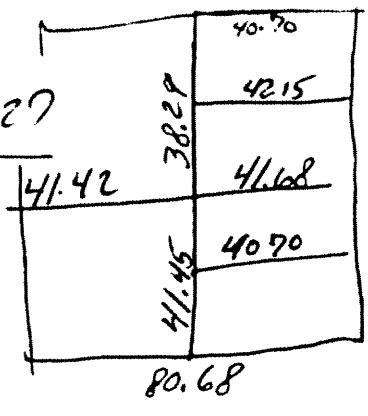
⑫ S 1/4 SE 1/4

⑬ S 1/4 sec. 27 Hemlock 10" - S 57° W - 28; Cedar 11" - N 13° E - 0.137
(Dorr 10/18/93) at 40.52 end way set 1" I.P. Cedar 9" - N 18° E - 1.130 ch.;
Balsam 6" - S 53° E - 0.600 ch. (Jlg 1952)

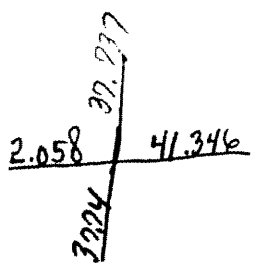
⑭ S 1/4 SE 1/4

⑮ W 1/4 NE 1/4, PN (sp.) 15" - S 22° W - 0.0975; PN 14' - N 16° W - ~~0.272~~ 0.212
(Dorr 10/18/93)

⑩ ctr sec 27



Per 14" - N5°E - 0.895 ch; from 14" - N21°E
0.430 ch. (Don 10/18/93)



1" I.P. PN 10" - N97°W - 1.265 ch; PW 8" - N17°E - 1.170 ch (Jg 1952)

⑪ W 1/4 SE 1/4 Per (app.) 30" - N51°W - 19 (Don 10/18/93)

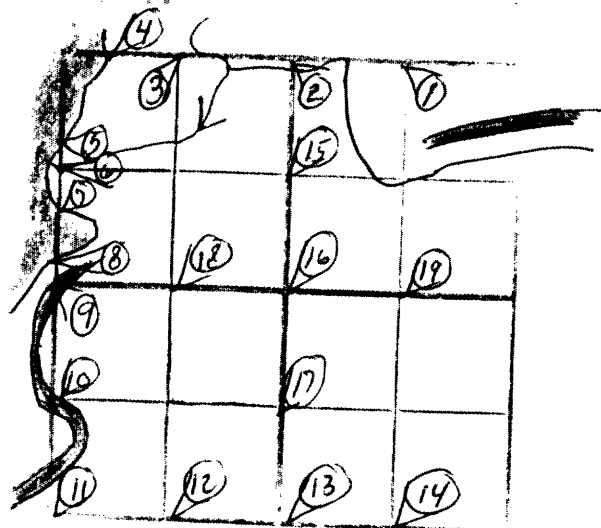
⑫ N 1/4 SW 1/4 at 21.029 East West of 18.261 from north set 1" I.P.
upper 6" - N29°E - 0.360 ch; PN (app.) 20" - S42°W - 0.230 ch. (Jg 1952)

(19) N¹/₄ SE¹/₄ at 20.673 ~~at 1" IP~~ and of west at 1" IP
24 per 8" - N25°E - 0.520 ch; BW 9" - S27°W - 0.810 ch. (Jg 1952)

SE 27 39 9

L 631

① N¹/₄ NE¹/₄ at ~~40.35~~^{20.35} (Trakom) PH (exp.) 15
 S 22° W - 0.975; PH (exp.) 14" - N 16° W - 0.212
 (Dorr 10/18/93) at 21.080 PH 10" - S 33° W - ~~0.360~~
 0.360 ch; PH 8" - S 44° E - 1.930 ch. (Dg 1952)^{IP. e cor / map}



② N¹/₄ Sec 27 at 40.70 west of NE cor. (Trakom) Hem. 7" - N 12° W
 0.135 ch.; Maple 7" - S 34° W - 18 (Dorr 10/18/93) at 42.171 each way set 1"
 I.P. Aspen 6" - N 50° W - 0.690 ch; Balsom 5" - N 33° E - 0.570 ch (Dg 1952)

③ N¹/₄ NW¹/₄ at 21.086 set 1" I.P. - Aspen 8" - N 26° E - 0.390 ch.
 (Dg 1952)

④ Meander Cor. - North line - East of Chain Lake at

76.62 west of NE Cor fell $3\frac{1}{2}$ south of Grahams MC. PM 12" - N10°E - 6 1/4
(Dorr 10/18/93)

⑤ Meander Cor. - West line - South of Bay of Chain Lake

⑥ W 1/4 SW 1/4

~~⑦ Meander Cor. - West line - North of Bay of Chain Lake~~

⑧ Meander Cor. - West line - North of Bay of Chain Lake at 8.65 north of #8
(Dorr 3/17/92)

⑧ Meander Cor - West side - South of Chain Lake at 38.86 north of SW cor
 @ Cor 3117192)

at 38.86+ north of SW cor. found ~~an~~ O.B.T. Corner falls 2' in lake.

New B.T. PW (sep.) 24" - S40°E - 0.280 ch. (Hall 11/28/31) Cor. is 3.69 ch
 north of 1/4 Cor (Jlg. 1952)

⑨ W 1/4 Sec 27 at 35.31 north of SW cor & 3.69 south of MC, 1/4

Cor. by Maine PW (sep.) 24" - S40°E - 0.280 ch. (Jlg 1952)

Map by M. Rompert¹⁹⁸⁶ shows i.p. replaced w/ Co. Alum and note that location
 commonly used + accepted but may be in wrong location

⑩ W 1/4 SW 1/4

⑪ SW Cor. Sec. 27 Found remains of ogh bearings. Nothing near former
 B.T. Set large ~~and~~ post (Hall 11/28/31) Sec. Cor. perpetuated by B.L.M. (Jlg 52)

GLU Resurvey 1952 set b.c. in place of cedar post. BT^s Spruce 4" N 61³/₄° E 27 1/2 ft, T 5" S 8³/₄° E 62 ft
 T 5" S 19³/₄° W 72 ft., FB 5" N 56³/₄° W 15 ft.

⑫ S¹/₄ SE¹/₄

⑬ S¹/₄ sec. 27 Hemlock 10" - S 57° W - 23; Cedar 11" - N 13° E - 0.137
(Dorr 10/18/43) at 40.52 rock way set 1" I.P. Cedar 9" - N 18° E - 1.130 ch.;
Balsam 6" - S 53° E - 0.600 ch. (Jlg 1952) ~~6.20' bearing the set, property and~~
~~corner set to S. and references to S. 25' N. 11° 30' E. 11.23' W~~
~~55' N. 55' E. 32' N. 11° 30' E. 51.03' E. 0.25' ch. (this point set~~
~~by ~~Donald C. Johnson~~ 1944)~~

⑭ S¹/₄ SE¹/₄

⑮ W¹/₄ NE¹/₄, PN (dep.) 15" - S 22° W - 0.0975; PN 14" - N 16° W - ~~0.272~~ 0.212
(Dorr 10/18/43)