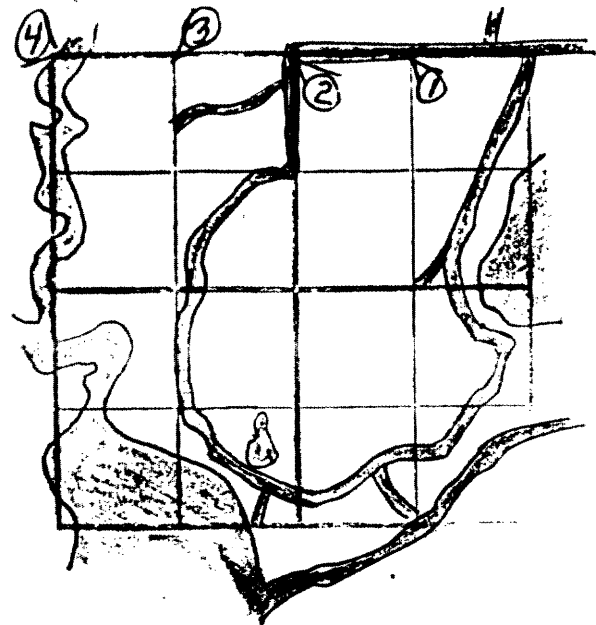
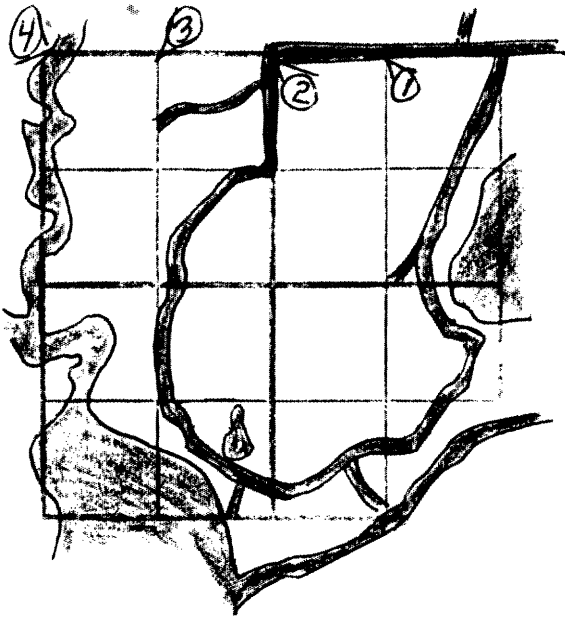


SEC. 32 T. 34 N. R. 9 E W.



RECEIVED & FILED # 636
Ocala County Survey Office
Date 1/5/88
By M.R.
OCS Area #



② N¹/₄ 32 - GLO Resurvey, 1950 (at 42.77 ch west of SE 32)
 replaced found i-p. (recognized as corner)
 with a GLO b.c.; BT^s PW 18" S57°E 86 lks, PN 18" N38°W 19 lks.
 Reset the found i-p. along side b.c. pipe, made BT^s PN 14" N84³/₄°W 41¹/₂ lks)
 PN 7" S41°W 24¹/₂ lks. (GLO, 1950)
 found PN 27" N39°W 11.92' (nail), twin MR 14" S42°W 68.20' (nail)
 (found b.c. w/ carsonite post)
 made BT^s PN 18" S59°E 131.0'; BW 10" N61°W 50.46'; curve on road
 reduce recently. (Seymour 11/25/88)

④ NW 32 - at 43.26 ch west of N¹/₄ 32. found iron pipe + BT^s PJ 11" N60°W 10 lks,
 fallen PJ 12" S11°E 25¹/₂ lks. pipe is recognized as correct by locals
 so replaced with GLO b.c. w/ iron reset alongside. New BT^s
 BW 8" East 23¹/₂ lks.) PJ 5" S67°W 18¹/₂ lks, PJ 11" N60°W 10 lks