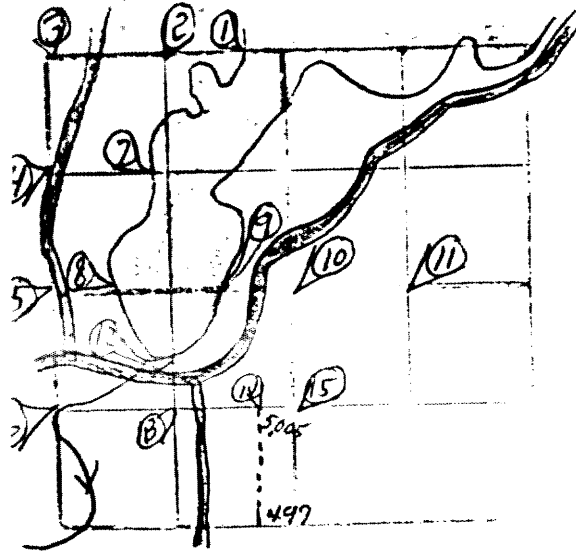


L671.

SEC. 26 T. 39 N. R. 8 W.



① Marker Cr. - North Line - West of Nekoma

at 33.021 - W.C.D. pipe 10' feet west of lake.
MR 5" - N 81° W - 0.301 ch.; PN 16" - N 11° W -
0.883 ch. (Jlg 1964)

RECEIVED & FILED **L671.**
 Onida County Surveyor's Office
 Date **JAN. 1 8 1969**
 By **MAK**
 OCS Area #

② N 1/4 NW 1/4 at 19.237 1/4 at 1" T.P. PN 13" - S 58° E - 1.235 ch.; BW 8" - S 44° W
- 0.977 ch (Jlg 1964)

③ NE Cor. Sec. 26 at W.C.D. pipe in place of old scrubbed wood post. Distances
south to W 1/4 Cr & east to MC. are close. B.T. present as per 6" - N 73° W - 0.123
ch; New B.T. PN 6" - N 31° E - 0.568 ch.; PN 6" - S 42° E - 1.399 ch (Jlg 1964)

L671.

L671.

④ W¹/₄ NW¹/₄ at 20.000 1/2 a 1 1/4" well point just west of
west edge of road. PN 4" - S 68° E - 1.186 ch. OR 5" - N 10° W - 1.138 ch.
(Jlg 1964)

⑤ W¹/₄ Sec 26 at 40.063 north of SW cor & 40.001 south of NW cor.
set w.c.p. pipe in flow of old broken off scrubbed wood post. B.T. present PW 16" -
S 34° W - 0.341 ch.; PN 12" - ^{gone in 1977} N 15° E - 0.102 ch. New B.T. Tam 18" - S 82° E -
0.879 ch. Corner is 16 1/2 feet west of E of road. (Jlg 1964) PW 16" + Tam 13" still there alive,
New B.T. Bw 8" S 23° E 0.303 ch (Seymour 8/24/77)

⑥ W¹/₄ SW¹/₄ at 20.035 set 1" iron pipe in center of 10' wide
creek ~~running~~ running NW/SE from corner but flows southerly. PW 10" -
N 45° E - 0.470 ch.; PN 6" - S 89° W - 1.229 ch. (Jlg 64)

L671.

⑦ Meander Cor. - North 1/8 line - west of Makornis

at 15-06 east of from W 1/4 NW 1/4 of 66⁺ back west of lake shore set 1" I.P.
 PW 18" - S 74° W - 0.678 ch; OR 7" - N 30° W - 0.544 ch. (Jlg 1964)

⑧ Meander Cor. - E/W 1/4 line - West of Makornis LA 1" I.P. PN 11"

S 31° W - 0.392; PN 10" - S 33° E - 0.724 ch - shore of lake is Northeast 7 feet.
 (Jlg 1964) PN 11" + PN 10" + 1" pipe still there, 4x4 granite is now on east edge of pipe (Seymour 8-24-77)

⑨ Meander Cor. - E/W 1/4 line - East of Makornis LA W.C.D. pipe in wet, boggy

area PW 22" - S 20° W - 1.170 ch; Tam 15" - S 55° E - 1.586 ch. (Jlg 64)

PW 22" + Tam 15" now cut off stps, pipe was pushed over lying on marsh, reset from BT stps,

New BT PN 14" S 27° E 0.561 ch (Seymour, 8-24-77)

(10) Cl. Sec 26 lat etc. Sec. 26 in wet boggy area.
SB3" - S51°W - 0.763 ch.; Tom 1" - N78°W - 0.949 ch. (Jlg 1964)
Both BT's + 2" WCO Brass cap there (Seymour 8-24-77)

(11) N 1/4 SE 1/4 1" iron pipe in low country. PW 5" - S32°E - 0.147 ch.;
PW 6" - S71°E - 0.455 ch. (Jlg 1964) Both BT's + I.P. there (Seymour 8-24-77)

(12) Meander cor. - W 1/8 line - South of Makornis, 1" iron pipe 6.769 ch.
southerly from 1/8 cor 0.57± south of lake PN 16" - S82°E 0.129 ch.;
PN 16" - S4°W - 0.347 ch. (Jlg 1964)

(13) Cl. SW 1/4 1" iron pipe. PW 6" - N77°W - 0.113 ch.; PW 9" -
N18°W - 0.448 ch. (Jlg 1964)

L271.

Ac 26-39 f

14) Lot 62 at 5.005 in westerly from W¹/₄ SE¹/₄ a 1" I.P.
 PJ 5" - N44°E - 0.608 ch.; PW 6" - S50°E - 1.109 ch. (Sly 67)

15) W¹/₄ SE¹/₄ 1" iron post in end corner bed from West
 (Sly 1964)

L271.

L271.