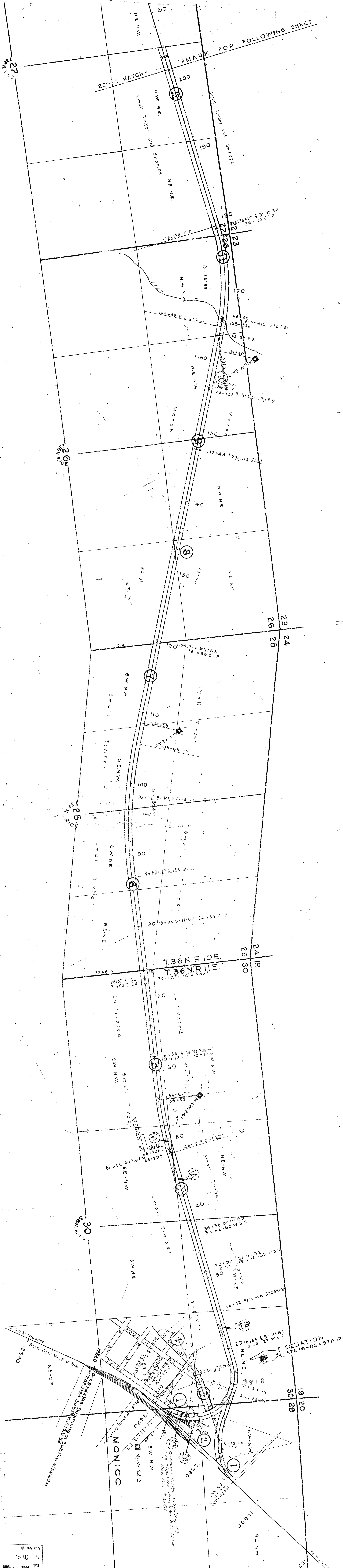


Printed by R. F. & O. G. 10/12/16
 Checked by R. F. & O. G. 10/12/16



NO.	DESCRIPTION	DATE	BY	REVISIONS
1	As Shown	1917	W. H. ...	
2	...	1918	...	
3	...	1919	...	
4	...	1920	...	
5	...	1921	...	
6	...	1922	...	
7	...	1923	...	
8	...	1924	...	
9	...	1925	...	
10	...	1926	...	
11	...	1927	...	
12	...	1928	...	
13	...	1929	...	
14	...	1930	...	
15	...	1931	...	
16	...	1932	...	
17	...	1933	...	
18	...	1934	...	
19	...	1935	...	
20	...	1936	...	
21	...	1937	...	
22	...	1938	...	
23	...	1939	...	
24	...	1940	...	
25	...	1941	...	
26	...	1942	...	
27	...	1943	...	
28	...	1944	...	
29	...	1945	...	
30	...	1946	...	
31	...	1947	...	
32	...	1948	...	
33	...	1949	...	
34	...	1950	...	
35	...	1951	...	
36	...	1952	...	
37	...	1953	...	
38	...	1954	...	
39	...	1955	...	
40	...	1956	...	
41	...	1957	...	
42	...	1958	...	
43	...	1959	...	
44	...	1960	...	
45	...	1961	...	
46	...	1962	...	
47	...	1963	...	
48	...	1964	...	
49	...	1965	...	
50	...	1966	...	
51	...	1967	...	
52	...	1968	...	
53	...	1969	...	
54	...	1970	...	
55	...	1971	...	
56	...	1972	...	
57	...	1973	...	
58	...	1974	...	
59	...	1975	...	
60	...	1976	...	
61	...	1977	...	
62	...	1978	...	
63	...	1979	...	
64	...	1980	...	
65	...	1981	...	
66	...	1982	...	
67	...	1983	...	
68	...	1984	...	
69	...	1985	...	
70	...	1986	...	
71	...	1987	...	
72	...	1988	...	
73	...	1989	...	
74	...	1990	...	
75	...	1991	...	
76	...	1992	...	
77	...	1993	...	
78	...	1994	...	
79	...	1995	...	
80	...	1996	...	
81	...	1997	...	
82	...	1998	...	
83	...	1999	...	
84	...	2000	...	

STATE OF ILLINOIS
 COUNTY OF COOK
 I, the undersigned, being a duly licensed Professional Engineer in the State of Illinois, do hereby certify that the foregoing is a true and correct copy of the original as shown to me by the engineer in charge of the same, and that the same is a true and correct copy of the original as shown to me by the engineer in charge of the same, and that the same is a true and correct copy of the original as shown to me by the engineer in charge of the same.

RIGHT OF WAY AND TRACK MAP
 CHICAGO AND NORTH-WESTERN RAILWAY
 OPERATED BY THE
 C. & N-W. RY. CO.
 ASHLAND DIVISION
 MONICO, WIS. TO HURLEY, WIS.

SCALE: H.N. = 400 FT.
 JUNE 30, 1917.
 CHICAGO, ILL.

