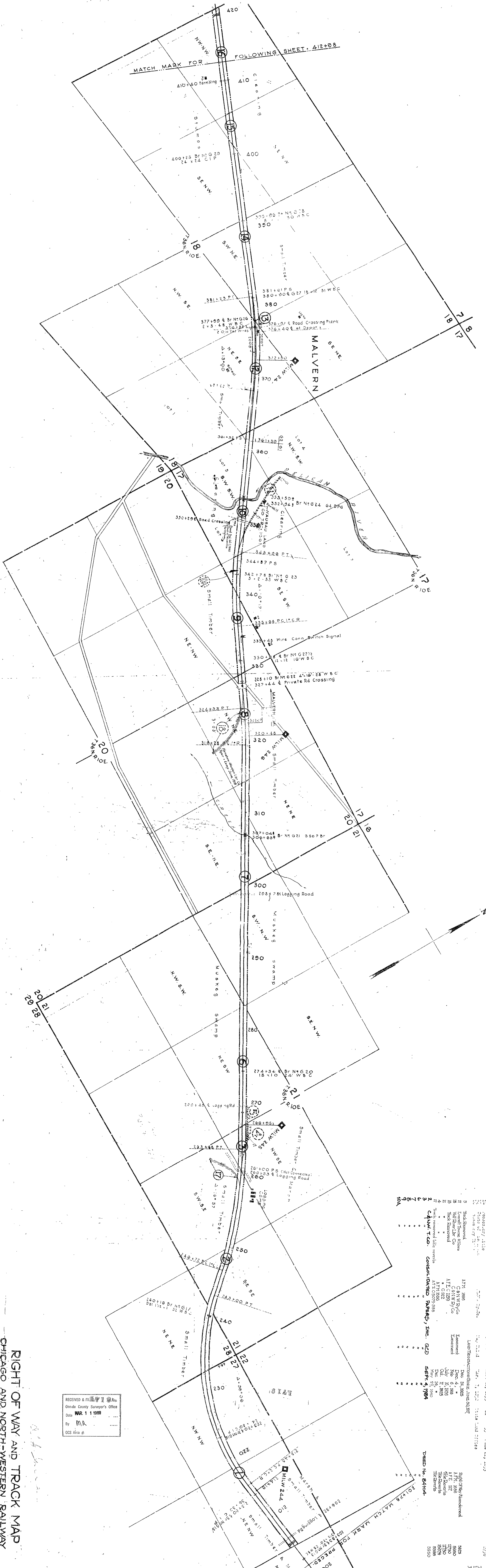


Printed by P.T.S. Co. Inc.
 1400 N. LaSalle St.
 Chicago, Ill. 60610



Station	Description	Reference	Area
180	Track removed into woods	Consolidated Park, Inc. QCD	1.47
185	Track removed into woods	Consolidated Park, Inc. QCD	1.47
190	Track removed into woods	Consolidated Park, Inc. QCD	1.47
195	Track removed into woods	Consolidated Park, Inc. QCD	1.47
200	Track removed into woods	Consolidated Park, Inc. QCD	1.47
205	Track removed into woods	Consolidated Park, Inc. QCD	1.47
210	Track removed into woods	Consolidated Park, Inc. QCD	1.47
215	Track removed into woods	Consolidated Park, Inc. QCD	1.47
220	Track removed into woods	Consolidated Park, Inc. QCD	1.47
225	Track removed into woods	Consolidated Park, Inc. QCD	1.47
230	Track removed into woods	Consolidated Park, Inc. QCD	1.47
235	Track removed into woods	Consolidated Park, Inc. QCD	1.47
240	Track removed into woods	Consolidated Park, Inc. QCD	1.47

RECEIVED & FILED
 Onondaga County Surveyor's Office
 Date MAR 11 1988
 By MR
 CCS Area #

Sheet No. 18 of 18
 From Survey Station
 To Survey Station
 Valuation Engineer
 C. & N.W. Ry.
 CHIEF ENGINEER
 CHICAGO, ILL.

RIGHT OF WAY AND TRACK MAP
 CHICAGO AND NORTH-WESTERN RAILWAY
 OPERATED BY THE
 MALVERN
 C. & N.W. RY. CO.
 ASHLAND DIVISION
 MONICO, WIS. TO HURLEY, WIS.
 OCEIDA COUNTY

SCALE: 1-IN. = 400 FT.
 OFFICE OF CHIEF ENGINEER
 JUNE 30, 1917.

