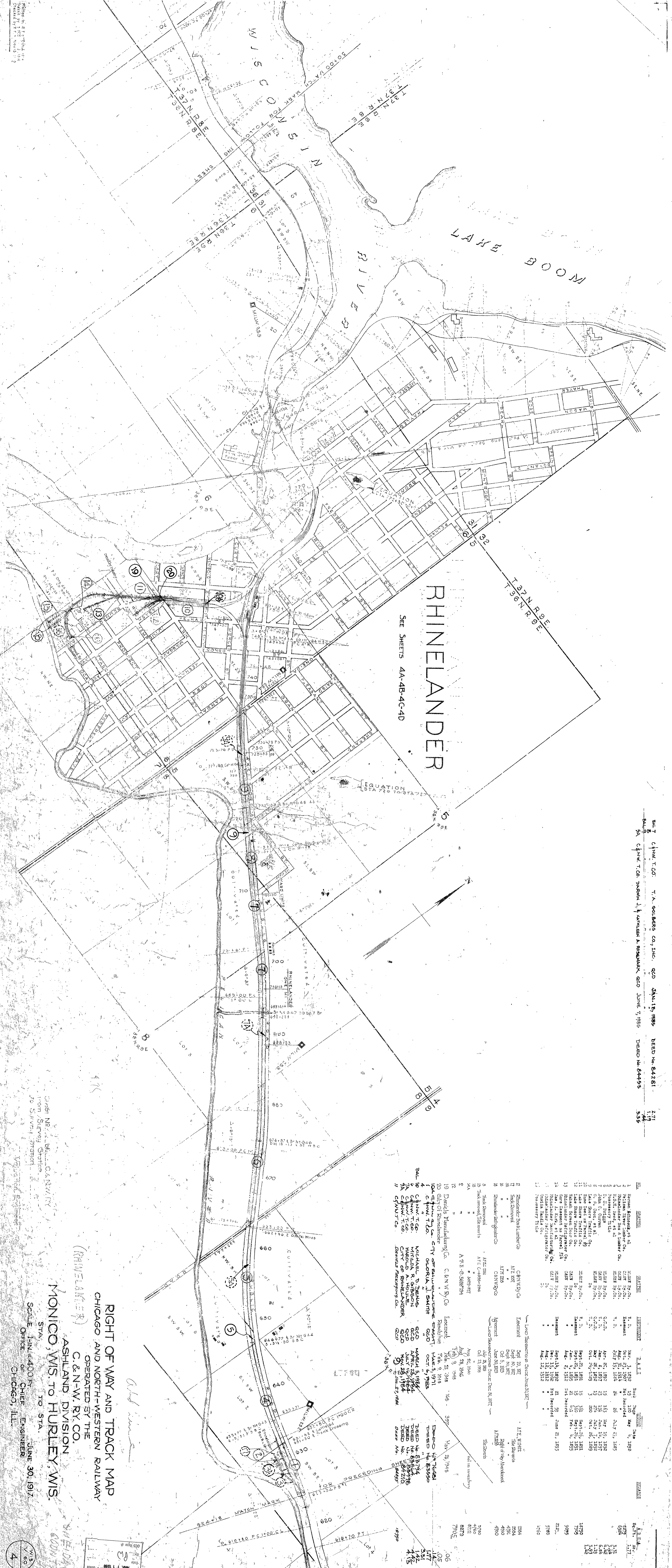


Vol. 7 of W. T. CO. T. A. SOLBERG CO., INC. QCD JAN. 13, 1935 DEED No. 84281
 Vol. 8 of W. T. CO. DAWSON J. H. KATHELMAN A. ROSEWALK QCD JUNE 7, 1935 DEED No. 84458
 2.71
 1.19
 3.35

RHINELANDER

SEE SHEETS 4A-4B-4C-4D



| NO. | SECTION | OWNER | ACQUISITION | DATE | RECORD | REMARKS |
|-----|---------|------------------------|-------------|---------------|--------------------|---------------|
| 1 | 1 | Bohannan, John, et al. | Warrant | Mar. 31, 1892 | Book 120, Page 180 | May 4, 1892 |
| 2 | 2 | William Shaw, et al. | Warrant | Mar. 27, 1897 | Not recorded | |
| 3 | 3 | Edmund, et al. | Warrant | July 15, 1894 | 24 | July 23, 1895 |
| 4 | 4 | Edmund, et al. | Warrant | July 15, 1894 | 24 | July 23, 1895 |
| 5 | 5 | Edmund, et al. | Warrant | July 15, 1894 | 24 | July 23, 1895 |
| 6 | 6 | Edmund, et al. | Warrant | July 15, 1894 | 24 | July 23, 1895 |
| 7 | 7 | Edmund, et al. | Warrant | July 15, 1894 | 24 | July 23, 1895 |
| 8 | 8 | Edmund, et al. | Warrant | July 15, 1894 | 24 | July 23, 1895 |
| 9 | 9 | Edmund, et al. | Warrant | July 15, 1894 | 24 | July 23, 1895 |
| 10 | 10 | Edmund, et al. | Warrant | July 15, 1894 | 24 | July 23, 1895 |
| 11 | 11 | Edmund, et al. | Warrant | July 15, 1894 | 24 | July 23, 1895 |
| 12 | 12 | Edmund, et al. | Warrant | July 15, 1894 | 24 | July 23, 1895 |
| 13 | 13 | Edmund, et al. | Warrant | July 15, 1894 | 24 | July 23, 1895 |
| 14 | 14 | Edmund, et al. | Warrant | July 15, 1894 | 24 | July 23, 1895 |
| 15 | 15 | Edmund, et al. | Warrant | July 15, 1894 | 24 | July 23, 1895 |
| 16 | 16 | Edmund, et al. | Warrant | July 15, 1894 | 24 | July 23, 1895 |
| 17 | 17 | Edmund, et al. | Warrant | July 15, 1894 | 24 | July 23, 1895 |
| 18 | 18 | Edmund, et al. | Warrant | July 15, 1894 | 24 | July 23, 1895 |
| 19 | 19 | Edmund, et al. | Warrant | July 15, 1894 | 24 | July 23, 1895 |
| 20 | 20 | Edmund, et al. | Warrant | July 15, 1894 | 24 | July 23, 1895 |
| 21 | 21 | Edmund, et al. | Warrant | July 15, 1894 | 24 | July 23, 1895 |
| 22 | 22 | Edmund, et al. | Warrant | July 15, 1894 | 24 | July 23, 1895 |
| 23 | 23 | Edmund, et al. | Warrant | July 15, 1894 | 24 | July 23, 1895 |
| 24 | 24 | Edmund, et al. | Warrant | July 15, 1894 | 24 | July 23, 1895 |
| 25 | 25 | Edmund, et al. | Warrant | July 15, 1894 | 24 | July 23, 1895 |
| 26 | 26 | Edmund, et al. | Warrant | July 15, 1894 | 24 | July 23, 1895 |
| 27 | 27 | Edmund, et al. | Warrant | July 15, 1894 | 24 | July 23, 1895 |
| 28 | 28 | Edmund, et al. | Warrant | July 15, 1894 | 24 | July 23, 1895 |
| 29 | 29 | Edmund, et al. | Warrant | July 15, 1894 | 24 | July 23, 1895 |
| 30 | 30 | Edmund, et al. | Warrant | July 15, 1894 | 24 | July 23, 1895 |
| 31 | 31 | Edmund, et al. | Warrant | July 15, 1894 | 24 | July 23, 1895 |
| 32 | 32 | Edmund, et al. | Warrant | July 15, 1894 | 24 | July 23, 1895 |
| 33 | 33 | Edmund, et al. | Warrant | July 15, 1894 | 24 | July 23, 1895 |
| 34 | 34 | Edmund, et al. | Warrant | July 15, 1894 | 24 | July 23, 1895 |
| 35 | 35 | Edmund, et al. | Warrant | July 15, 1894 | 24 | July 23, 1895 |
| 36 | 36 | Edmund, et al. | Warrant | July 15, 1894 | 24 | July 23, 1895 |
| 37 | 37 | Edmund, et al. | Warrant | July 15, 1894 | 24 | July 23, 1895 |
| 38 | 38 | Edmund, et al. | Warrant | July 15, 1894 | 24 | July 23, 1895 |
| 39 | 39 | Edmund, et al. | Warrant | July 15, 1894 | 24 | July 23, 1895 |
| 40 | 40 | Edmund, et al. | Warrant | July 15, 1894 | 24 | July 23, 1895 |
| 41 | 41 | Edmund, et al. | Warrant | July 15, 1894 | 24 | July 23, 1895 |
| 42 | 42 | Edmund, et al. | Warrant | July 15, 1894 | 24 | July 23, 1895 |
| 43 | 43 | Edmund, et al. | Warrant | July 15, 1894 | 24 | July 23, 1895 |
| 44 | 44 | Edmund, et al. | Warrant | July 15, 1894 | 24 | July 23, 1895 |
| 45 | 45 | Edmund, et al. | Warrant | July 15, 1894 | 24 | July 23, 1895 |
| 46 | 46 | Edmund, et al. | Warrant | July 15, 1894 | 24 | July 23, 1895 |
| 47 | 47 | Edmund, et al. | Warrant | July 15, 1894 | 24 | July 23, 1895 |
| 48 | 48 | Edmund, et al. | Warrant | July 15, 1894 | 24 | July 23, 1895 |
| 49 | 49 | Edmund, et al. | Warrant | July 15, 1894 | 24 | July 23, 1895 |
| 50 | 50 | Edmund, et al. | Warrant | July 15, 1894 | 24 | July 23, 1895 |

Order No. 100 of C. & N. W. RY.
 from Survey Station 2
 to Survey Station 2
 CHIEF ENGINEER
 CHICAGO, ILL.

RIGHT OF WAY AND TRACK MAP
 CHICAGO AND NORTH-WESTERN RAILWAY
 OPERATED BY THE
 C. & N. W. RY. CO.
 ASHLAND DIVISION
 MONICO, WIS. TO HURLEY, WIS.

SCALE 1 IN. = 400 FT.
 JUNE 30, 1917

