

16 - C.N.W. Ry. Co.
 15 - C.N.W. Ry. Co.
 14 - C.N.W. Ry. Co.
 13 - C.N.W. Ry. Co.
 12 - C.N.W. Ry. Co.
 11 - C.N.W. Ry. Co.
 10 - C.N.W. Ry. Co.
 9 - C.N.W. Ry. Co.
 8 - C.N.W. Ry. Co.
 7 - C.N.W. Ry. Co.
 6 - C.N.W. Ry. Co.
 5 - C.N.W. Ry. Co.
 4 - C.N.W. Ry. Co.
 3 - C.N.W. Ry. Co.
 2 - C.N.W. Ry. Co.
 1 - C.N.W. Ry. Co.

1000
 900
 800
 700
 600
 500
 400
 300
 200
 100
 0
 -100
 -200
 -300
 -400
 -500
 -600
 -700
 -800
 -900
 -1000

1000
 900
 800
 700
 600
 500
 400
 300
 200
 100
 0
 -100
 -200
 -300
 -400
 -500
 -600
 -700
 -800
 -900
 -1000

1000
 900
 800
 700
 600
 500
 400
 300
 200
 100
 0
 -100
 -200
 -300
 -400
 -500
 -600
 -700
 -800
 -900
 -1000

1000
 900
 800
 700
 600
 500
 400
 300
 200
 100
 0
 -100
 -200
 -300
 -400
 -500
 -600
 -700
 -800
 -900
 -1000

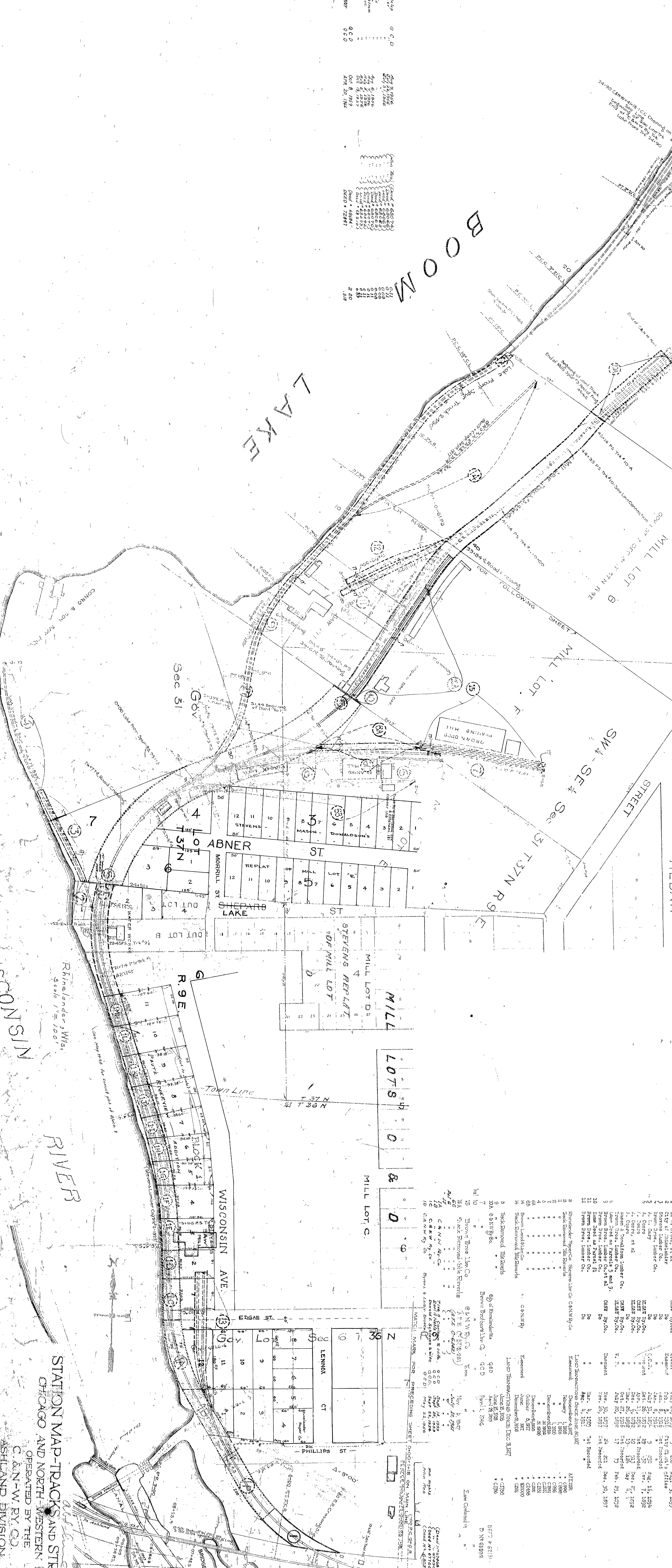
1000
 900
 800
 700
 600
 500
 400
 300
 200
 100
 0
 -100
 -200
 -300
 -400
 -500
 -600
 -700
 -800
 -900
 -1000

1000
 900
 800
 700
 600
 500
 400
 300
 200
 100
 0
 -100
 -200
 -300
 -400
 -500
 -600
 -700
 -800
 -900
 -1000

1000
 900
 800
 700
 600
 500
 400
 300
 200
 100
 0
 -100
 -200
 -300
 -400
 -500
 -600
 -700
 -800
 -900
 -1000

1000
 900
 800
 700
 600
 500
 400
 300
 200
 100
 0
 -100
 -200
 -300
 -400
 -500
 -600
 -700
 -800
 -900
 -1000

1000
 900
 800
 700
 600
 500
 400
 300
 200
 100
 0
 -100
 -200
 -300
 -400
 -500
 -600
 -700
 -800
 -900
 -1000



NO.	OWNER	DATE	RECORD	REMARKS
1	A. L. Johnson et al.	1877-78	1878	Original plat
2	Stevens Lumber Co.	1878-79	1879	Original plat
3	Stevens Lumber Co.	1879-80	1880	Original plat
4	Stevens Lumber Co.	1880-81	1881	Original plat
5	Stevens Lumber Co.	1881-82	1882	Original plat
6	Stevens Lumber Co.	1882-83	1883	Original plat
7	Stevens Lumber Co.	1883-84	1884	Original plat
8	Stevens Lumber Co.	1884-85	1885	Original plat
9	Stevens Lumber Co.	1885-86	1886	Original plat
10	Stevens Lumber Co.	1886-87	1887	Original plat
11	Stevens Lumber Co.	1887-88	1888	Original plat
12	Stevens Lumber Co.	1888-89	1889	Original plat
13	Stevens Lumber Co.	1889-90	1890	Original plat
14	Stevens Lumber Co.	1890-91	1891	Original plat
15	Stevens Lumber Co.	1891-92	1892	Original plat
16	Stevens Lumber Co.	1892-93	1893	Original plat
17	Stevens Lumber Co.	1893-94	1894	Original plat
18	Stevens Lumber Co.	1894-95	1895	Original plat
19	Stevens Lumber Co.	1895-96	1896	Original plat
20	Stevens Lumber Co.	1896-97	1897	Original plat
21	Stevens Lumber Co.	1897-98	1898	Original plat
22	Stevens Lumber Co.	1898-99	1899	Original plat
23	Stevens Lumber Co.	1899-00	1900	Original plat
24	Stevens Lumber Co.	1900-01	1901	Original plat
25	Stevens Lumber Co.	1901-02	1902	Original plat
26	Stevens Lumber Co.	1902-03	1903	Original plat
27	Stevens Lumber Co.	1903-04	1904	Original plat
28	Stevens Lumber Co.	1904-05	1905	Original plat
29	Stevens Lumber Co.	1905-06	1906	Original plat
30	Stevens Lumber Co.	1906-07	1907	Original plat
31	Stevens Lumber Co.	1907-08	1908	Original plat
32	Stevens Lumber Co.	1908-09	1909	Original plat
33	Stevens Lumber Co.	1909-10	1910	Original plat
34	Stevens Lumber Co.	1910-11	1911	Original plat
35	Stevens Lumber Co.	1911-12	1912	Original plat
36	Stevens Lumber Co.	1912-13	1913	Original plat
37	Stevens Lumber Co.	1913-14	1914	Original plat
38	Stevens Lumber Co.	1914-15	1915	Original plat
39	Stevens Lumber Co.	1915-16	1916	Original plat
40	Stevens Lumber Co.	1916-17	1917	Original plat
41	Stevens Lumber Co.	1917-18	1918	Original plat
42	Stevens Lumber Co.	1918-19	1919	Original plat
43	Stevens Lumber Co.	1919-20	1920	Original plat
44	Stevens Lumber Co.	1920-21	1921	Original plat
45	Stevens Lumber Co.	1921-22	1922	Original plat
46	Stevens Lumber Co.	1922-23	1923	Original plat
47	Stevens Lumber Co.	1923-24	1924	Original plat
48	Stevens Lumber Co.	1924-25	1925	Original plat
49	Stevens Lumber Co.	1925-26	1926	Original plat
50	Stevens Lumber Co.	1926-27	1927	Original plat
51	Stevens Lumber Co.	1927-28	1928	Original plat
52	Stevens Lumber Co.	1928-29	1929	Original plat
53	Stevens Lumber Co.	1929-30	1930	Original plat
54	Stevens Lumber Co.	1930-31	1931	Original plat
55	Stevens Lumber Co.	1931-32	1932	Original plat
56	Stevens Lumber Co.	1932-33	1933	Original plat
57	Stevens Lumber Co.	1933-34	1934	Original plat
58	Stevens Lumber Co.	1934-35	1935	Original plat
59	Stevens Lumber Co.	1935-36	1936	Original plat
60	Stevens Lumber Co.	1936-37	1937	Original plat
61	Stevens Lumber Co.	1937-38	1938	Original plat
62	Stevens Lumber Co.	1938-39	1939	Original plat
63	Stevens Lumber Co.	1939-40	1940	Original plat
64	Stevens Lumber Co.	1940-41	1941	Original plat
65	Stevens Lumber Co.	1941-42	1942	Original plat
66	Stevens Lumber Co.	1942-43	1943	Original plat
67	Stevens Lumber Co.	1943-44	1944	Original plat
68	Stevens Lumber Co.	1944-45	1945	Original plat
69	Stevens Lumber Co.	1945-46	1946	Original plat
70	Stevens Lumber Co.	1946-47	1947	Original plat
71	Stevens Lumber Co.	1947-48	1948	Original plat
72	Stevens Lumber Co.	1948-49	1949	Original plat
73	Stevens Lumber Co.	1949-50	1950	Original plat
74	Stevens Lumber Co.	1950-51	1951	Original plat
75	Stevens Lumber Co.	1951-52	1952	Original plat
76	Stevens Lumber Co.	1952-53	1953	Original plat
77	Stevens Lumber Co.	1953-54	1954	Original plat
78	Stevens Lumber Co.	1954-55	1955	Original plat
79	Stevens Lumber Co.	1955-56	1956	Original plat
80	Stevens Lumber Co.	1956-57	1957	Original plat
81	Stevens Lumber Co.	1957-58	1958	Original plat
82	Stevens Lumber Co.	1958-59	1959	Original plat
83	Stevens Lumber Co.	1959-60	1960	Original plat
84	Stevens Lumber Co.	1960-61	1961	Original plat
85	Stevens Lumber Co.	1961-62	1962	Original plat
86	Stevens Lumber Co.	1962-63	1963	Original plat
87	Stevens Lumber Co.	1963-64	1964	Original plat
88	Stevens Lumber Co.	1964-65	1965	Original plat
89	Stevens Lumber Co.	1965-66	1966	Original plat
90	Stevens Lumber Co.	1966-67	1967	Original plat
91	Stevens Lumber Co.	1967-68	1968	Original plat
92	Stevens Lumber Co.	1968-69	1969	Original plat
93	Stevens Lumber Co.	1969-70	1970	Original plat
94	Stevens Lumber Co.	1970-71	1971	Original plat
95	Stevens Lumber Co.	1971-72	1972	Original plat
96	Stevens Lumber Co.	1972-73	1973	Original plat
97	Stevens Lumber Co.	1973-74	1974	Original plat
98	Stevens Lumber Co.	1974-75	1975	Original plat
99	Stevens Lumber Co.	1975-76	1976	Original plat
100	Stevens Lumber Co.	1976-77	1977	Original plat

STATION MAP TRACKS AND STRUCTURES
 CHICAGO AND NORTH-WESTERN RAILWAY
 OPERATED BY THE
 C. & N. W. RY. CO.
 ASHLAND DIVISION
RHINELANDER, WIS.
 STA. 000MILE SPUR TO STA. NORTHLINE MILL LOT F
 SCALE: 1 IN. = 100 FT.
 OFFICE OF CHIEF ENGINEER
 CHICAGO, ILL.