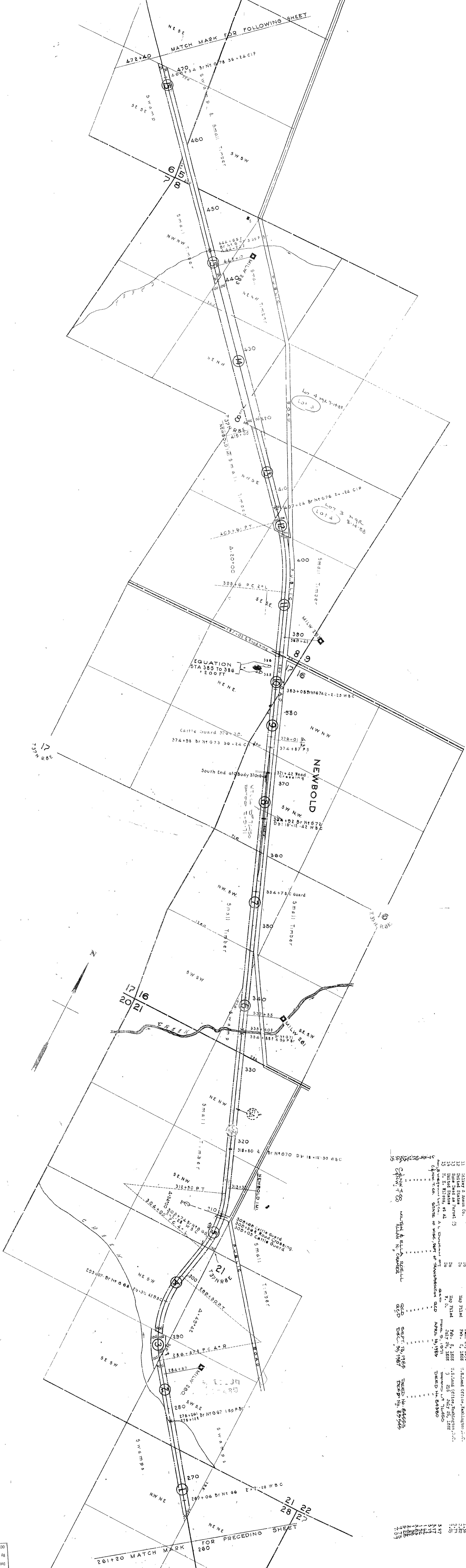


Plotted by R.S. Oct. 10, 1916
 Read by B.N.O. Nov. 1, 1916
 Checked by R.F.S. Nov. 16, 1916



NO.	SECTION	SECTION	INSTRUMENT	D.A.T.E.	BOOK	PAGE	RECORD	RECORD	AREA
1	A. L. Cary	12287 Ry. Co.	Q.C.R.	Oct. 15, 1887	102	127	102	127	2.25
2	A. C. Posters, et al.	12287 Ry. Co.	Map Filed	Feb. 5, 1888	117	127	117	127	1.25
3	Same Deed as Parcel #2	12287 Ry. Co.	Map Filed	Feb. 5, 1888	117	127	117	127	1.25
4	Wisconsin River Land Co.	12287 Ry. Co.	Q.C.R.	Jan. 15, 1890	1	30	1	30	1.27
5	A. L. Cary	12287 Ry. Co.	Q.C.R.	Oct. 15, 1887	102	127	102	127	1.25
6	Same Deed as Parcel #1	12287 Ry. Co.	Map Filed	Feb. 5, 1888	117	127	117	127	1.25
7	Same Deed as Parcel #1	12287 Ry. Co.	Map Filed	Feb. 5, 1888	117	127	117	127	1.25
8	Same Deed as Parcel #1	12287 Ry. Co.	Map Filed	Feb. 5, 1888	117	127	117	127	1.25
9	Same Deed as Parcel #1	12287 Ry. Co.	Map Filed	Feb. 5, 1888	117	127	117	127	1.25
10	Oliver & Mann Co.	12287 Ry. Co.	Q.C.R.	Jan. 24, 1890	1	122	1	122	1.25
11	United States	12287 Ry. Co.	Map Filed	Feb. 5, 1888	117	127	117	127	1.25
12	United States	12287 Ry. Co.	Map Filed	Feb. 5, 1888	117	127	117	127	1.25
13	Same Deed as Parcel #5	12287 Ry. Co.	Map Filed	Feb. 5, 1888	117	127	117	127	1.25
14	United States	12287 Ry. Co.	Map Filed	Feb. 5, 1888	117	127	117	127	1.25
15	Chicago & North-Western Ry. Co.	12287 Ry. Co.	Q.C.R.	Apr. 10, 1916	1	127	1	127	1.25

RIGHT OF WAY AND TRACK MAP
CHICAGO AND NORTH-WESTERN RAILWAY
 OPERATED BY THE
C. & N-W. RY. CO.
 ASHLAND DIVISION
MONICO, WIS. TO HURLEY, WIS.

Sheet No. 6 of C. & N.W. RY.
 from Survey Station 201
 to Survey Station 260
 Valuation Engineer
 STA. 201 TO STA. 260
 SCALE 1-IN. = 400 FT.
 OFFICE OF CHIEF ENGINEER
 CHICAGO, ILL. JUNE 30, 1917.

RECEIVED & FILED
 In Office of the
 County Surveyor
 of Ashland County, Wis.
 Date
 1917
 1917

