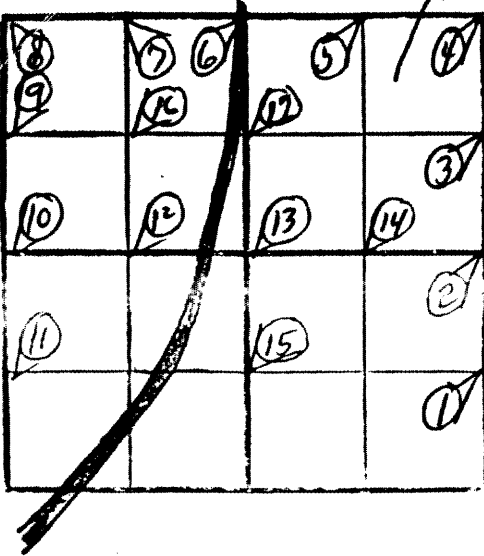


SEC. 8 T. 38 N. R. 9 E W



① E 1/4 SE 1/4 Tom. 10" E - 0.025
 (Done 2/14/93) at 19.925 set 3/4" I.P. property
 Dows 18 ln., his stump good. New B.T. SB 5" -
 N29°E - 22 ch; SB 6" - N62°W - 21 ch (Permit 1057)

② E 1/4 Sec 8

③ E 1/4 NE 1/4

RECEIVED & FILED # 790
 Oneida County Surveyor's Office
 Date: APR 22 1993
 Book 7
 OCS Area #

57904

④ NE Cor. Sec 8

⑤ N¹/₄ NE¹/₄ at 20.60 ~~Ham. 20"~~ Ham. 20" - ~~S 54° 41' W~~ S 41° W - 0.290 (Dover 2/14/03)

⑥ N¹/₄ Sec 8 at 41.74 west of orig NW Cor. found orig N¹/₄ Cor. (Vaughn 1/19/03)

⑦ N¹/₄ NW¹/₄ at 20.87 48 Cor. fence 12" - N 84° E - 11 lh; Tam 12" - S 11° W
10 lh. (Vaughn 1/19/03)

⑧ NW Cor. Sec. 8 at 39.94 north of orig. W 1/4 cor

found O.B.T. Bench OK, source gone. Mem. 10" - 364°E - 15 (Vaughn 1/19/03)
NW cor is 41.74 west of orig. N 1/4 cor. (Vaughn 1/19/03)

⑨ W 1/4 NW 1/4 at 19.92 found Dorro post OK. New BT Bench 11" - N33°W -
0.105 ch.; Cedar 10" - S6°W - 0.095 (Vaughn 1/19/03)

⑩ W 1/4 Sec 8 found post of orig. trees. Ran north on Dorro random. at 19.92
found Dorro 18 34 1/2 west of random. & no bearings but post is marked 1/8. at 39.9
fell 75 east of NW Cor. (Vaughn 1/19/03)

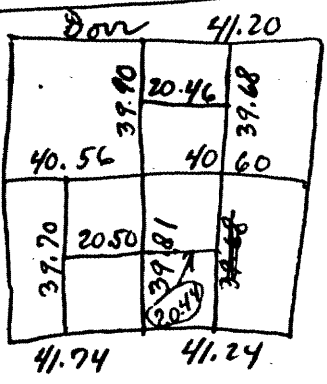
17807

⑪ W 1/4 SW 1/4

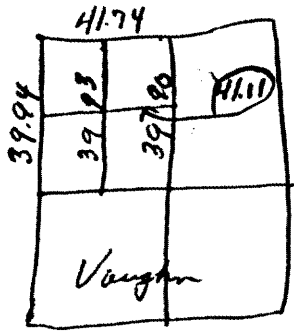
RECEIVED & FILED	47904
Orinda County Surveyor's Office	
Date	APR 22 1988
By	S. J.
OCS Area #	

⑫ N¹/₄ SW¹/₄ Hem. 8" - N16°W - 0.12347 (Don 2/14/93)

⑬ ctr. Sec 8



Pine 20" - S21°W - 0.257 (Don 2/14/93) at 39.90 south
of N¹/₄ cor fell 35 1/2 east of Dorro ctr.
His BT. PW 20" - S11°W - 10; Hem. 12" -
N16°W - 0.237 ch. (Vaughn 1/19/03)



⑭ N¹/₄ SE¹/₄ ~~Cedar 12" - N88°W - 0.085 ch. (Don 2/14/93)~~ Tom. 11" -
N3°E - ~~0.177~~ 0.177 (Don 2/14/93)

⑮ W¹/₄ SE¹/₄ Cedar 12" - N88°W - 0.085 ch. (Don 2/14/93)

8-38-9

⑥ Ch. NW 1/4 at 18 post west of Ch. set by Don son Noah
39.93 & fell 39.6 ch east of 1/8 post set by Don. Set 1/16 post Cedar N⁴-N36^oE
0.195 ch; Cedar 8"-S 7^oW-0.225 ch. (Vaughn 1/19/03)

⑦ W 1/4 NE 1/4 at 19.95 set 1/8 post. Birch 11"-N 21^oE-21 ch; Birch 12"-
S 1^oW-0.142 ch. (Vaughn 1/19/03)