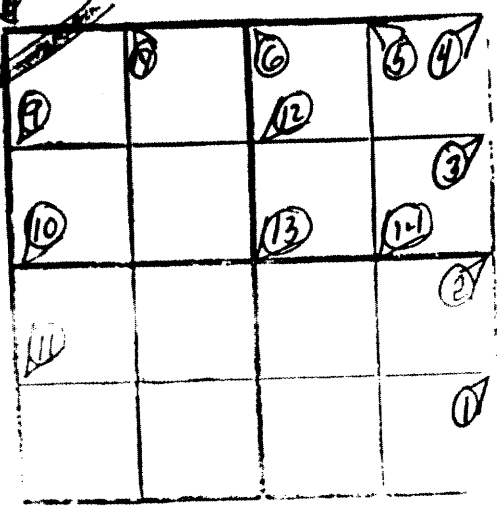


SEC. 17 T. 38 N. R. 9 W.

① E 1/4 SE 1/4 at 18.862 set 3/4" I.P. in
open swamps. SB 4" - N35° E - 496 d.
(Bennett 11/12/57)



② E 1/4 Sec 17 Spruce 4" - S81° W - 12; 2 in 8" - N56° W - 0.277 d. (Door 11/31/03)
at 37.726 lock way set W.C.D. pipe. aspen 7" - N39° W - 51; BW 7" -
N3° W - 62 (Bennett 11/12/57)

RECEIVED & FILED	4791
Florida County Surveyor's Office	
Date	APR 22 1988
By	[Signature]
OCS Area #	

③ E 1/4 NE 1/4 at 18.862 ~~set 3/4" I.P. Cedar 8" -~~
N32° W - 8; Cedar 12" - S39° W - 28 (Bennett 11/12/57)

FILE

~~NE~~ NE Cor. Sec. 17 Howard O.B.T. - 10m 10" - N 67° W - 27 y point
Long post. Set to a c.d. type. SB 7" - N 43° E - 10; SB 4" - N 42° W - 27
tam. 5" - S 77° W - 11 (Berndt 10/18/57)

⑤ N¹/₄ NE¹/₄ at 20.62 tam. 5" - N 59° E - 14 (Dour 2/14/93)

⑥ N¹/₄ Sec 17 at 41.⁴⁷~~47~~ east of NW Cor & 41.24 west of NE Cor (Dour 1/31/93)

⑦ N¹/₄ NW¹/₄ ---

③ NW Cor. Sec 17

④ W¹/₄ NW¹/₄ at 20.05 Map 6" - N77° E - 0.212 (Don 11/31/93)

(501511 - 1A)

⑤ W¹/₄ Sec 17

RECEIVED & FILED	L791
Oil & Gas Surveyors Office	
Date	APR 22 1998
By	S. J. J.
OOB Area #	

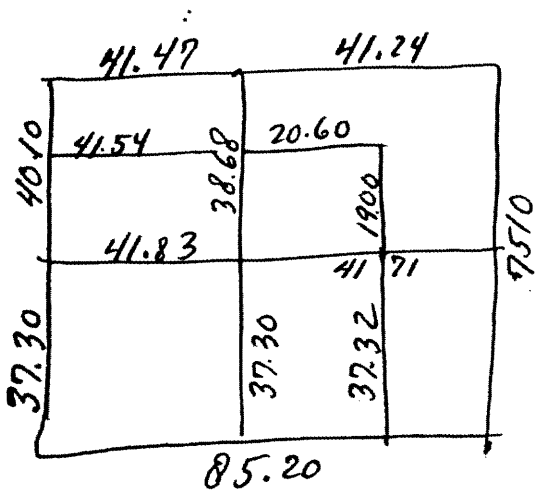
L791

⑥ W¹/₄ SW¹/₄ at 18.65 MH 10" - S19° W - 0.162 ch (Don 12/22/92)
Stem. 16" - N89° W - 0.165 (Don 11/31/93)

② W 1/4 NE 1/4 Pond 12" - S 11° E - 0.205 (Dorr 1/31/93)

③ Ch. Sec 17

Spring 4" - S 17° E - 14; Pond 5" - N 19° E - 0.185
(Dorr 1/31/93)



④ N 1/4 SE 1/4 Pond 22" - N 36° W - 17 (Dorr 1/31/93)