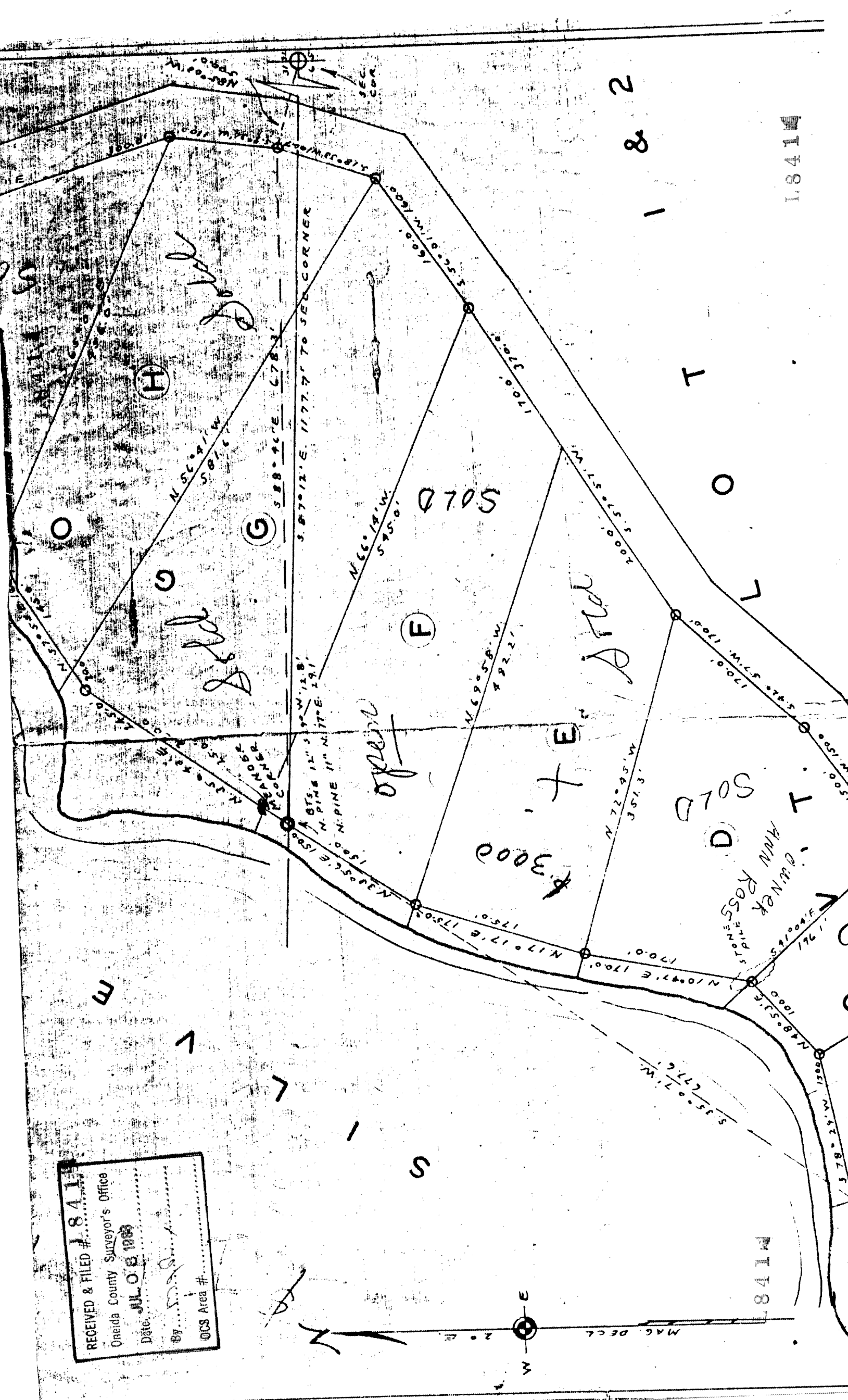


RECEIVED & FILED # **L 841**
 Oneida County Surveyor's Office
 Date: **JUL 08 1888**
 By: *[Signature]*
 OCS Area #



L 841

L 841

2
8
1

T
O
L

SOLD
 ANN ROSSETT
 ATTORNEY AT LAW

SOLD

3000

open

part

(H)

(G)

(F)

L 841

MAG. DECL. 2.0 E.

