

1892

1892

SURVEY FOR JOINT SCHOOL DISTRICT # 1

RHINELANDER WISCONSIN

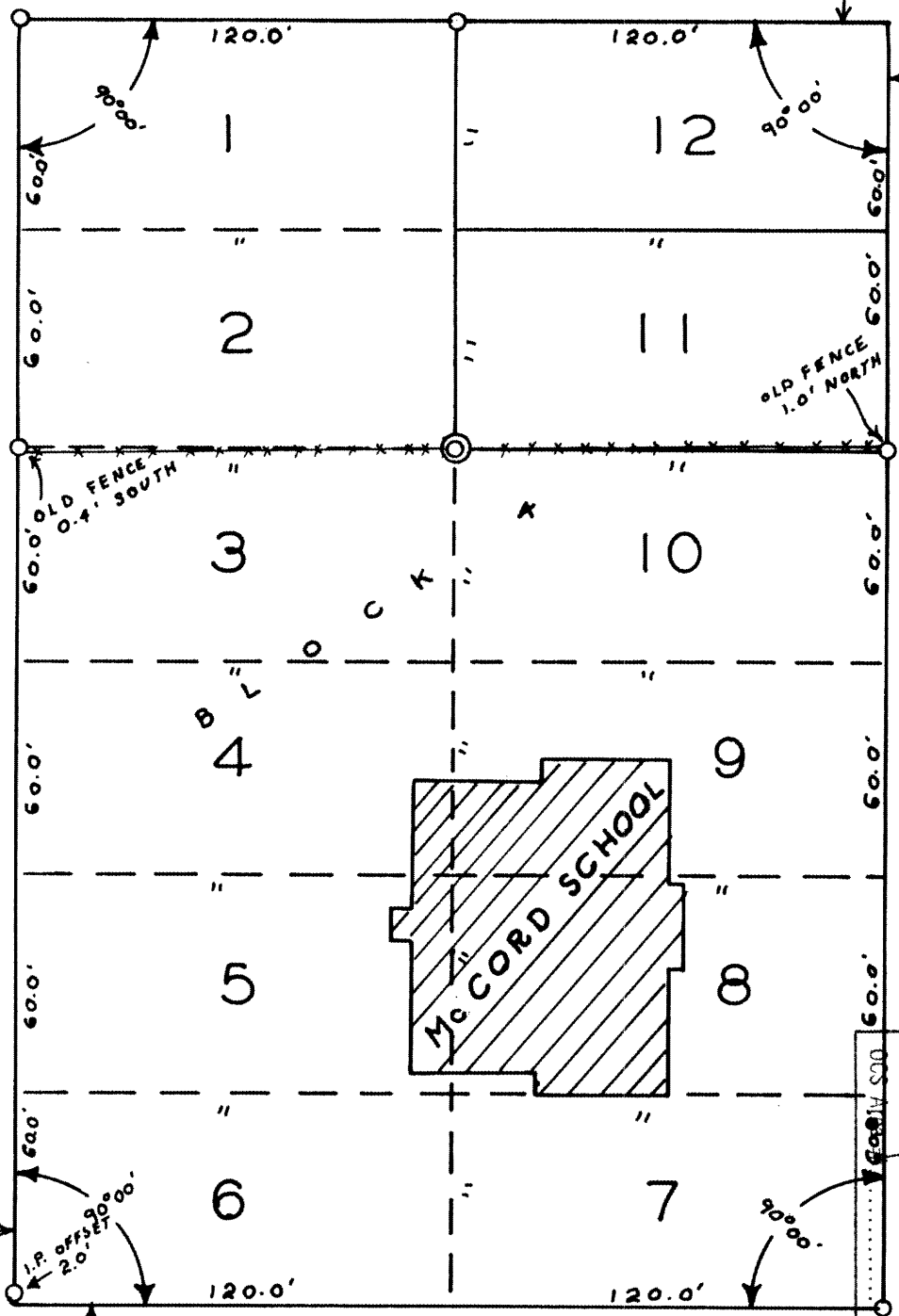
OF LOTS 1-10, BLOCK 4
S. H. ALBAN'S ADDITION

MADISON ST.

THAYER ST.

MASON ST.

FREMONT ST.

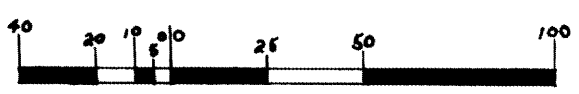


RECEIVED & FILED # 1892
 Oneida County Surveyor's Office
 DATE: JUL 01 1968
 By: M. R.

○ 1" I.D. X 30" IRON PIPE
 ◎ 2" I.D. X 36" IRON PIPE
 π SY M. POSKIE
 ∅ JAMES POSKIE

DATED: 8-5-'63

Sy. M. Poskie
WIS. # 5-140



SCALE: 1" = 50'