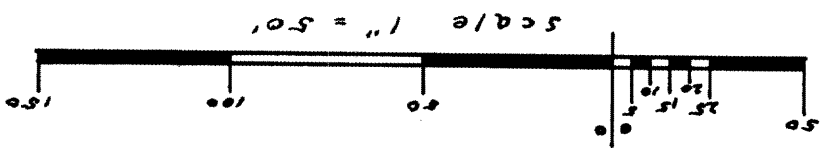
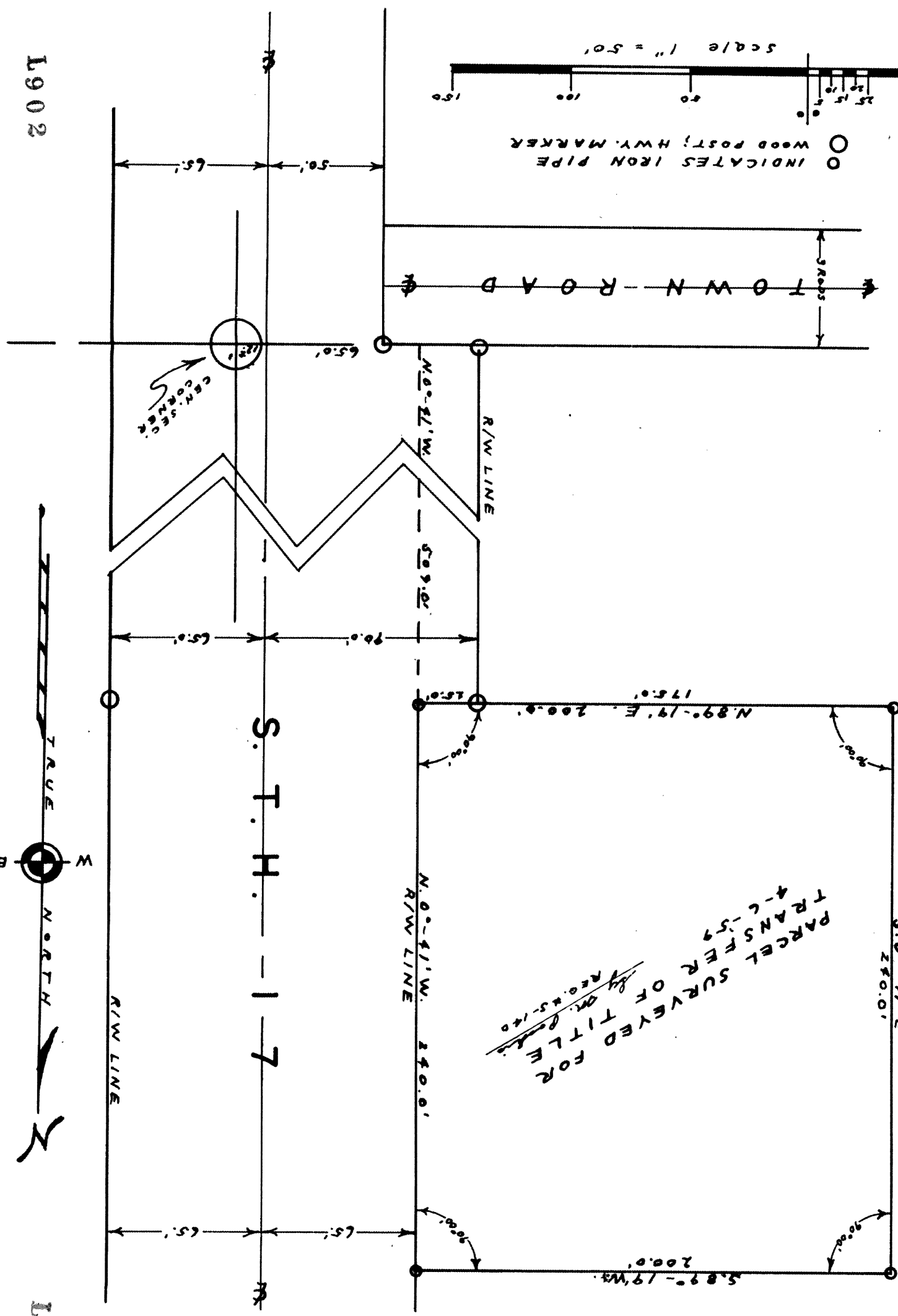


L902



INDICATES IRON PIPE
WOOD POST; HWY. MARKER



PARCEL SURVEYED FOR
TRANSFER OF TITLE
By *M.R.*
4-C-59
REG. 5-140

SURVEY
FOR
FLOYD RHODE
IN
SE 1/4 - NW 1/4, SEC. 23, T 38 N. R 9 E.
ONEIDA COUNTY, WISCONSIN.

RECEIVED & FILED #. **L902**
Oneida County Surveyor's Office
Date: **JUL 0 1 1988**
By: *M.R.*
OCS Area #.....

L902

L902