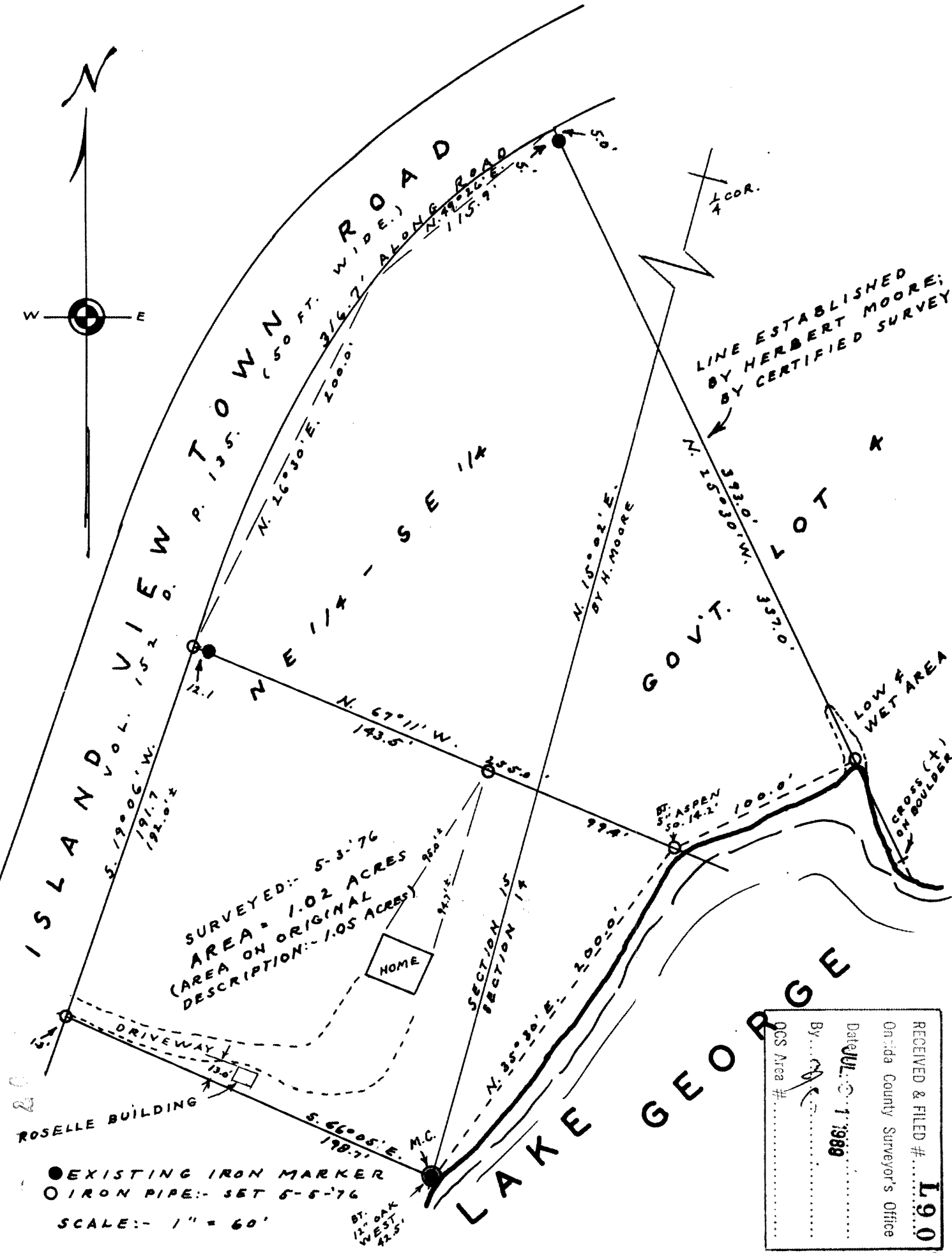


SURVEY FOR ROBERT R. NEWCOMB

IN
GOV'T. LOT 7, 1/4 NE 1/4 - SE 1/4, SECTION 15, 4 IN
GOV'T. LOT 4, SECTION 14, T. 36 N., R. 9 E.,
ONEIDA COUNTY, WISCONSIN.

1907

035



RECEIVED & FILED # **1907**
 Oneida County Surveyor's Office
 Dated **JUL 1 1988**
 By *[Signature]*
 OCS Area #

DATED: 5-5-1976
 REVISED: AREA ADDED: 6-20-1978

Sy. M. Poshie
 WIS: NO. 5-140