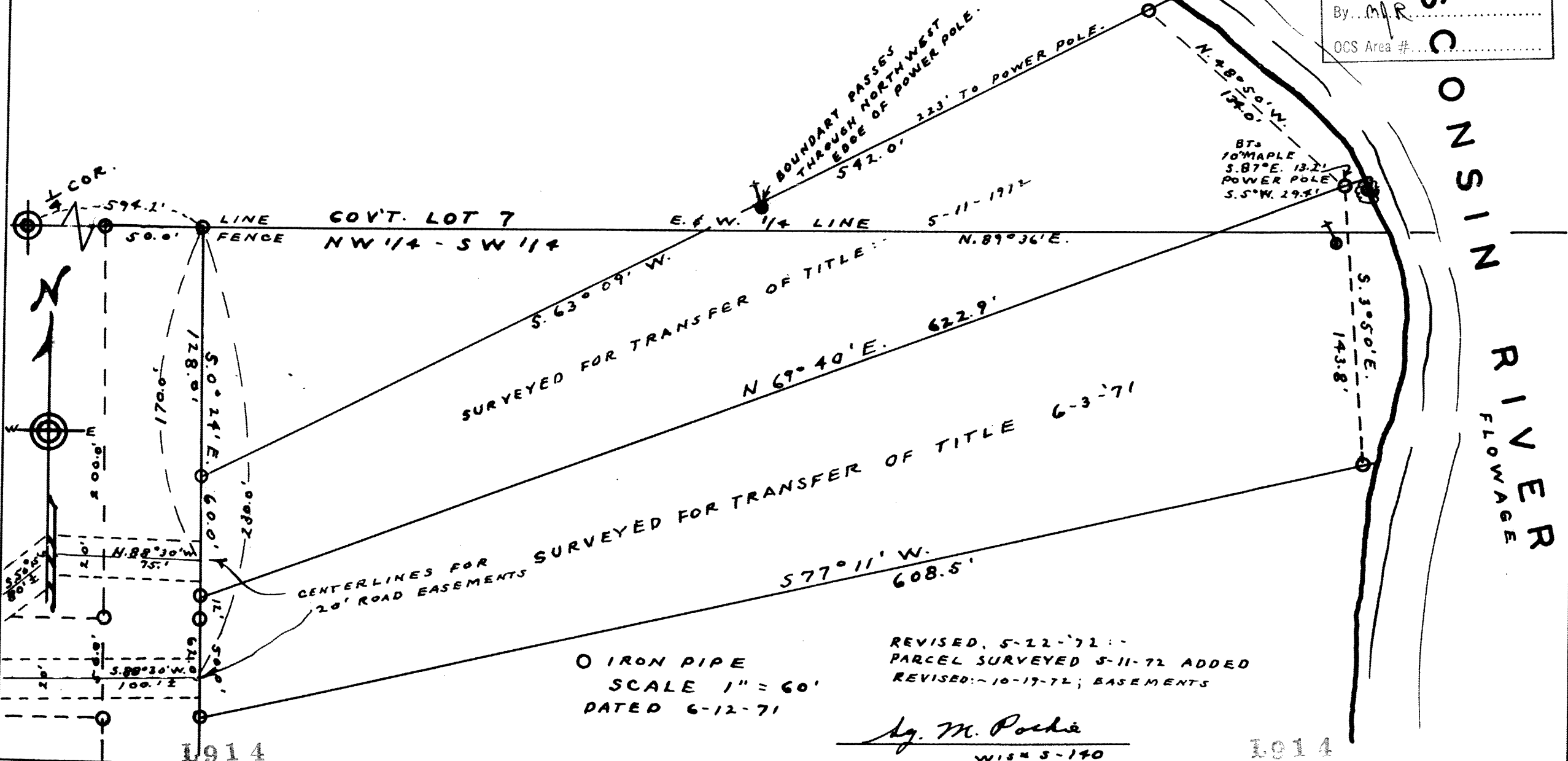


L914

SURVEY FOR R. E. LARSEN

NW 1/4 - SW 1/4 & GOV'T. LOT 7, SEC. 36, T. 37N., R. 8E.
ONEIDA COUNTY, WISCONSIN.

RECEIVED & FILED # **L914**
 Oneida County Surveyor's Office
 Date **JUL 01 1969**
 By **M. R.**
 OCS Area #



○ IRON PIPE
 SCALE 1" = 60'
 DATED 6-12-71

REVISED, 5-22-71 :-
 PARCEL SURVEYED 5-11-72 ADDED
 REVISED: ~ 10-19-72; EASEMENTS

M. Poskie
 WIS 5-140

L914

L914