

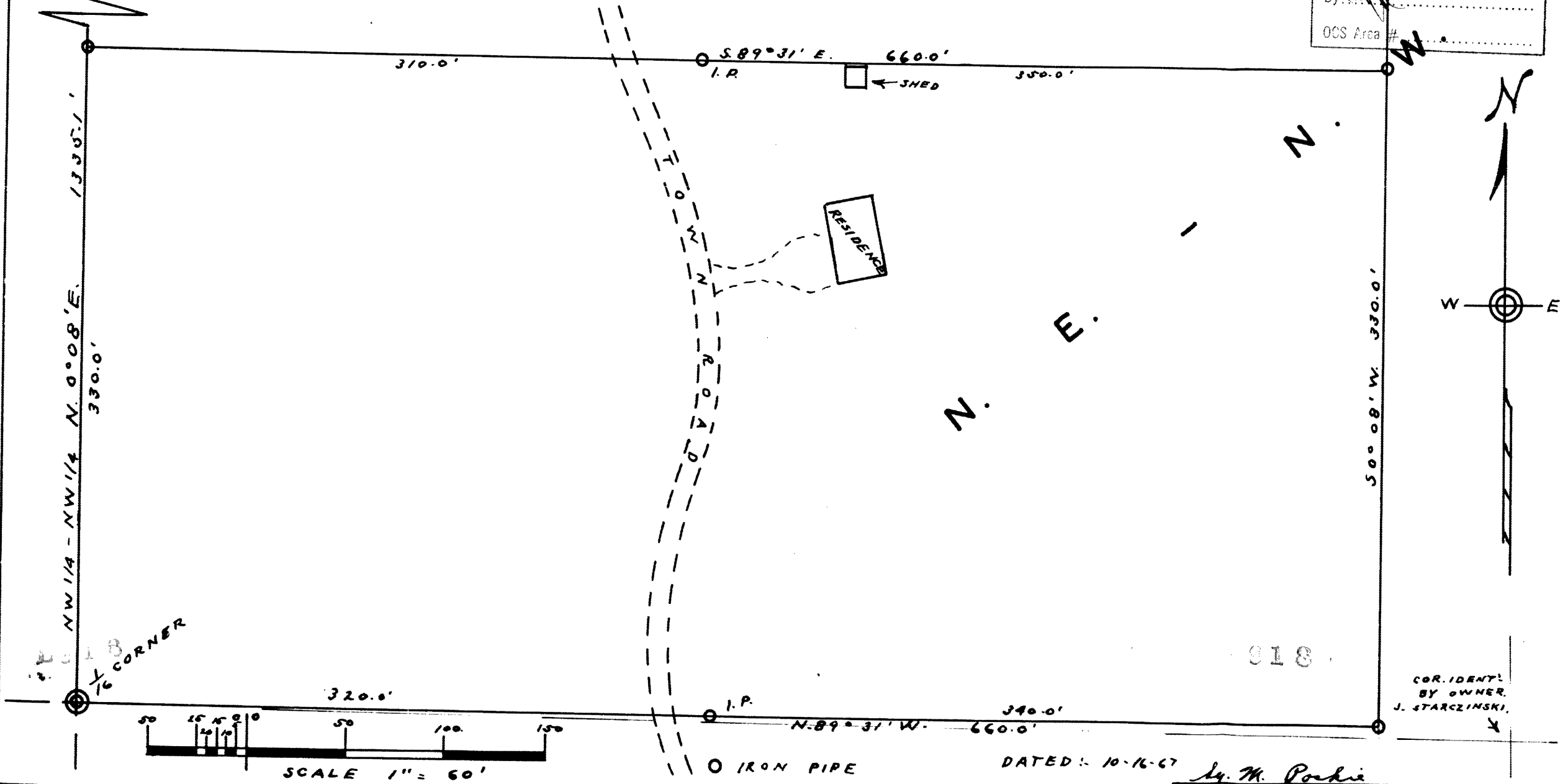
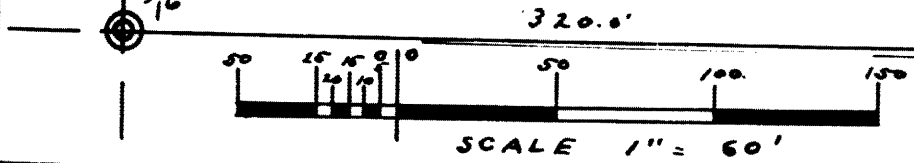
# SURVEY FOR DENIS LADDUSIRE

IN  
WEST 1/2 - NE 1/4 - NW 1/4, SEC. 23, T. 36 N., R. 9 E.,  
ONEIDA COUNTY, WISCONSIN.

RECEIVED & FILED # **L918**  
 Oneida County Surveyor's Office  
 Date **JUL 01 1989**  
 By *[Signature]*  
 OCS Area # \_\_\_\_\_

**L918**  
 SECTION LINE  
 S. 89° 31' E.  
 1005.1' 1/8 CORNER

NW 1/4 - NW 1/4 N. 0° 08' E.  
 1338.1' 330.0' 1/16 CORNER



COR. IDENT.  
 BY OWNER  
 J. STARCZINSKI

DATED: 10-16-67 *J. M. Poehle*  
 WIS. 25-160