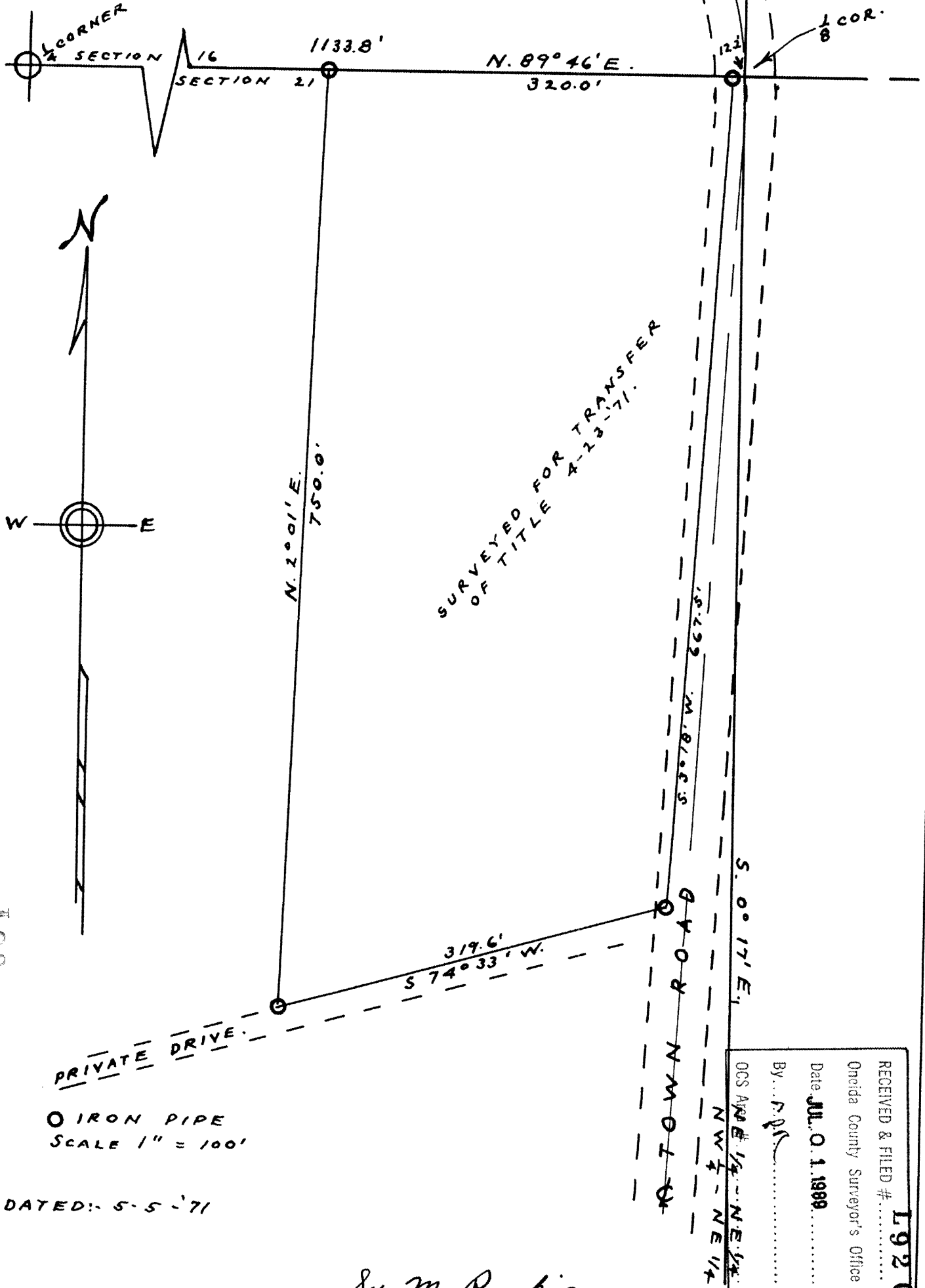


SURVEY FOR WALTER E. JOHNSON

IN
NW 1/4 - NE 1/4, SEC. 21, T. 37 N., R. 9 E.
ONEIDA COUNTY, WISCONSIN.

L920

L920



SURVEYED FOR TRANSFER
OF TITLE
4-23-71.

○ IRON PIPE
SCALE 1" = 100'

DATED: 5-5-71

Sy. M. Poekie

WIS 5-140

RECEIVED & FILED # **L920**
Oneida County Surveyor's Office
Date **JUL. 0. 1. 1989**
By *[Signature]*
OCS ~~APR 14~~ **NE 1/4**
NW 1/4 - NE 1/4