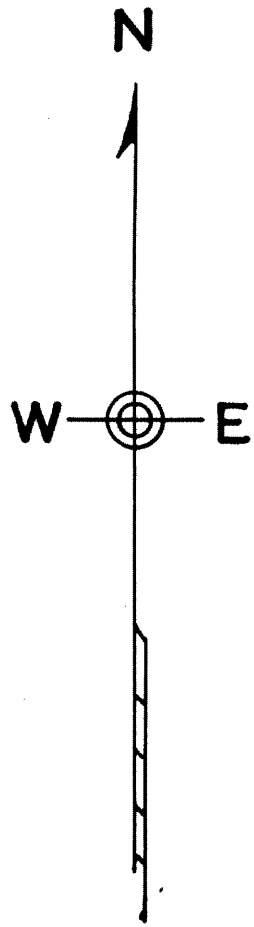
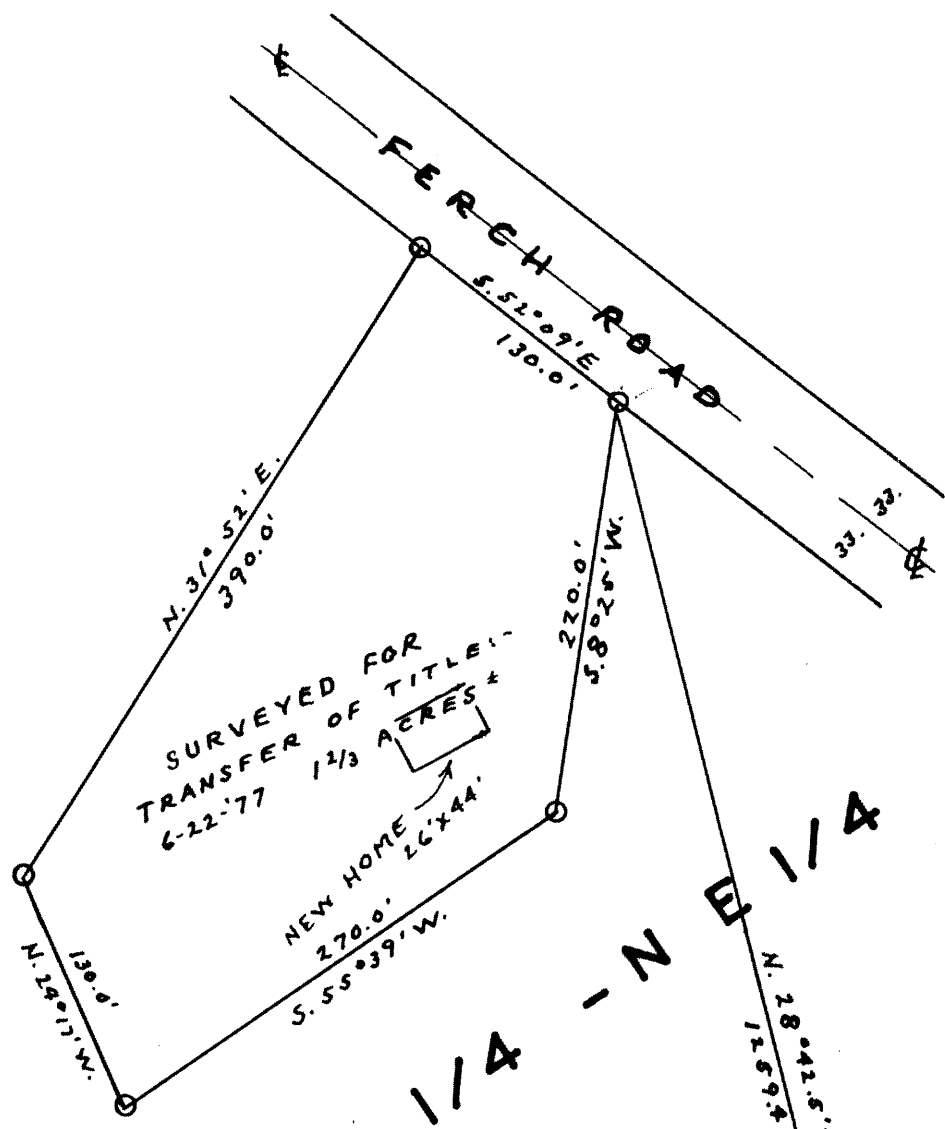


L9233

L9233

SURVEY FOR DONALD L. FERCH

IN
SW 1/4 - NE 1/4, SEC. 36, T. 36 N., R. 9 E.
ONEIDA COUNTY, WISCONSIN.



SW 1/4 - NE 1/4

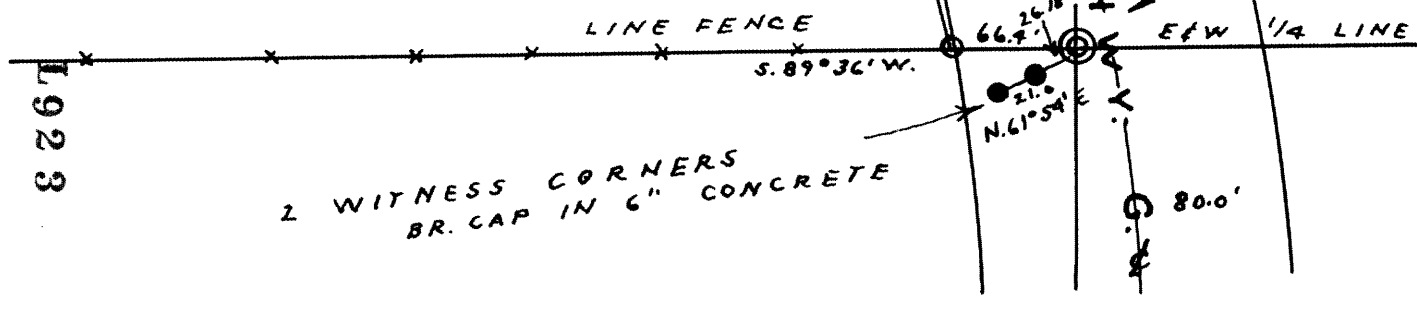
RECEIVED & FILED #... **L9233**
 Onida County Surveyor's Office
 Date: **JUL. 04 1989**
 By: *M.P.*
 OCS Area #

- IRON PIPE
 - WITNESS CORNERS = BR. CAP IN 6" CONCRETE
- SCALE: 1" = 100'

Sy. M. Poskie

WIS# = 5.00140

DATED: 8-25-77



L9233

2 WITNESS CORNERS
BR. CAP IN 6" CONCRETE