

SURVEY

FOR

EDWIN G. DURKEE

LOT 6, BLOCK 13, FIRST ADDITION TO THE VILLAGE, (CITY), OF RHINELANDER; EXCEPTING THE NORTHEAST 50.0 FEET.

60.0'

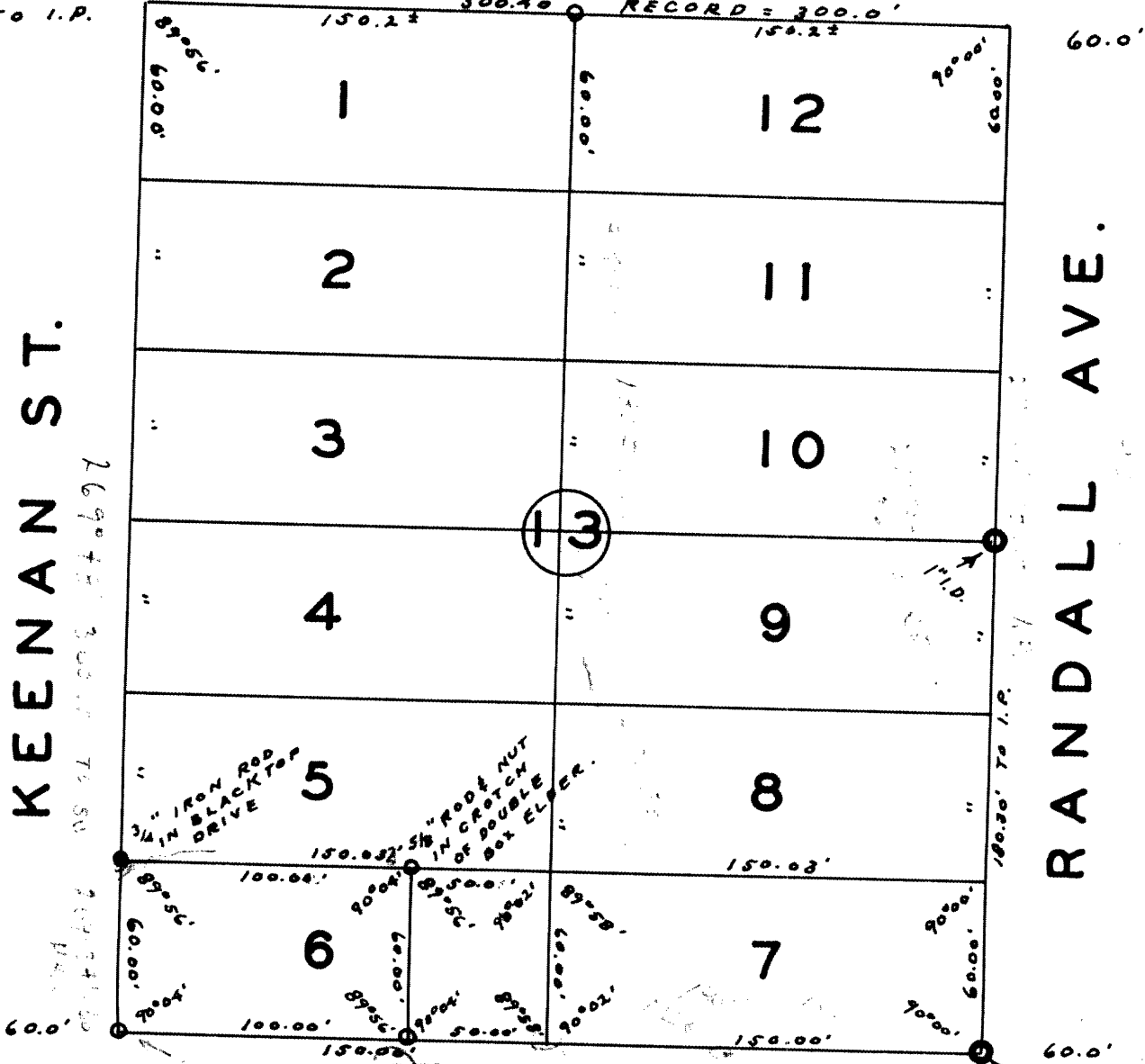
1930

S. PELHAM ST.

As shown on City Record

60.1' TO I.P.

300.40' RECORD = 300.0'



KEENAN ST.

RANDALL AVE.

CONRO ST.

- EXISTING IRON MARKER.
- IRON PIPE SET.

SCALE 1" = 60'

BY ORDER OF: EDWIN G. DURKEE

DATED: - 9-3-'76

Sy. M. Poopie
WIS # 5-140

RECEIVED & FILED # 1930
Onida County Surveyor's Office
Date: JUL 0 1 1989
By: M.S.
DOS Area #

1930