

SURVEY

FOR

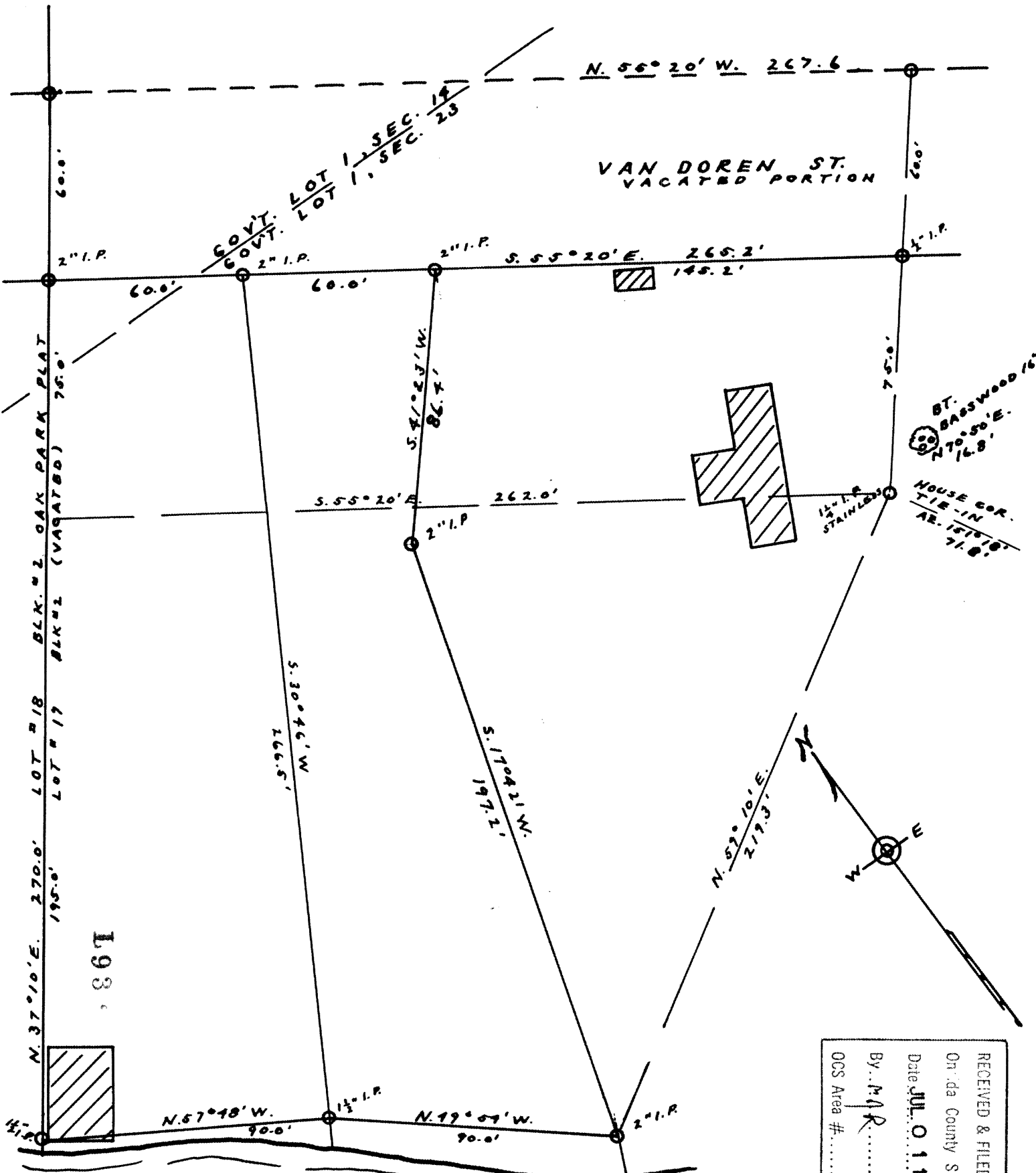
RAY CURTIS

IN

GOV'T. LOT 1, SEC. 14 & GOV'T. LOT 1, SEC. 23, T.35N., R.10E.
BEING A PART OF THE VACATED PORTION OF OAK PARK PLAT,
ONEIDA COUNTY, WISCONSIN.

1932

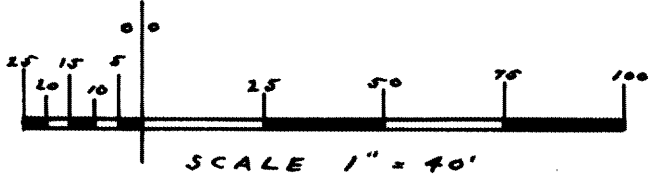
1932



1932

1932

RECEIVED & FILED **1932**
 Oneida County Surveyor's Office
 Date **JUL 01 1938**
 By: *M. R.*
 OCS Area #



DATED 8-9-60
 by *M. Poshie*
 85-190