

L934

# SURVEY FOR ALFERD RINKA

OF  
PART OF GOV'T. LOT 4, SEC. 14, T37N, R8E.  
DESCRIBED IN VOL. 96 D. P. 575.  
ONEIDA COUNTY RECORDS,  
STATE OF WISCONSIN.

L934

W I S C O N S I N R I V E R

APPX. SIGHT  
OF OLD CABIN

N. 84° 43' E.  
315.0'

ORIGINAL BTs  
OLD W. PINE STP.  
S 29 1/2° W. 14.0'  
7" CEDAR STUMP  
S 42° E. 8.9'

N. 11° 07' W.  
69.3'

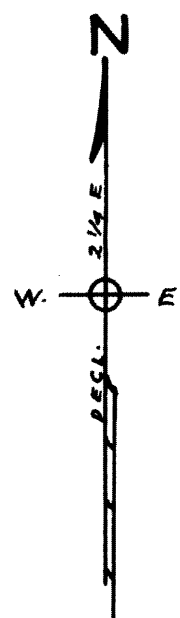
SWAMP

N. 55° 32' W.  
116.8'

S 89° 53' W.  
66.0'

GROWTH OF SPRUCE TREES

S 41° 23' W.  
250.1'



SCALE 1" = 50'  
SURVEYED 5-22-58

N. 00° 0' W.  
1,000.0'

L934

S.W. CORNER  
GOV'T LOT 4

90° 00' E. 867.8'

RECEIVED & FILED #.	L934
Oneida County Surveyor's Office	
Date	MAY 01 1958
By	WAR
OCS Area #	