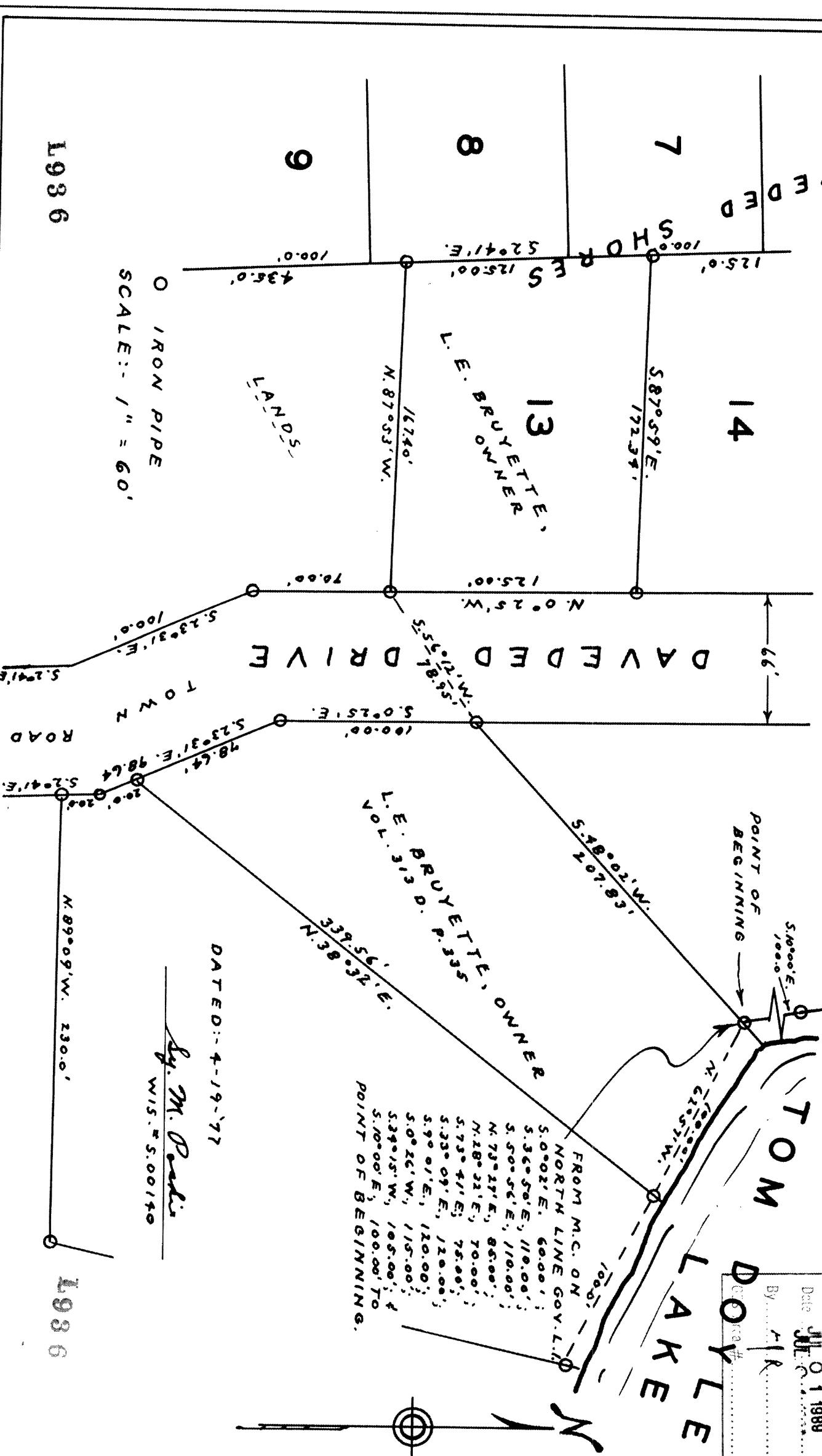


SURVEY FOR LEONARD E. BRUYETTE

IN GOV'T. LOT 1, SECTION 28, T. 38 N., R. 8 E.,
ONEIDA COUNTY, WISCONSIN.

RECEIVED & FILED #... **L936**
 On the County Surveyor's Office
 Date **JUL 01 1988**
 By **AKR**
 Office #.....



FROM M.C. ON
 NORTH LINE GOV. L.L.
 5.0°02'E, 60.00';
 5.36°50'E, 110.00';
 5.50°56'E, 110.00';
 N. 78°27'E, 86.00';
 N. 128°21'E, 70.00';
 5.73°41'E, 75.00';
 5.33°09'E, 120.00';
 5.90°01'E, 120.00';
 5.0°26'W, 115.00';
 5.29°15'W, 105.00';
 5.10°00'E, 100.00' TO
 POINT OF BEGINNING.

DATED: 4-19-77

By M. Paulis
 WIS. # S.00140

○ IRON PIPE
 SCALE: 1" = 60'

L936

L936