

~~L958~~

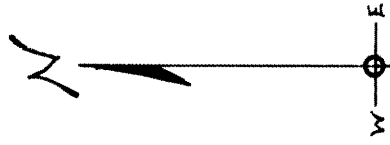
RECEIVED & FILED # ~~L958~~

Oneida County Surveyor's Office

Date: **JUL. 25 1980**

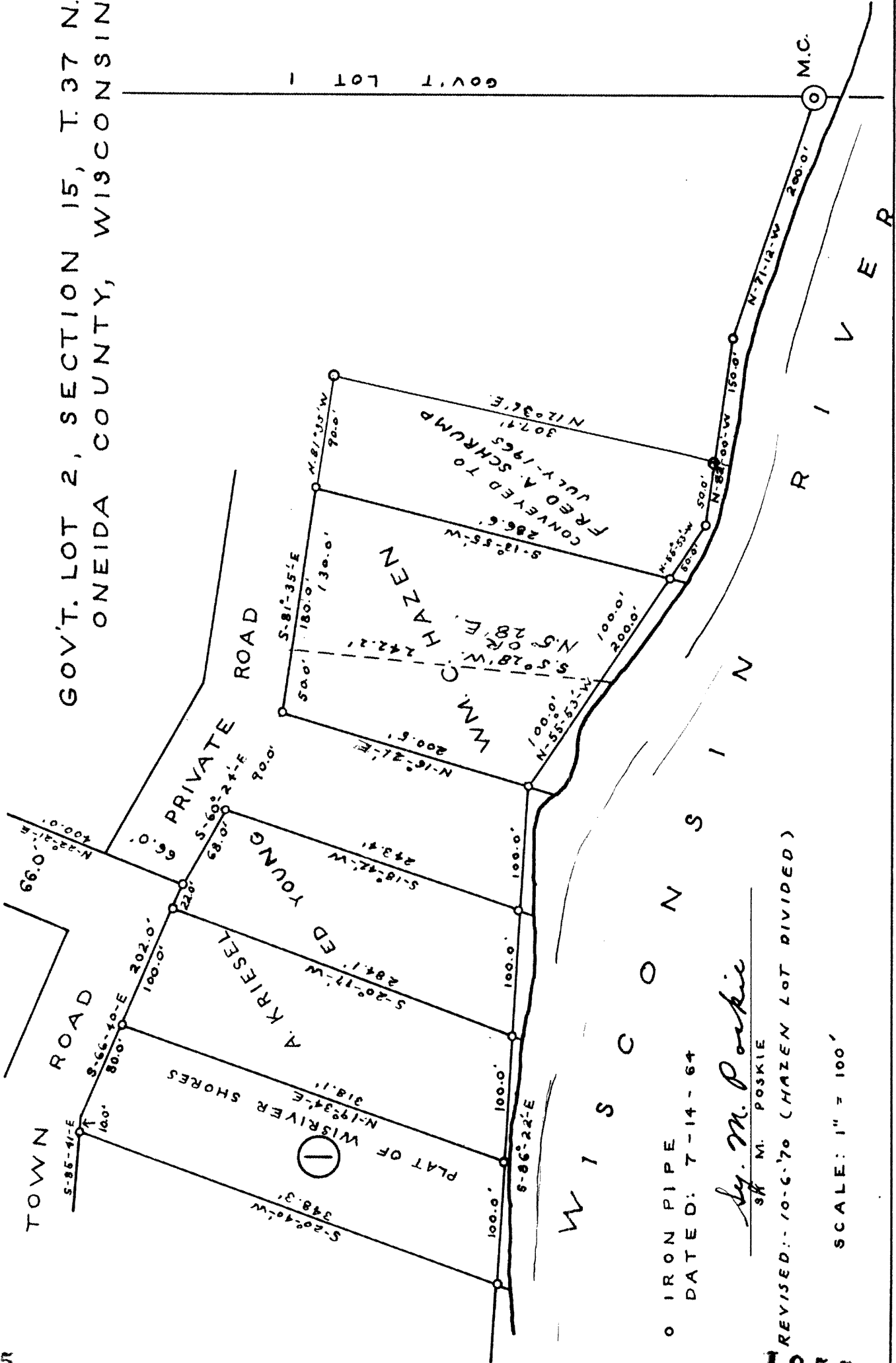
By: *MP*

OCS Area #



SURVEY FOR WM. C. HAZEN

GOV'T. LOT 2, SECTION 15, T. 37 N. R. 8 E.
ONEIDA COUNTY, WISCONSIN



GOV'T LOT 1

M.C.
R I V E R

W I S C O N S I N

○ IRON PIPE
DATED: 7-14-64

Sy. M. Poskie
SR. M. POSKIE

REVISED: 10-6-70 (HAZEN LOT DIVIDED)

SCALE: 1" = 100'