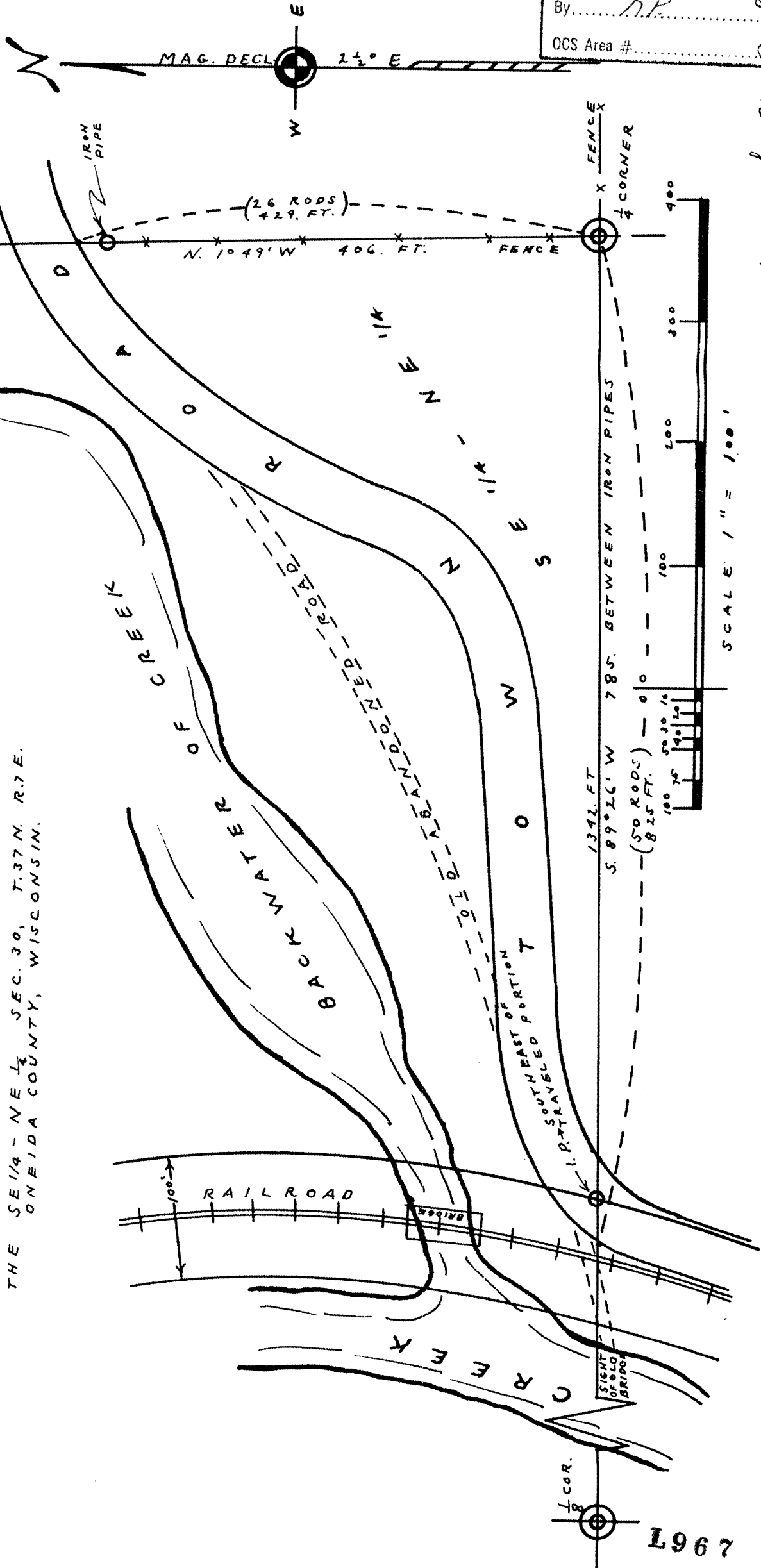


L967

RECEIVED & FILED **L967**  
 Oneida County Surveyor's Office  
 Date **JUL 25 1988**  
 By *RP*  
 OCS Area # \_\_\_\_\_

**SURVEY**  
 FOR  
**EDWIN J. WINNIE**  
 AND  
**RAYMOND B. WINNIE**

IN  
 THE SE 1/4 - ME 1/4 SEC. 30, T. 37 N. R. 7 E.  
 ONEIDA COUNTY, WISCONSIN.



*By M. Poole*  
 DATED 2-18-61

L967

L967