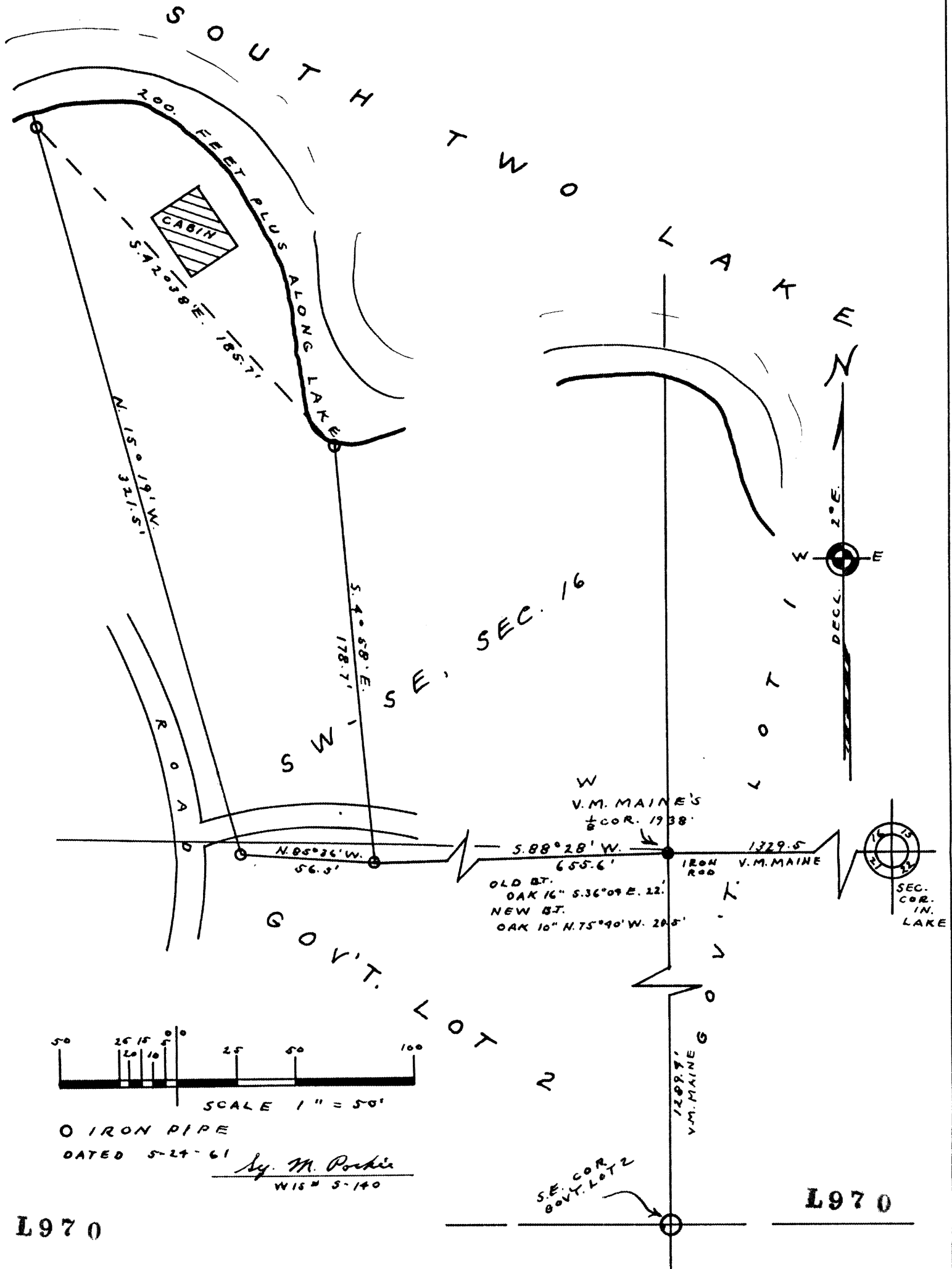


L970

SURVEY FOR ROY ULRICH

IN
GOV'T. LOT 2, SEC. 21, T. 38 N., R. 7 E.
ONEIDA COUNTY, WISCONSIN.
INCLUDING
A PORTION OF SEC. 16, T. 38 N., R. 7 E.

RECEIVED & FILED # **L970**
Oneida County Surveyor's Office
Date: **JUL. 25 1989**
By: *J.P.*
OCS Area #.....



L970

L970