

L972

RECEIVED & FILED # **L97.2**  
 Oneida County Surveyor's Office  
 Date **JUL. 25 1989**  
 By *KP*  
 OCS Area #.....

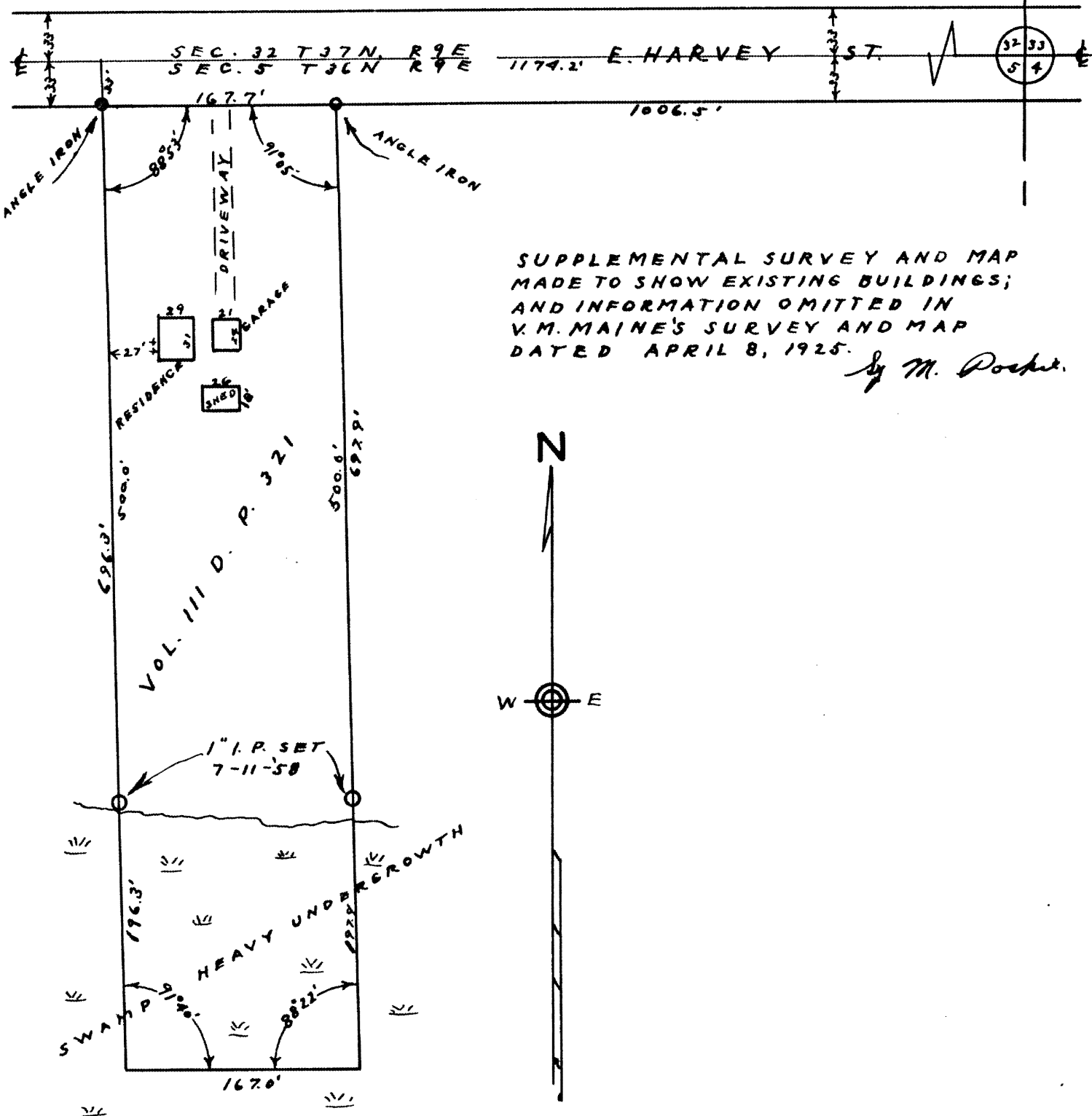
# SURVEY

FOR

## T. J. TAKALA

OF THAT

PART OF THE NE<sup>1</sup>/<sub>4</sub>-NE<sup>1</sup>/<sub>4</sub>; SEC. 5; T36.N; R9E  
 DESCRIBED IN VOL. III DEEDS, PAGE 321;  
 ONEIDA COUNTY, RECORDS



SUPPLEMENTAL SURVEY AND MAP  
 MADE TO SHOW EXISTING BUILDINGS;  
 AND INFORMATION OMITTED IN  
 V.M. MAINE'S SURVEY AND MAP  
 DATED APRIL 8, 1925.  
*By M. Poché.*

SCALE 1" = 100'

L972

L972

July 14, 1958