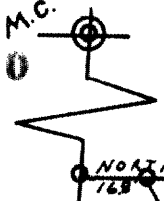


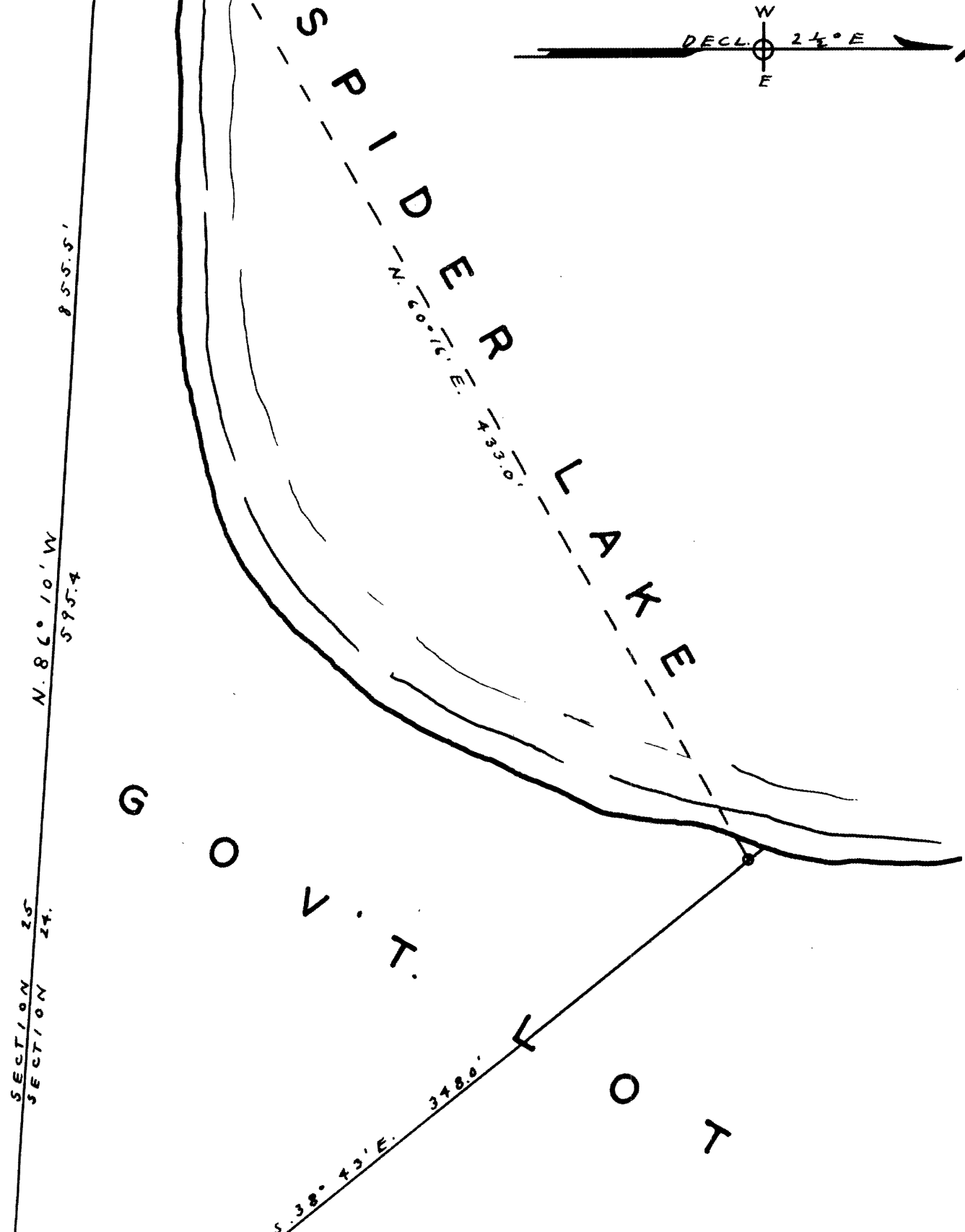
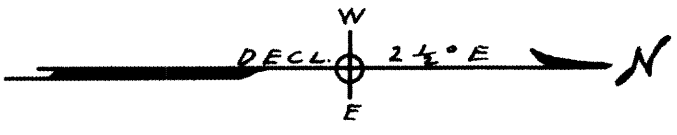
L980



RECEIVED & FILED #.....**L980**
 Oneida County Surveyor's Office
 Date...**JUL 25 1989**
 By... *KP*
 OCS Area #.....

SURVEY
 FOR
ALBERT MORITZ

IN
 GOV'T. LOT 4, SEC. 24, T38N, R8E,
 ONEIDA COUNTY, WISCONSIN.



L980
 1/4 CORNER

BTs. SPR. 8" N70°E 30'
 TAM. 8" N20°W. 23.5'



Scale 1" = 50'

L980

L980

date: 10-2-58