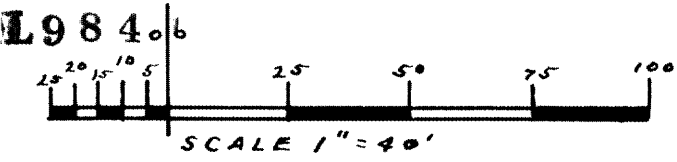
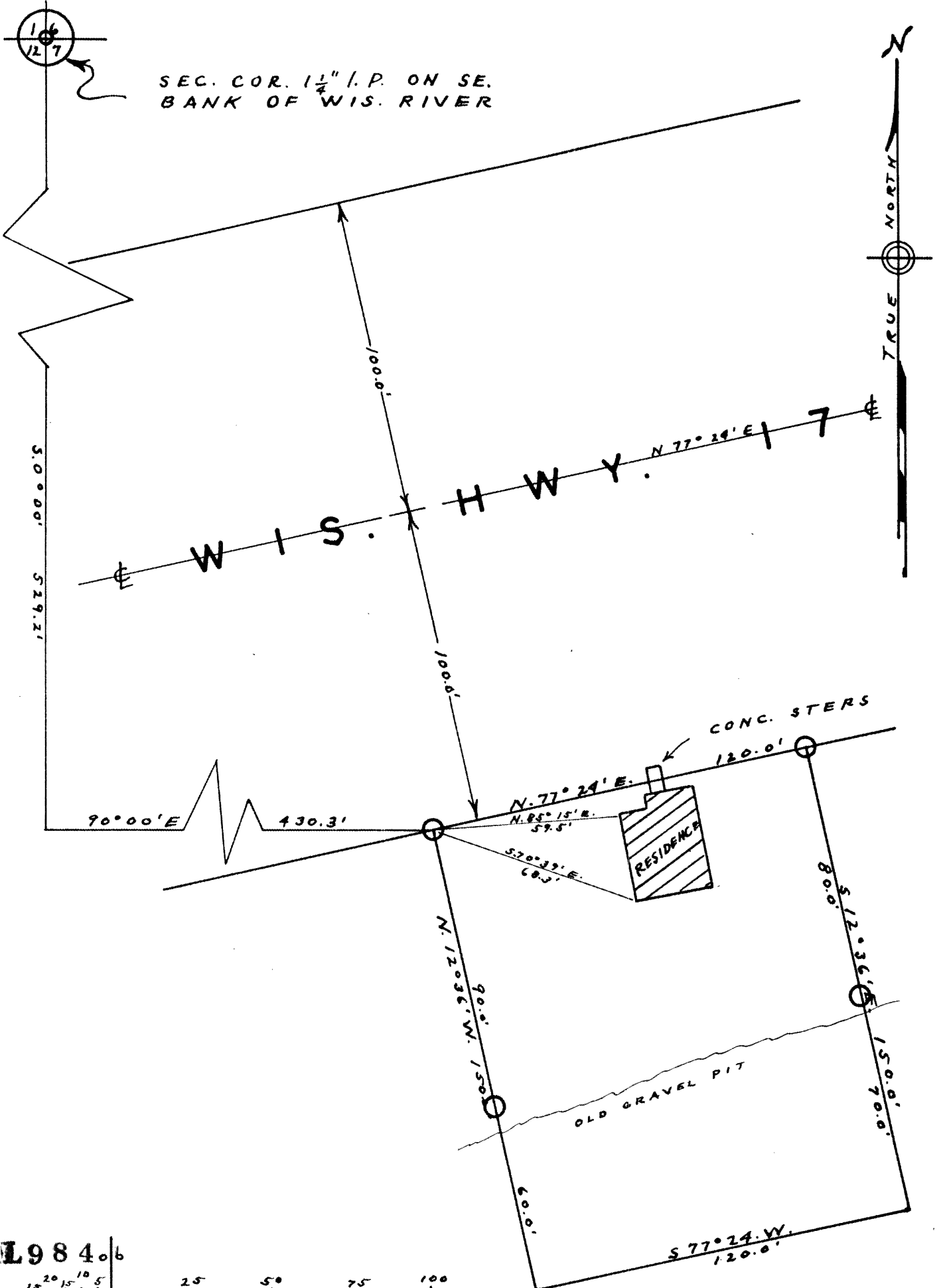


L984

RECEIVED & FILED # **L984**  
 Oneida County Surveyor's Office  
 Date. **JUL 25 1988**  
 By. *K.P.*  
 ACS Area #.....

**SURVEY**  
 FOR  
**EUGENE W. LUNDBERG**  
 OF  
 PART OF GOV'T. LOT 3; SEC. 7, T36N, R9E.



L984

DATED 8-23-58 by M. Poehls