

L985

# SURVEY

FOR

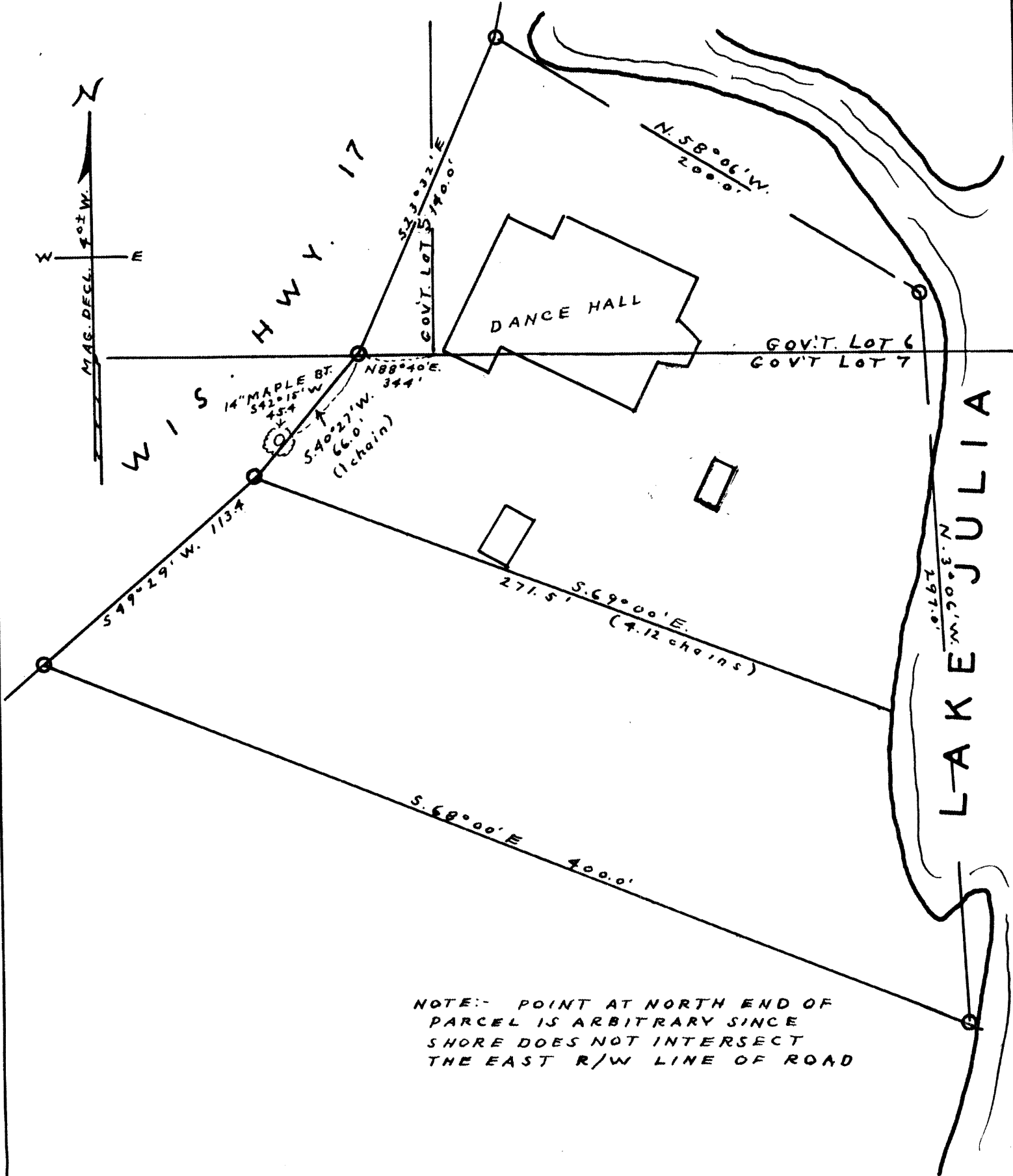
## VINCENT R. DEANY

RECEIVED & FILED # **L985**  
Oneida County Surveyor's Office

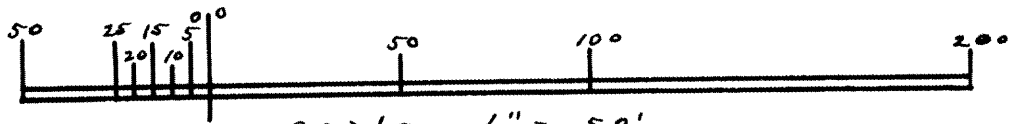
Date: **JUL. 25. 1988**

908 Area, #R.B.E.

GOV'T LOTS 5, 6 & 7; SEC. 12; T. 90N  
OF PARCELS DESCRIBED IN VOLUME 192 D. PAGE 579  
ONEIDA COUNTY RECORDS



NOTE: - POINT AT NORTH END OF  
PARCEL IS ARBITRARY SINCE  
SHORE DOES NOT INTERSECT  
THE EAST R/W LINE OF ROAD



DATED 7-3-88  
By M. Poché

L985

L985